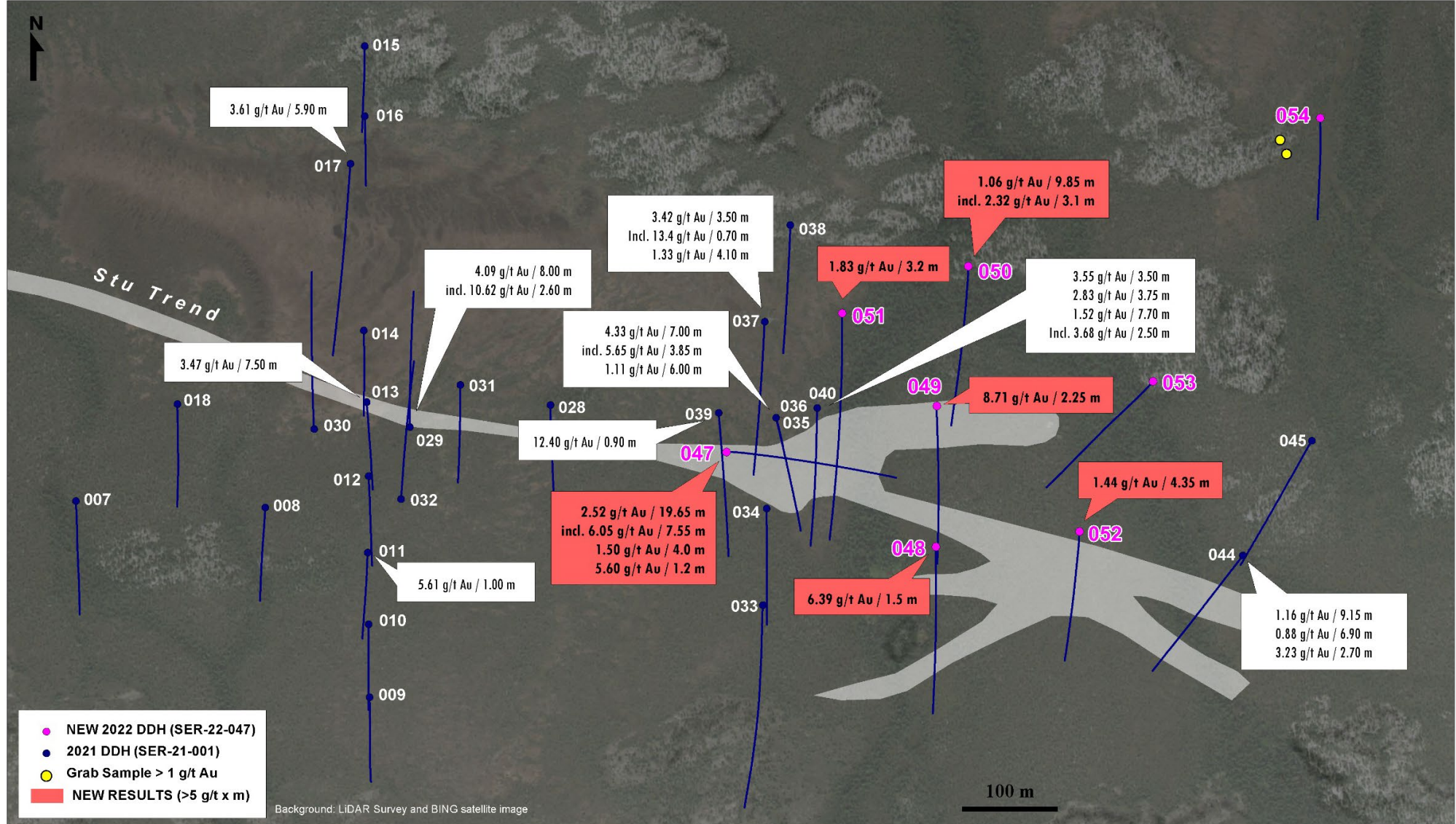


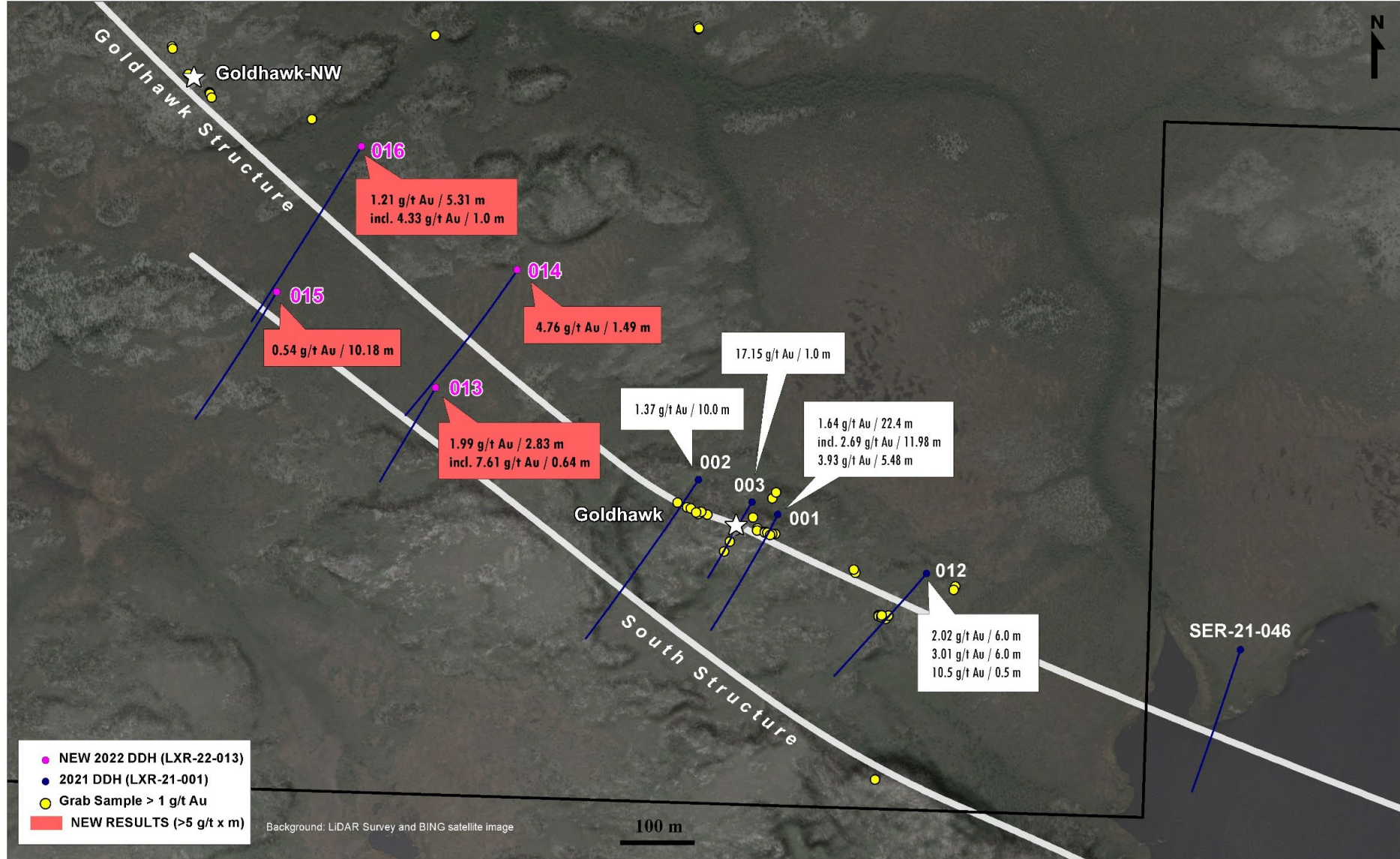
**Figure 1.** Location of all drill holes done on Serpent and Radisson properties in 2021 and 2022. Only gold intervals with a metal factor >5 in 2022 drill holes are shown.





**Figure 2.** Location of drill holes in the eastern half of the swampy area on Serpent showing the extent of the main gold footprint (>50 ppb Au) projected at surface (gray area). This area, striking into a WNW-ESE direction, is referred to as the Stu Trend.





**Figure 3.** Location of drill holes along the Goldhawk Structure on Radisson. Gold intervals are mainly contained into two parallel NW-SE shear zones.