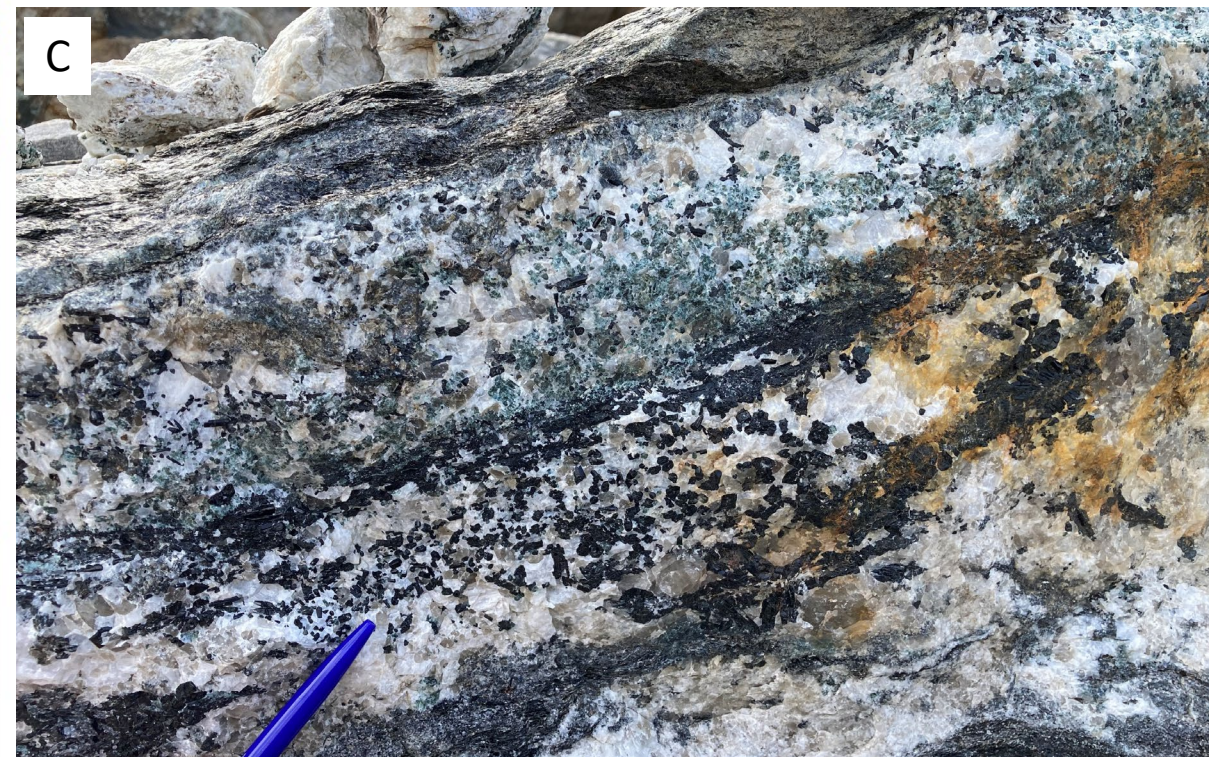
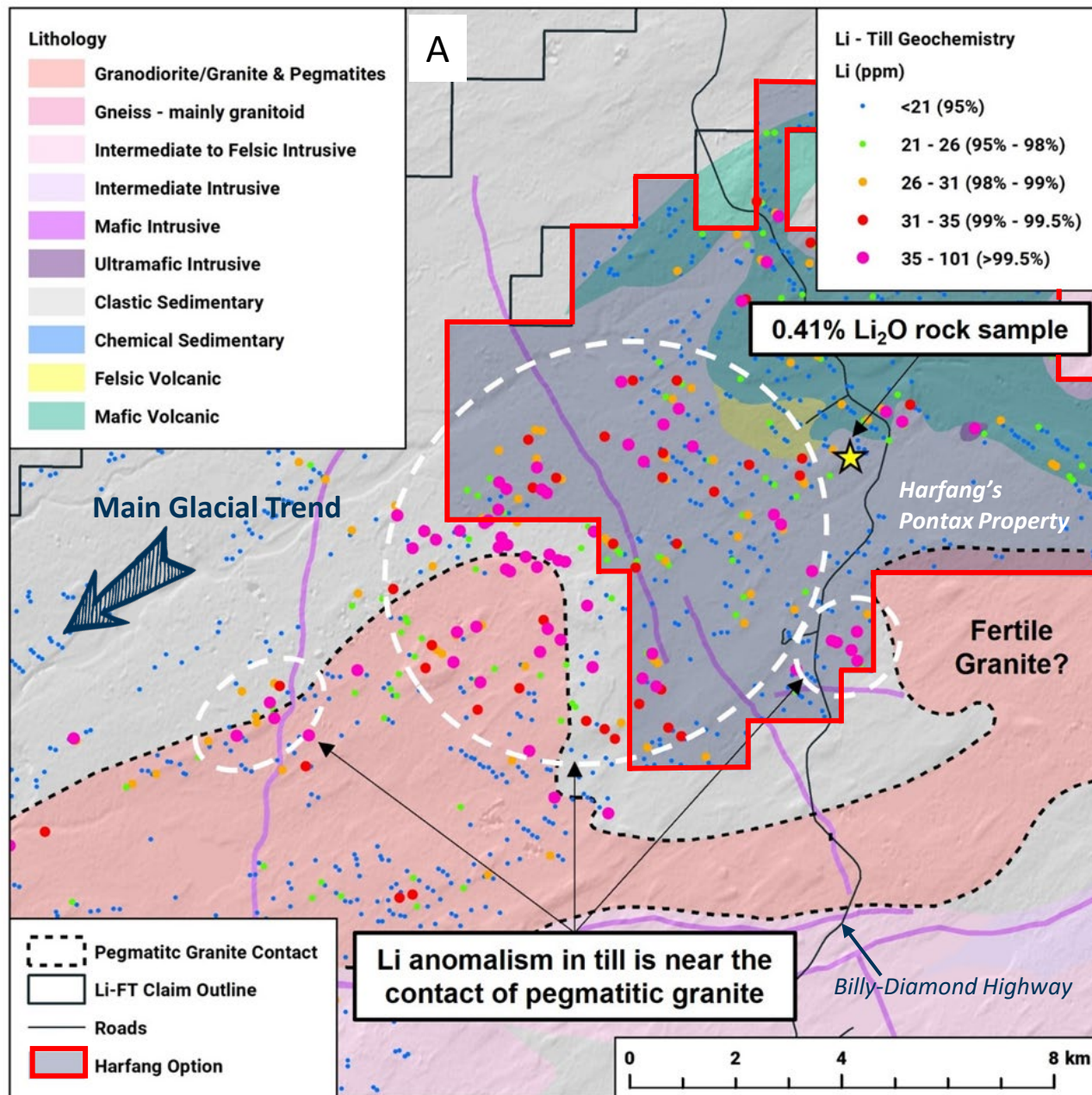


**Figure 1.** The red outline shows the limit of Harfang's Pontax Property inside the larger Li-FT's Pontax Project. The lithium-in-till anomaly suggests lithium-bearing pegmatites are located up-ice, probably inside our Property. The original figure was published in Li-FT's news release dated on November 15, 2022.





**Figure 2. A)** Lithium anomaly in the southwestern part of the Property adjacent to a fertile (?) granitic intrusion (modified from the figure in Li-FT's news release dated on November 15, 2022); **B)** Pegmatite dykes in a quarry where a sample returned 0.41% Li<sub>2</sub>O; **C)** Complex pegmatite dyke with tourmaline, apatite and muscovite in the quarry.