

Figure 1. Location of Harfang's projects with respect to significant lithium occurrences in Eeyou Istchee James Bay. The Serpent-Radisson project has both gold and CSM occurrences.

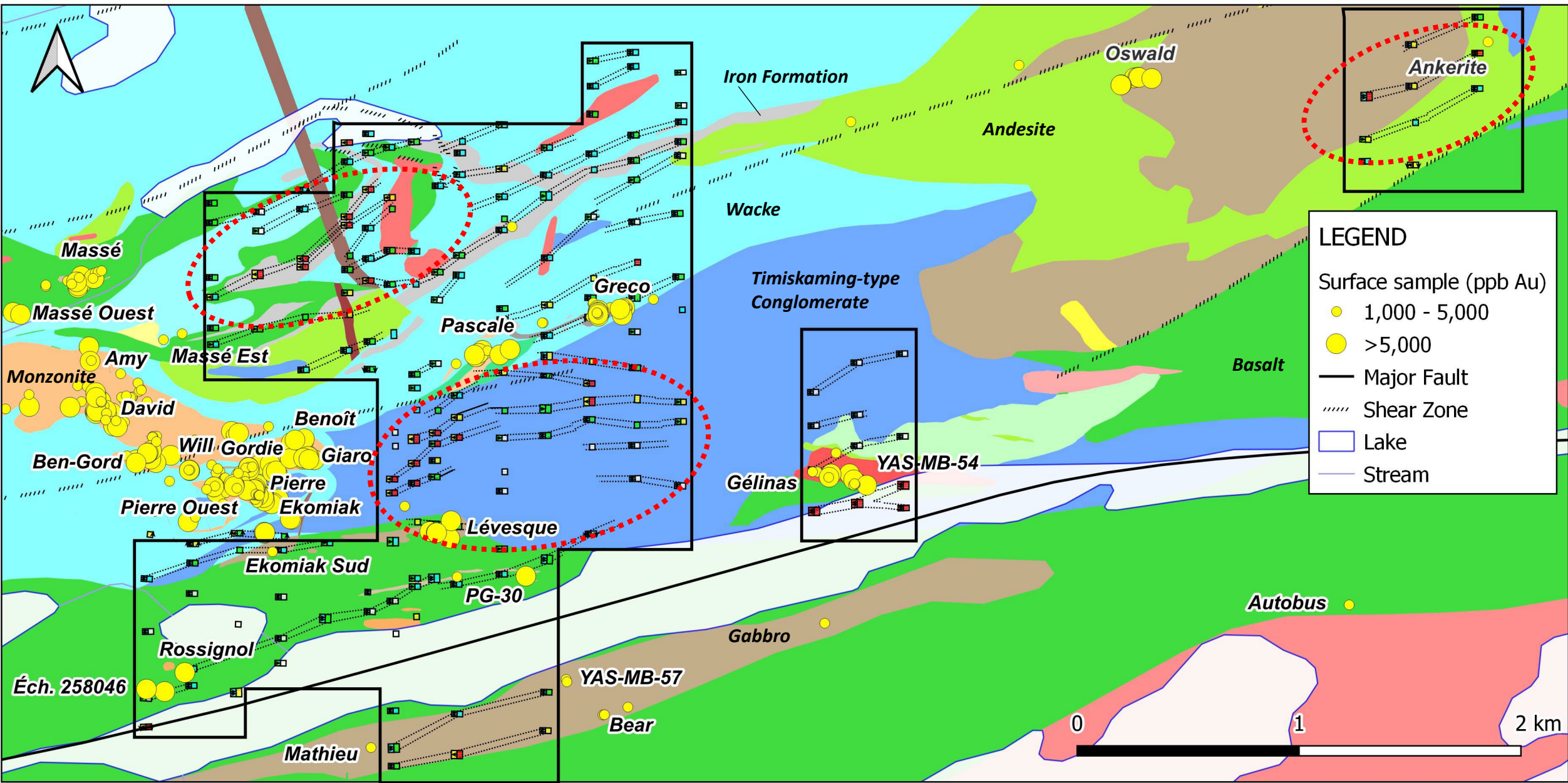


Figure 2. Map showing the chargeability anomalies from the 2023 IP survey with respect to the geology map and gold occurrences on the Lake Menarik Property. The black polygons show the limits of the 2023 IP survey. The red stippled ellipses show areas with first-priority IP targets to be prospected.

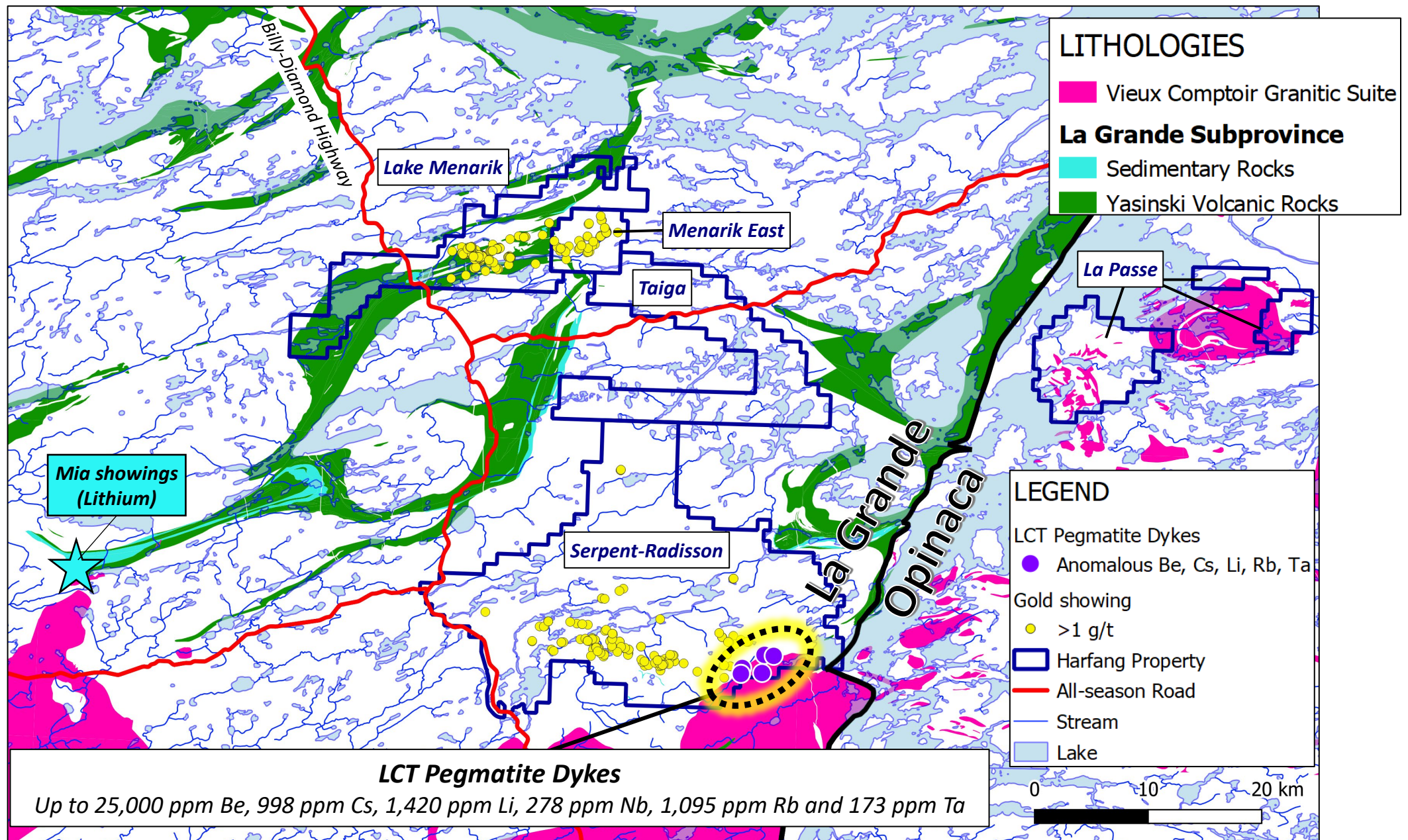


Figure 3. Location of Harfang's properties in the northwestern portion of Eeyou Istchee James Bay with gold occurrences and LCT pegmatites discovered by the Company and previous explorers.