

Figure 1. Location of Harfang's projects with respect to lithium deposits and significant occurrences in Eeyou Istchee James Bay. The Serpent-Radisson Property has both gold and Critical and Strategic Mineral occurrences ("CSM"). The Lemare Property is located next to the Whabouchi lithium deposit.

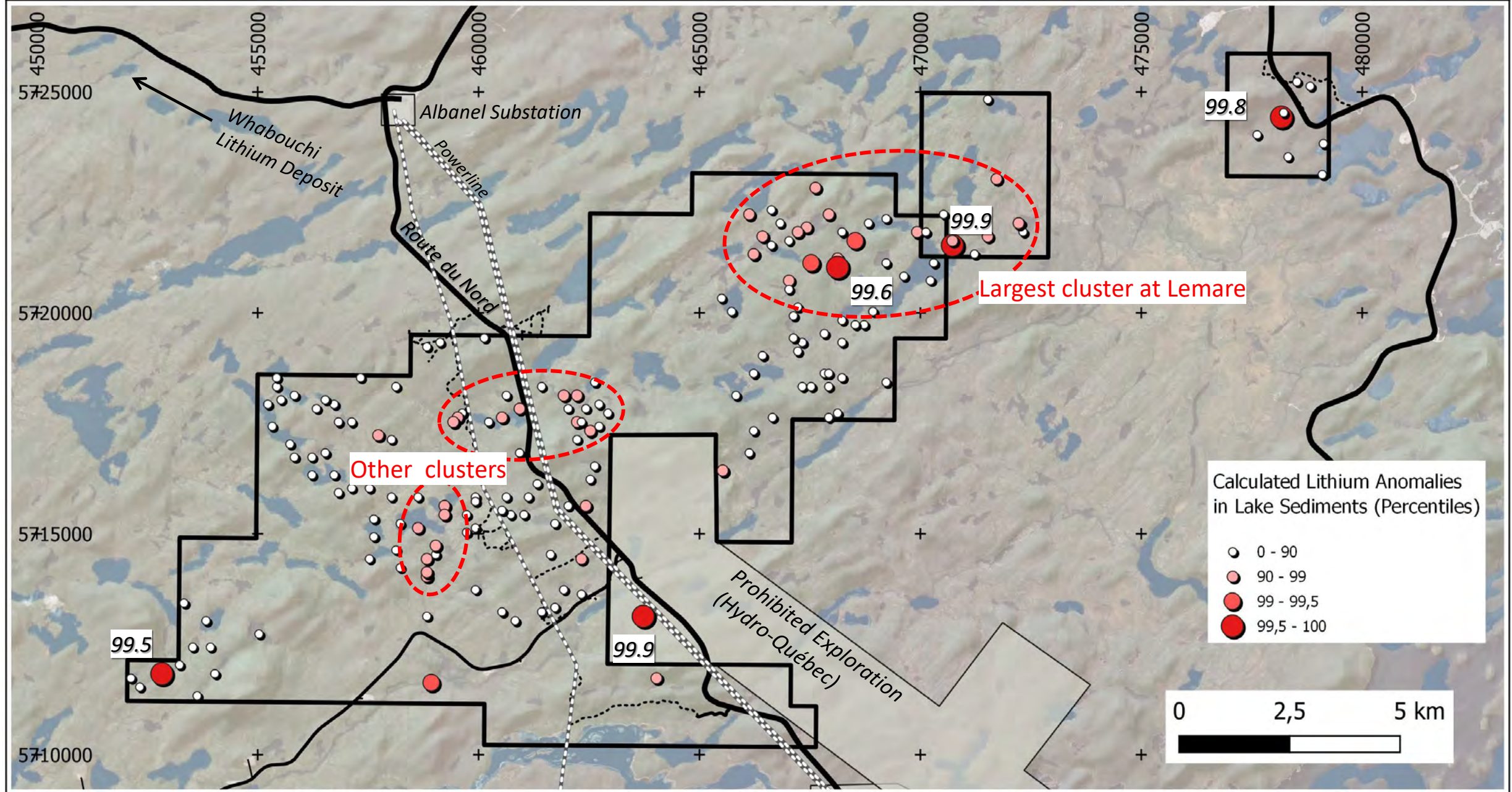


Figure 2. Calculated lithium anomalies from lake sediments shown as percentiles inside the limits of the Lemare Property. Four samples $\geq 95.5^{\text{th}}$ percentile are located inside the property. Another sample $\geq 95.5^{\text{th}}$ percentile is in the area prohibited for mineral exploration.