



HARFANG

— **EXPLORATION INC.** —

Corporate Presentation | November 2023

TSXV:HAR



HARFANG
EXPLORATION INC.

FORWARD-LOOKING STATEMENTS

FORWARD-LOOKING STATEMENTS

This presentation contains forward-looking information within the meaning of applicable securities legislation, which reflects the Corporation's current expectations regarding future events. Such statements can be recognized by the terms "forecast", "anticipate", "consider", "foresee" and other terms and similar expressions. In this presentation there is forward-looking information based on a number of assumptions and subject to a number of risks and uncertainties, many of which are beyond the Corporation's control that could cause actual results and events to differ materially from those that are disclosed in or implied by such forward-looking information. Such risks and uncertainties include, but are not limited to, the factors discussed under "Risk Factors" in Section 16 of the Company's Management Discussion and Analysis filed on SEDAR at www.sedar.com. Any forward-looking information included in this presentation is based only on information currently available to the Corporation and speaks only as of the date on which it is made. Except as required by applicable securities laws, the Corporation assumes no obligation to update or revise any forward-looking information to reflect new circumstances or events.

TECHNICAL CONTENT

Technical content within this presentation concerning the Serpent-Radisson Project is derived from the technical report prepared for Harfang Exploration Inc. and LaSalle Exploration Corp. dated January 31, 2022 by GeoVector Management Inc. and from work completed by Harfang and LaSalle since the effective date of the technical report.

Technical content within this presentation concerning the Blakelock Project is derived from the technical report prepared for LaSalle Exploration Corp. dated September 30, 2019 by Geologica Groupe-Conseil Inc. and from work completed by LaSalle since the effective date of the technical report.

The technical reports are available at www.sedar.com under the profile of LaSalle Exploration Corp.

The technical information in this presentation has been prepared and approved by François Huot, P.Geo, Vice President, Exploration at Harfang, and Ian Campbell, P.Geo, President and CEO at Harfang, both a non-independent "qualified person" as defined by National Instrument 43-101 (NI 43-101) Standards of Disclosure for Mineral Exploration Projects.

HARFANG: A Discovery Driven Exploration Company



- 1 Experienced Management and Board**
Track record of success in exploration and business development
- 2 Strategy – Explore, Partner, Monetize Projects**
Maximum exposure for shareholders
- 3 Tier 1 Jurisdiction**
Eeyou Istchee James Bay and Abitibi districts of Québec and Ontario

- 4 Technically Driven Business Approach**
Systematic and science driven, with boots on the ground
- 5 Strong Financial Position**
Solid cash position (\$6.2 M, Sept. 1, 2023)
- 6 Commitment to Best Practices**
Care and governance with our engagement, social licence and the environment

MANAGEMENT TEAM



Ian Campbell
President and Chief Executive Officer



François Huot
Vice President, Exploration



Yvon Robert
Chief Financial Officer



Marc Pothier
Corporate Secretary and Legal Advisor

BOARD OF DIRECTORS



Jean-Pierre Janson
Director, Chair

- Chairman of Midland Exploration
- Former Managing Director at Richardson GMP Limited



Karen Rees
Director, Chair of Compensation and Governance

- Former VP Exploration/Secretary at Temex Resources Corp.
- 30+ years experience in the mineral exploration industry



Daniel G Innes
Director

- Geologist and Former CEO of Lake Shore Gold Corp.
- 35+ years experience in the mineral exploration industry



Ian Campbell
Director

- Former President and CEO of Temex Resources
- 35+ years experience in the mineral exploration industry



Vincent Dubé-Bourgeois
Director, Chair of Audit Committee

- Founder, Director and CEO of Goldspot Discoveries Corp.



Sylvie Prud'homme
Director

- Geologist and former Manager, Investor Relations for Osisko Mining Corporation
- 35+ years experience in the mineral exploration industry

Gold and Lithium in James Bay (Québec) and Ontario

High-grade Gold Projects

Serpent-Radisson (Au-Cu-Li)

- District-scale gold endowment with >50 showings
- Multiple gold-bearing structures
- Spodumene discovery in Li-Cs-Ta pegmatite

Egan (Au)

- Central to Timmins-Kirkland Lake-Matachewan mining camps
- High-grade gold discovery in syenite

Lake Menarik (Au)

- Monzonite-hosted high-grade gold
- Grab samples to 1,918 g/t Au
- Drilling includes 1.15 g/t Au over 47.0 m

Blakelock (Au)

- 15 kilometres along the Casa Berardi trend
- Drilling results include 10.9 g/t Au over 10.25 m and 11.53 g/t Au over 6.0 m

Critical and Strategic Minerals Projects (Québec)

La Passe (Li, Au)

- Sedimentary rocks and peraluminous pegmatite dykes along the La Grande-Opinaca contact

Ewart (Li)

- Banded peraluminous pegmatite dykes enriched in beryllium

Pontax (Li, Ta, Au)

- Li-FT Power earning an initial 51% by spending \$3 M (July 2022)
- Highly prospective for lithium and tantalum-bearing pegmatites
- Greenstone belt prospective for gold along the Billy-Diamond Highway

Menarik Est (Cr, Ni, PGE, Au)

- Non-compliant Cr-PGE resource in a mafic-ultramafic complex
- Multiple Ni, PGE and Au showings
- 1.88% Ni, 0.35% Cu over 4.5 m (drill hole)

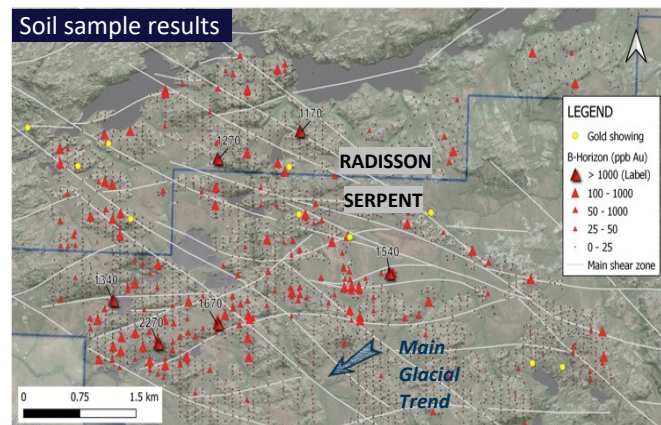
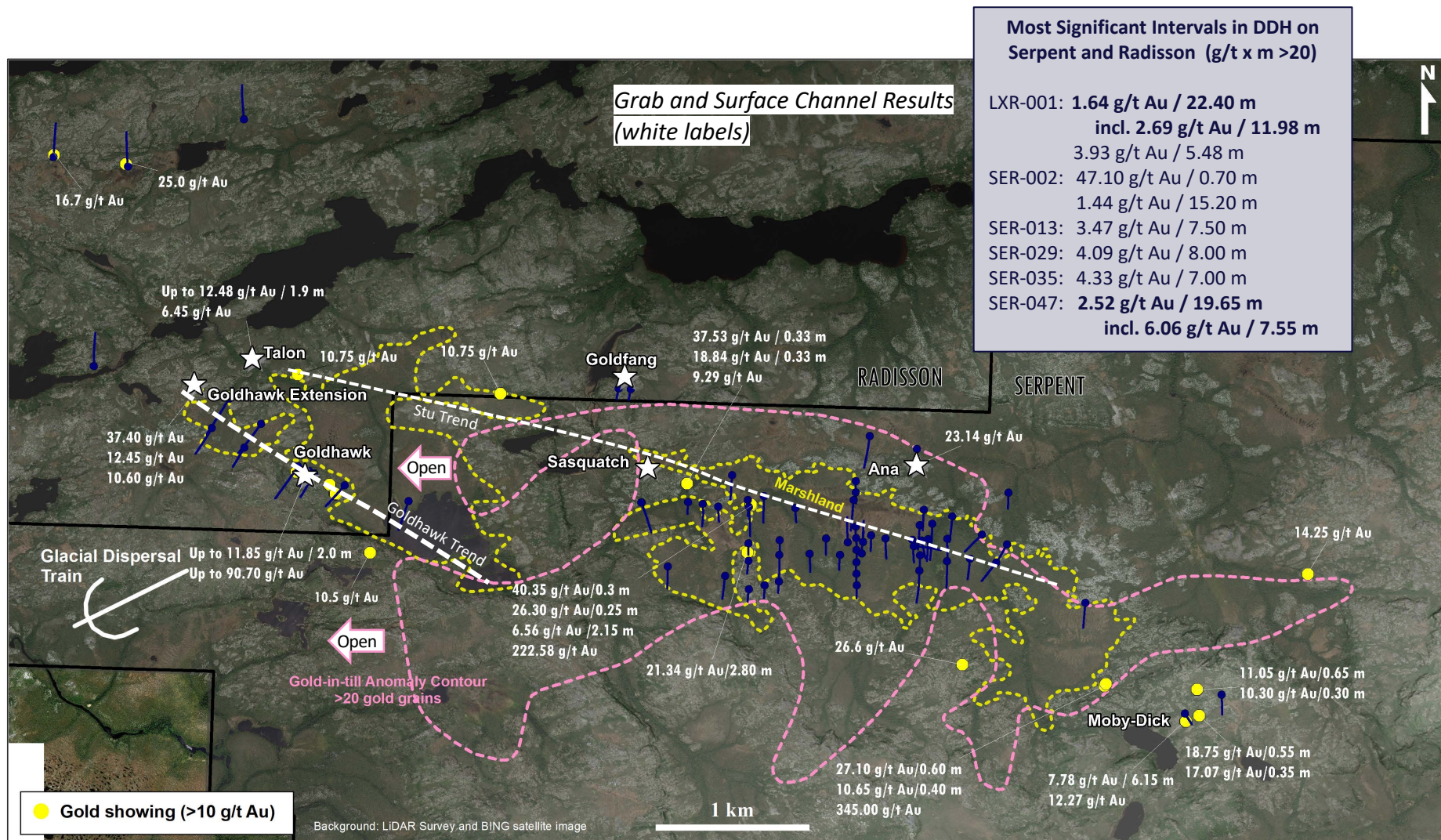




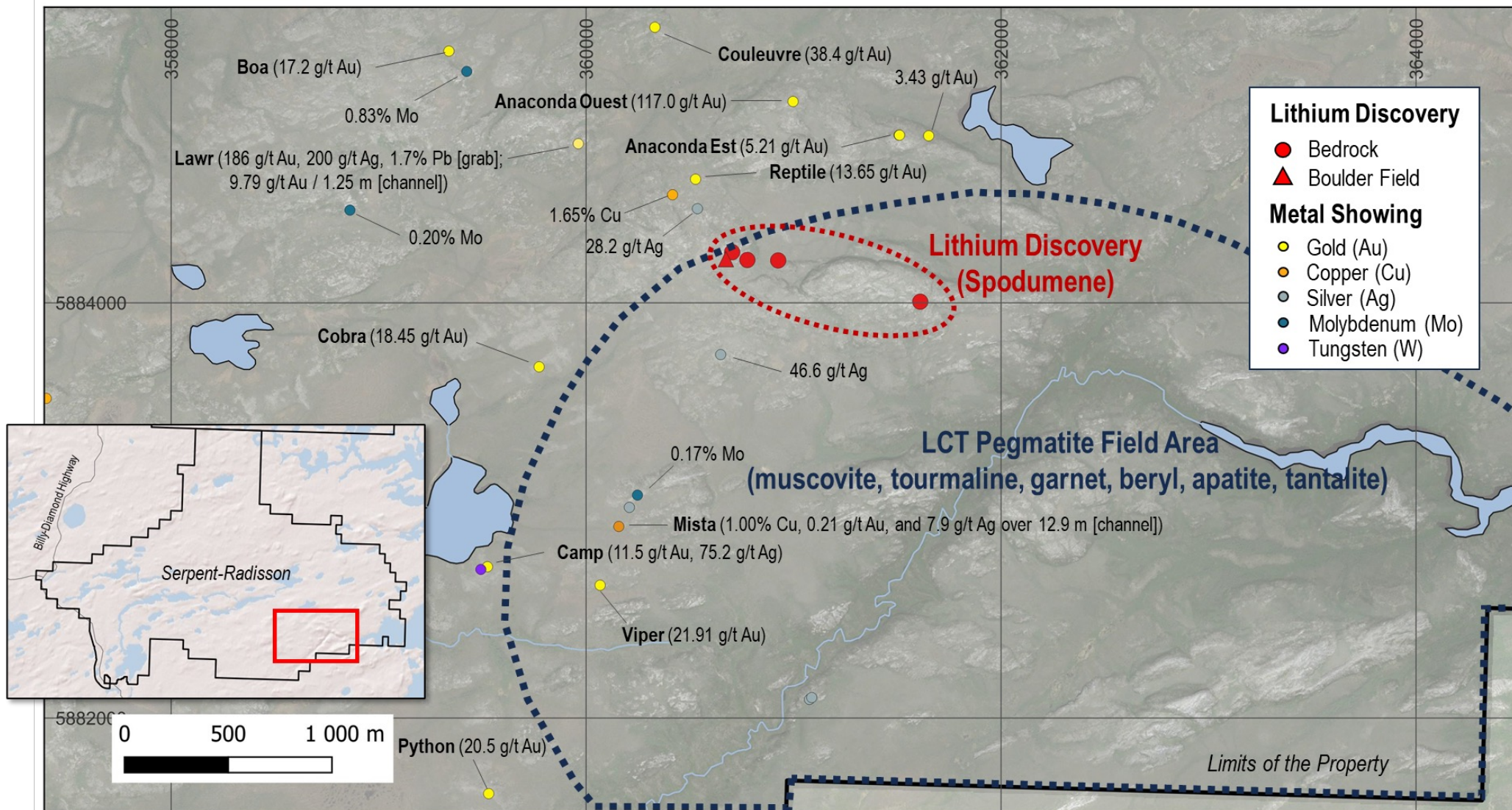
-
- Grab and Surface Channel Results**
- Legend:**
- Gold showing (>10 g/t Au)
 - Gold showing (1-10 g/t Au)
 - Cu, Ni, Ag, Mo, Cr or PGE showing
 - Be, \pm Cs, \pm Li, \pm Rb, \pm Ta showing
- Map Labels:**
- SERPENT
 - RADISSON
 - Billy-Diamond Highway
 - Transtaiga Road
 - La Pointe
 - Patwon
 - Éléonore Mine
 - 20 km
 - 3 km
 - North arrow
- Data Points (Examples):**
- 208.0 g/t Au / 0.75 m
 - 104.42 g/t Au / 0.90 m
 - 296.0 g/t Au
 - 124.99 g/t Au
 - 60.45 g/t Au
 - 32.90 g/t Au
 - 33.76 g/t Au
 - 15.7 g/t Au
 - 37.53 g/t Au / 0.33 m
 - 18.84 g/t Au / 0.33 m
 - 40.35 g/t Au / 0.3 m
 - 222.58 g/t Au
 - 12.96 g/t Au
 - 91.48 g/t Au / 0.45 m
 - 54.75 g/t Au
 - 33.84 g/t Au
 - 17.79 g/t Au
 - Up to 12.48 g/t Au / 1.9 m
 - 10.75 g/t Au
 - 16.7 g/t Au
 - 25.0 g/t Au
 - 10.75 g/t Au
 - 37.40 g/t Au
 - 12.45 g/t Au
 - 10.60 g/t Au
 - Up to 11.85 g/t Au / 2.0 m
 - Up to 90.70 g/t Au
 - 17.55 g/t Au
 - 10.65 g/t Au / 0.4 m
 - 27.1 g/t Au / 0.6 m
 - 340.0 g/t Au
 - 21.34 g/t Au / 2.8 m
 - 23.14 g/t Au
 - 14.25 g/t Au
 - 45.5 g/t Au (bl)
 - 13.25 g/t Au (bl)
 - 24.91 g/t Au (bl)
 - 17.07 g/t Au / 0.35 m
 - 18.75 g/t Au / 0.55 m
 - 7.78 g/t Au / 6.15 m
 - Up to 186 g/t Au
 - 9.79 g/t Au / 1.25 m
 - 17.2 g/t Au
 - 38.4 g/t Au
 - 117.0 g/t Au
 - 43.4 g/t Au
 - 18.45 g/t Au
 - 21.91 g/t Au
 - 11.5 g/t Au
 - 20.5 g/t Au
- Other Findings:**
- Lithium Discovery (red star)
 - Li-Cs-Ta Pegmatite (green star)
 - Mista: 1.00% Cu, 0.21 g/t Au and 7.9 g/t Ag / 12.9 m
 - bl = boulder

Serpent-Radisson: Gold Zones Confirmed by Drilling Up-ice of the Gold-rich Till and Soils

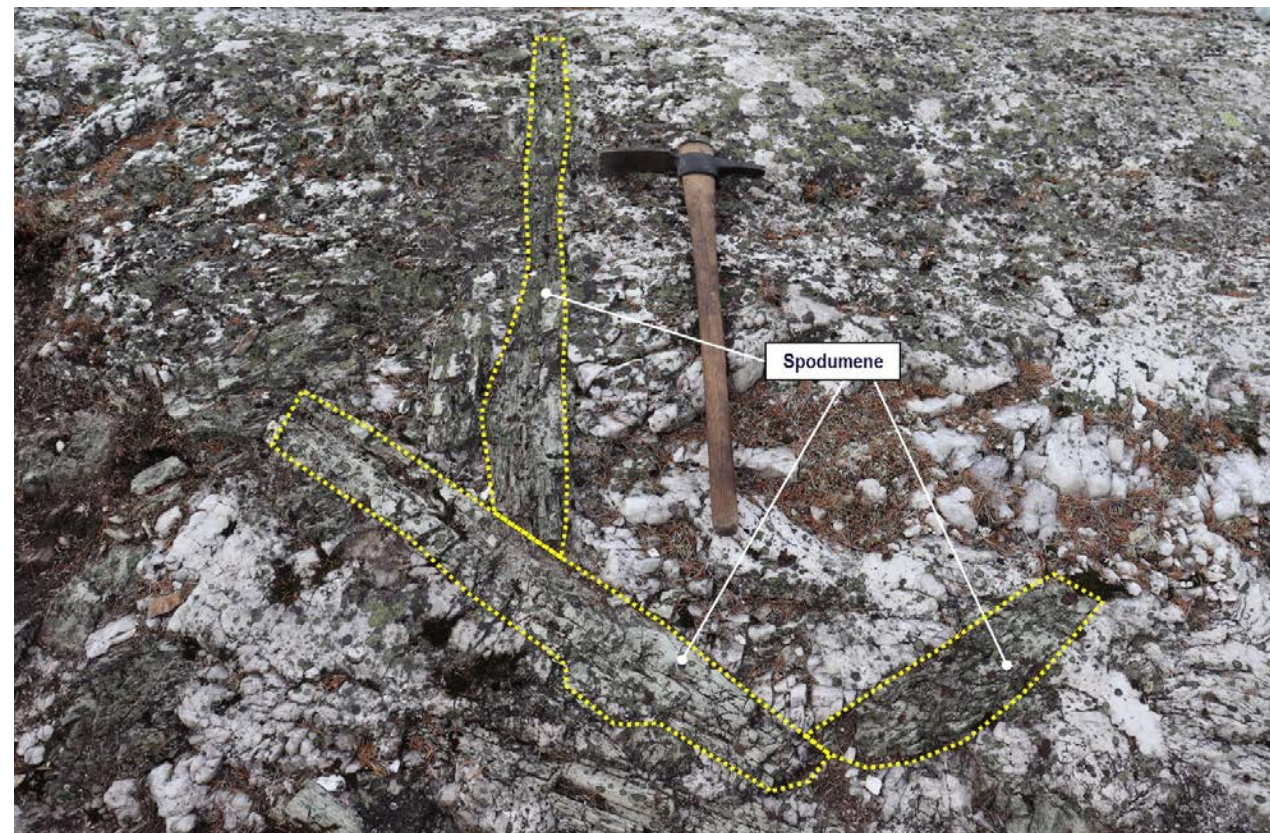
- Significant gold intervals were hit by drill holes up-ice from the gold-in-till anomaly (pink stippled contour on the figure)
- The till and soil anomalies may have different bedrock sources for gold (e.g., the Stu and Goldhawk trends and NE-SW shear zones)
- The till and soil anomalies remain open toward the southwest and west (former Radisson property)
- Total drilled: 14,949 m (76 holes)



Serpent-Radisson: Polymetallic Mineralization around the Lithium Discovery

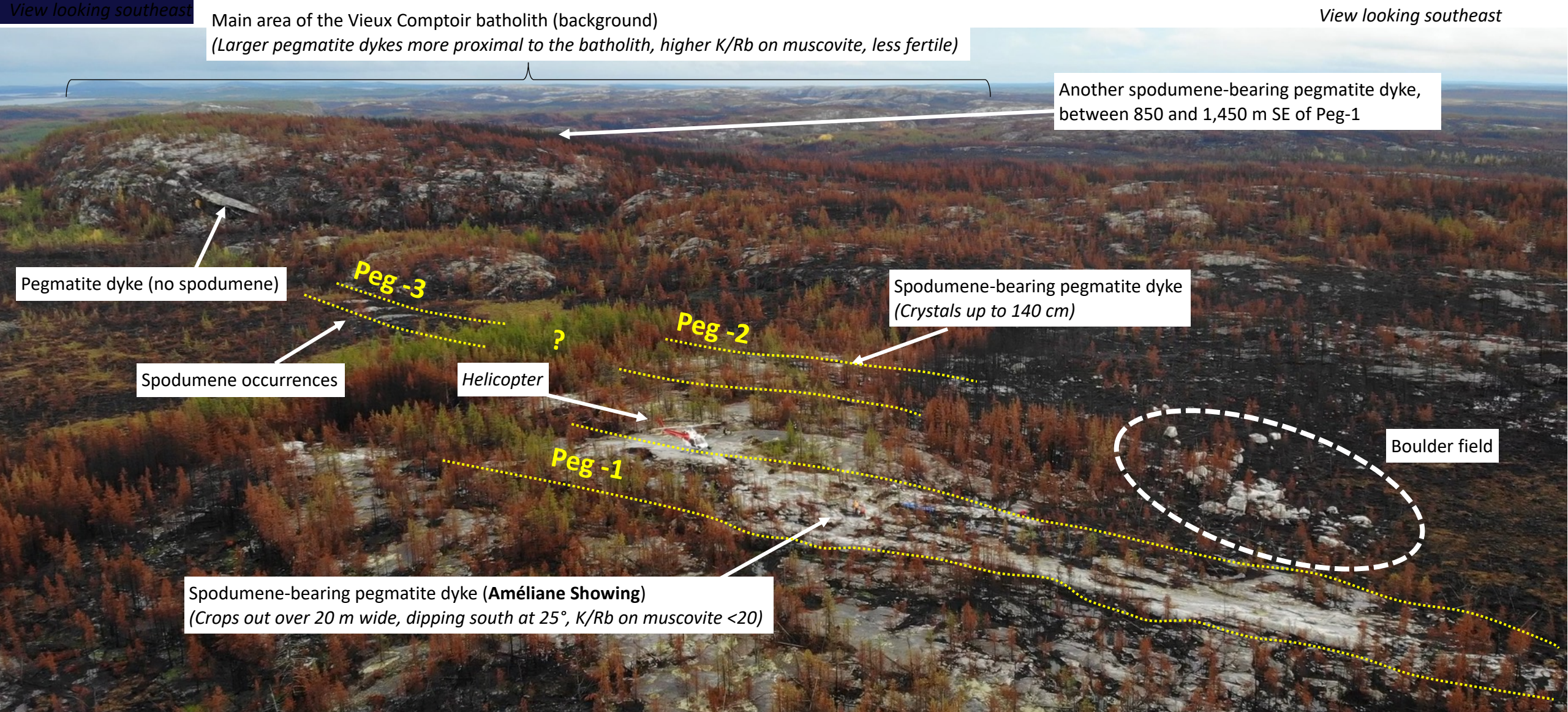


Serpent-Radisson: Lithium Discovery – Outcrops and Boulder Field with Spodumene



Serpent-Radisson:

Aerial view of the Lithium Discovery (Améliane Showing)



Main area of the Vieux Comptoir batholith (background)
(Larger pegmatite dykes more proximal to the batholith, higher K/Rb on muscovite, less fertile)

View looking southeast

Another spodumene-bearing pegmatite dyke,
between 850 and 1,450 m SE of Peg-1

Pegmatite dyke (no spodumene)

Spodumene occurrences

Peg -3

?

Helicopter

Peg -2

Spodumene-bearing pegmatite dyke
(Crystals up to 140 cm)

Peg -1

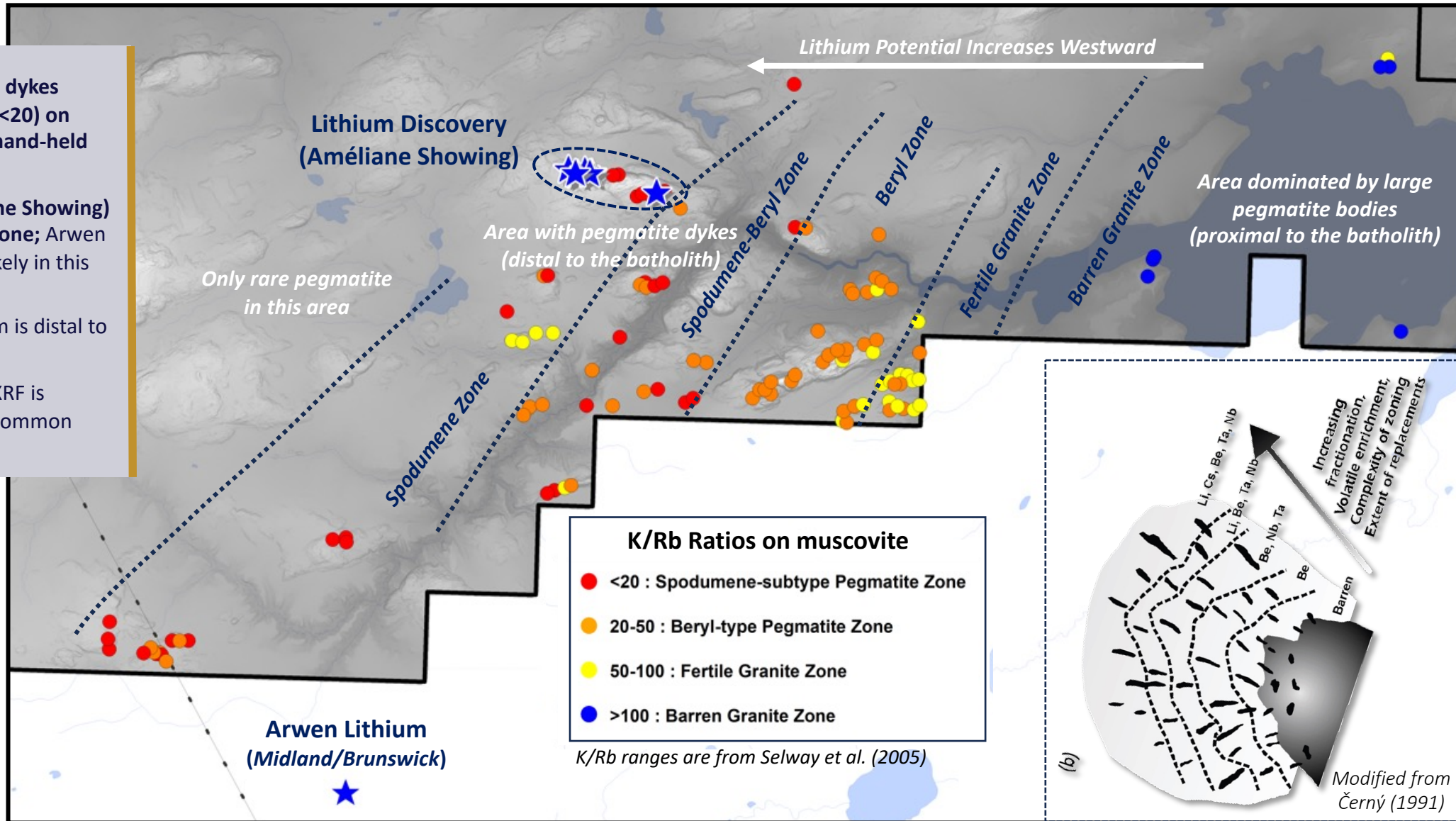
Spodumene-bearing pegmatite dyke (**Améliane Showing**)
(Crops out over 20 m wide, dipping south at 25°, K/Rb on muscovite <20)

Boulder field

Serpent-Radisson:

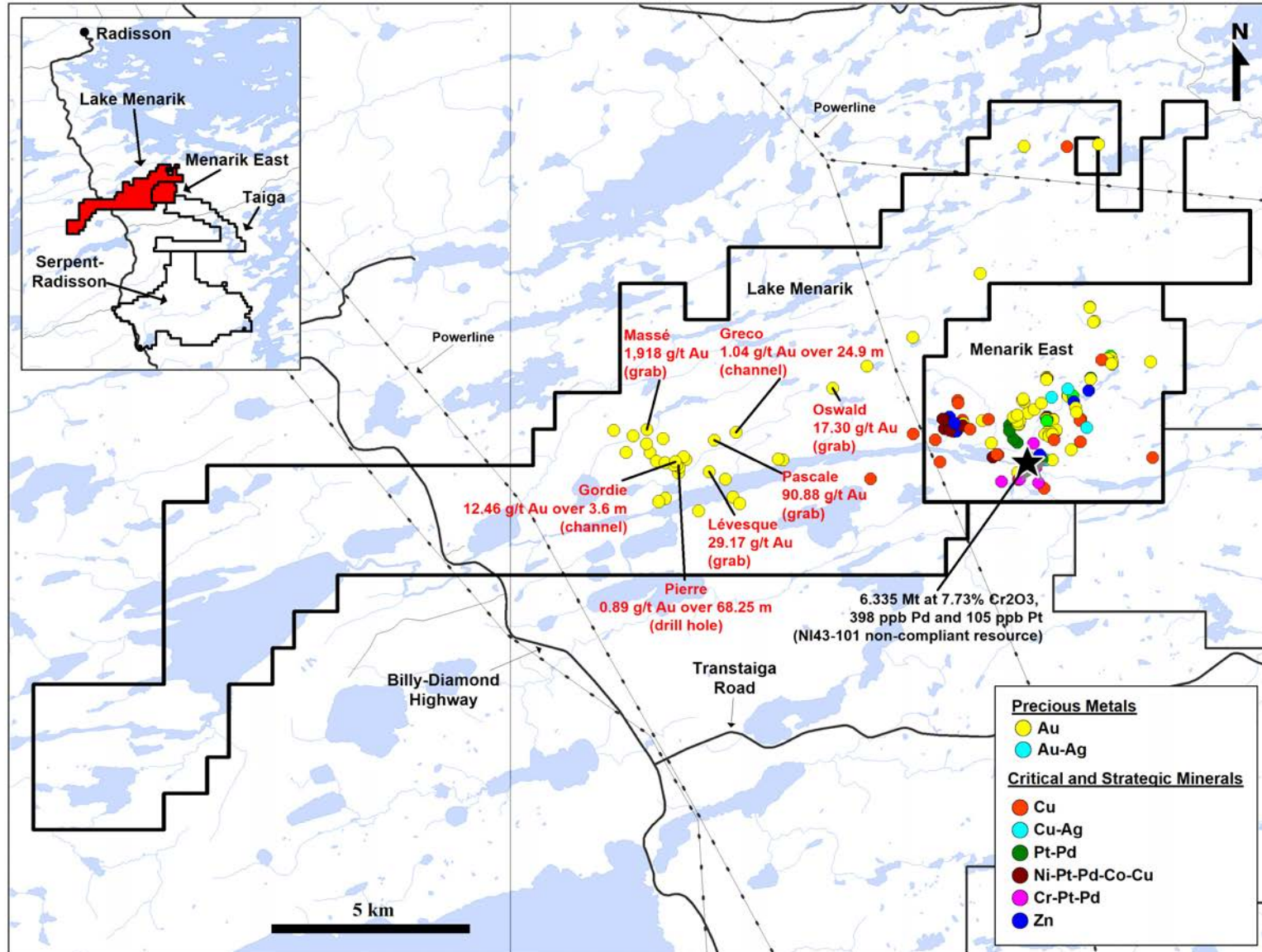
Targeting lithium using K/Rb ratios on muscovite in pegmatites (XRF)

- Spodumene zone in pegmatite dykes defined from low K/Rb ratios (<20) on muscovite obtained from the hand-held XRF instrument
- The lithium discovery (Amélie Showing) was made in the spodumene zone; Arwen (Midland/Brunswick) is most likely in this zone too
- The most fertile zone for lithium is distal to the Vieux Comptoir batholith
- The beryl zone defined by the XRF is dominated by pegmatite with common beryl crystals



The Menarik Projects: High-grade Gold and Critical and Strategic Minerals (Lithium)

- **Lake Menarik (304 claims; 15,627 ha; 100% Harfang)**
 - ✓ Gold in monzonite and volcano-sedimentary rocks
 - ✓ Strong structural control at greenschist facies
 - ✓ Massive ankerite alteration in extensive shear zones
- **Menarik East (64 claims; 3,289 ha; 100% Harfang)**
 - ✓ Chromium and nickel-copper with platinum-group elements in the Menarik mafic-ultramafic Complex
 - ✓ High-grade gold and silver in shear zone-hosted tonalite and gabbro
- Detailed heliborne magnetic survey on both properties (December 2022)
- New drill and IP results at Lake Menarik (Winter 2023)



Lake Menarik: Monzonite-associated and Mesothermal Lode Gold

Highly prospective geology

- ✓ Reminiscent of that of Timmins, Kirkland Lake and Matachewan gold camps
- ✓ Differentiated monzonite, polymictic conglomerate, lamprophyres, well-preserved volcano-sedimentary sequence (mainly greenschist facies)

Multiple high-grade gold occurrences

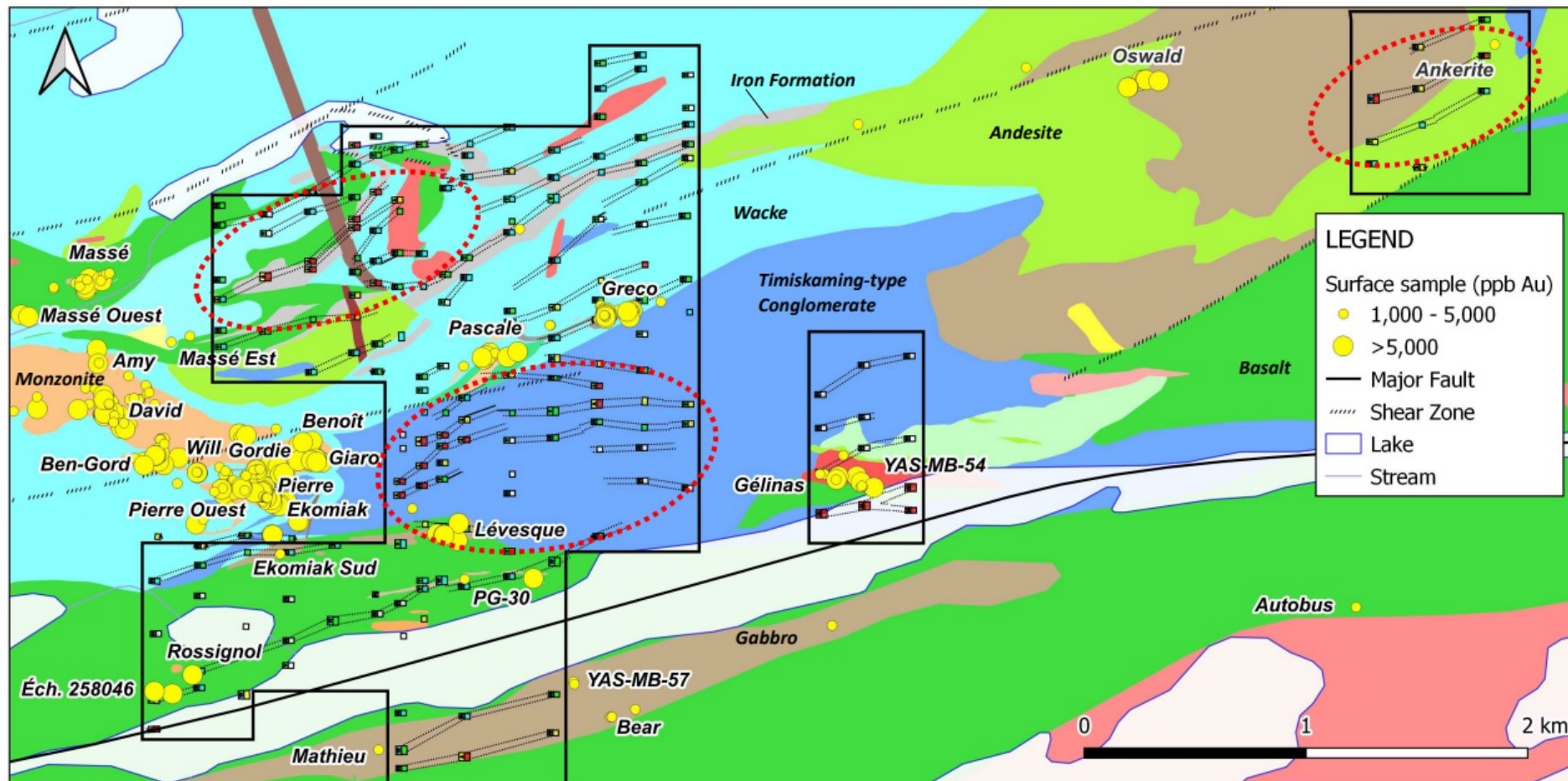
- ✓ Grabs up to 1,918 g/t Au (62 oz/t Au)
- ✓ Channels up to 12.46 g/t Au and 25.5 g/t Ag over 3.60 m
- ✓ DDH intersections at 1.15 g/t Au over 47.0 m and 0.89 g/t Au over 68.25 m

Extensive shear zones with massive ankerite alteration

- ✓ Up to 700 m long and 50 m wide

Winter Program 2023

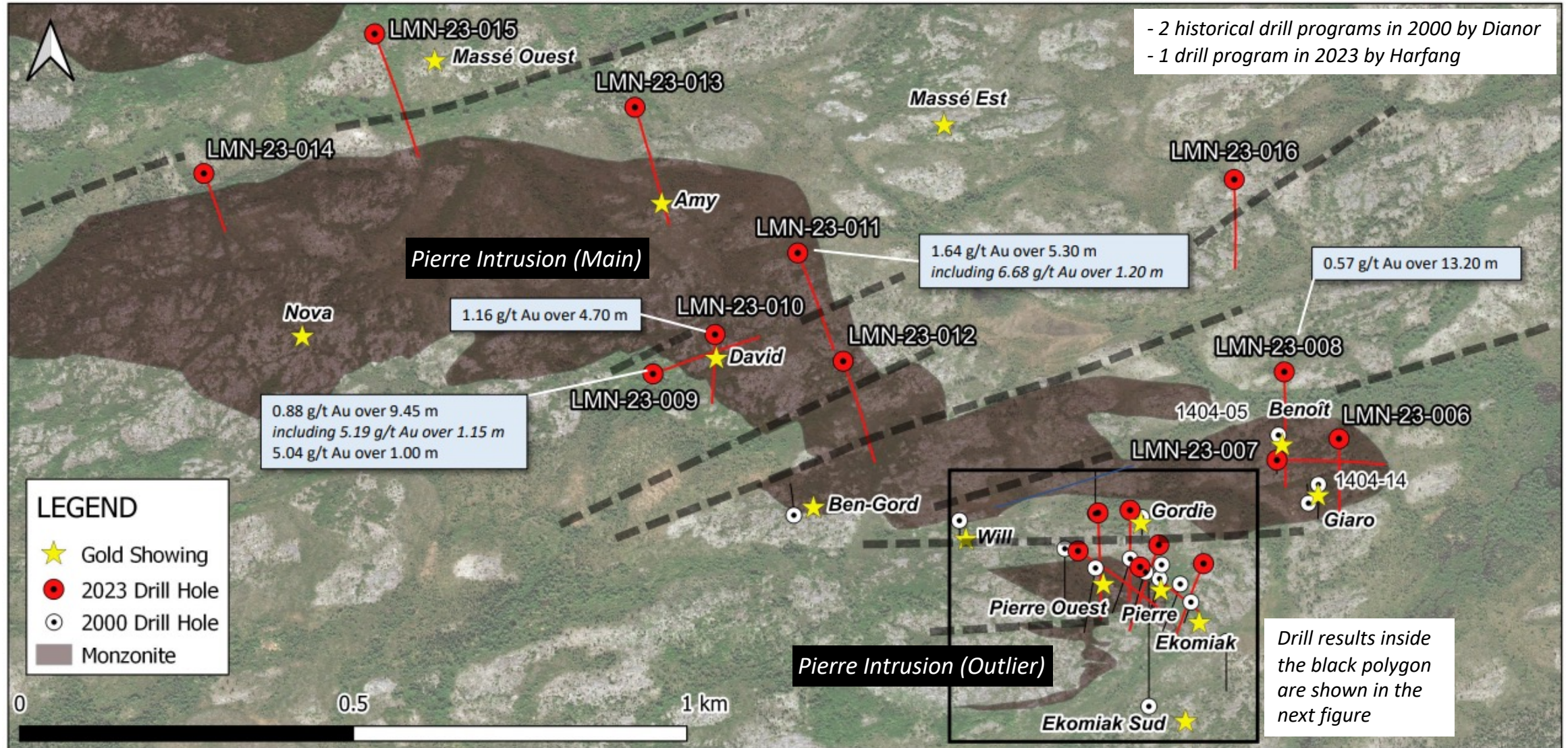
- ✓ Drilling yielded encouraging results
- ✓ Several prospective targets defined by the new IP axes (red stippled ellipses on the figure)



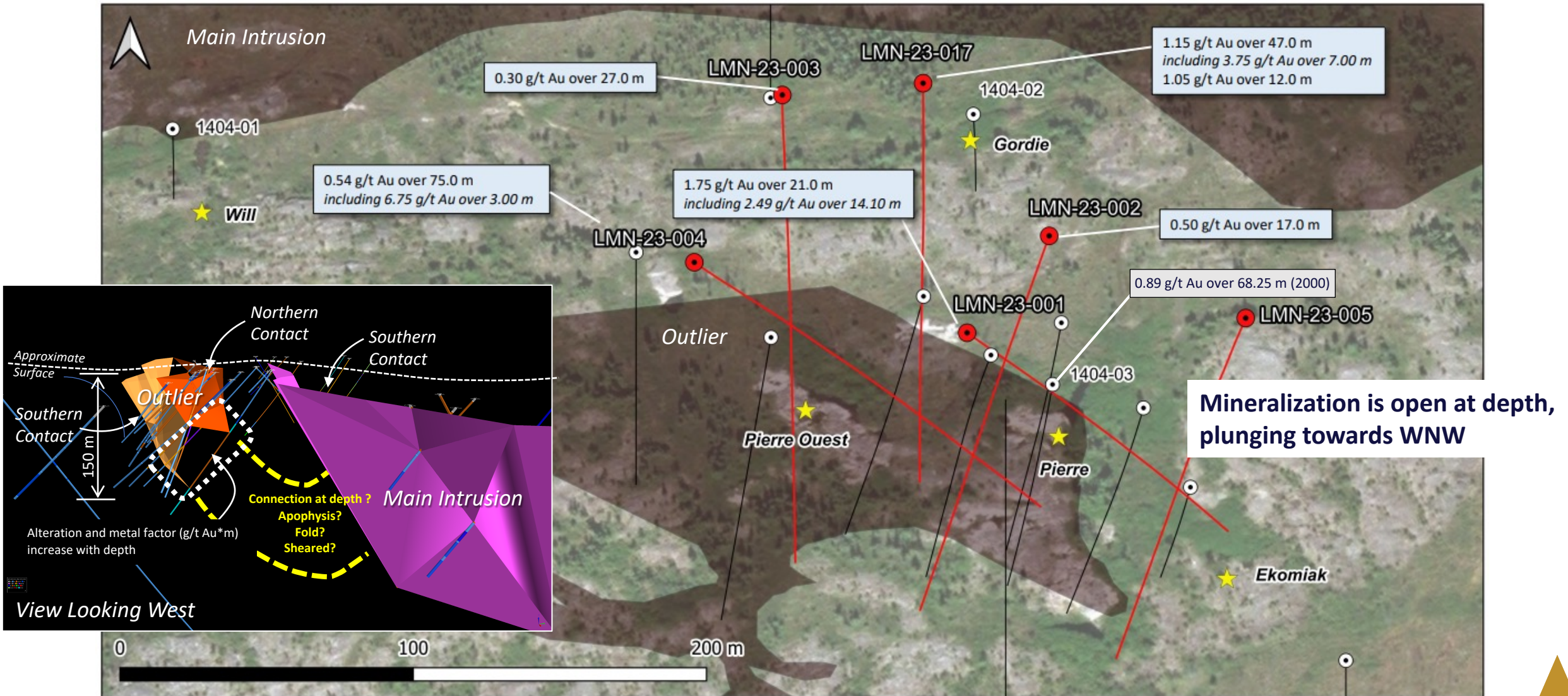
Massé: 1,918 g/t Au (grab)
 Pierre: 0.89 g/t Au over 68.25 m (DDH)
 Gordie: 12.46 g/t Au over 3.60 m (channel)
 Ekomiak: 61.5 g/t Au (grab)

Greco: 1.04 g/t Au over 24.9 m (channel)
 Pascale: 90.88 g/t Au (grab)
 Lévesque: 29.17 (grab)
 Oswald: 17.30 g/t Au, 217 g/t Ag and 0.61% Pb (grab)

Lake Menarik: Drill Results – Winter 2023 (General View)



Lake Menarik: Drill Results – Winter 2023 (Close-up on the Pierre Area)



- Lithium – leading the green revolution toward a sustainable and socially responsible conversion to electric energy
- Rapidly developing North American lithium district and infrastructure
- 5 lithium deposits defined (Corvette, James Bay Lithium, Whabouchi, Moblan, Rose)
 - Corvette: Inferred mineral resources estimate of 109.2 Mt at 1.42% Li₂O, one of the top 10 largest lithium pegmatite resources in the world
- Entry of Major Players into the region underscores the level of interest :
 - Transaction between Ford Motor Co. and Nemaska Lithium (Whabouchi Mine) for supply of lithium hydroxide for 11 years in May
 - Transactions involving Rio Tinto with Midland Exploration and Azimut Exploration
 - Private placement (C\$109 M) by Albemarle into Patriot Battery Metals
- Recent advancements at Corvette, Cancet, Adina, Lemare*, Mirage, Mia, Radis, Galinée, Trieste, Elmer Est, Elrond and Serpent-Radisson illustrate the unexplored nature of properties in areas previously prospected for gold [**Lemare refers to one of the projects of Critical Elements Lithium Corp.*]
- James Bay represents one of the largest untested land packages – several drill programs currently active for lithium
- Harfang is one of the largest land holders with 11 projects distributed throughout the region
 - New lithium discovery at Serpent-Radisson (September 2023)



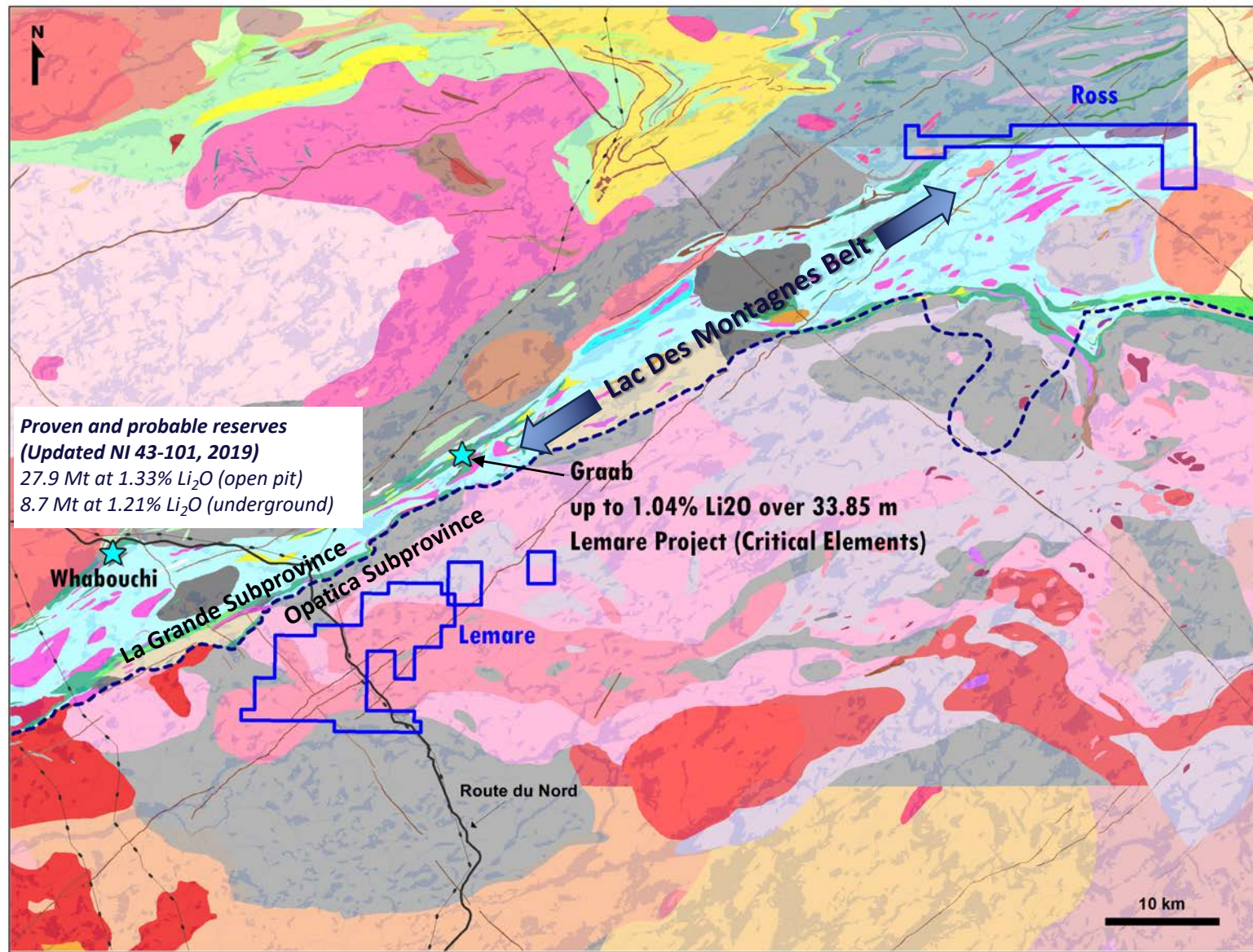
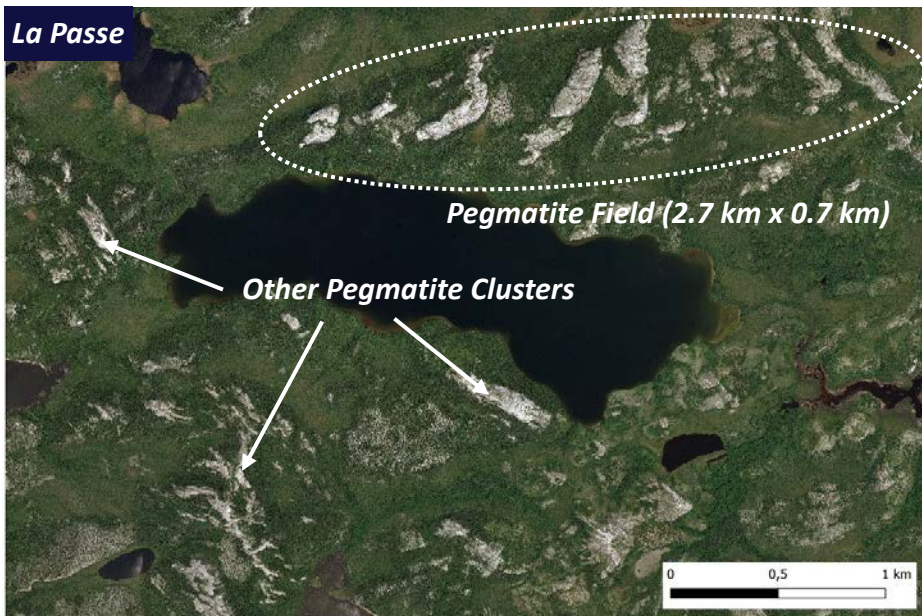
- [illegible]



Target Generation for Lithium

Examples from Lemare, Ross and La Passe Properties

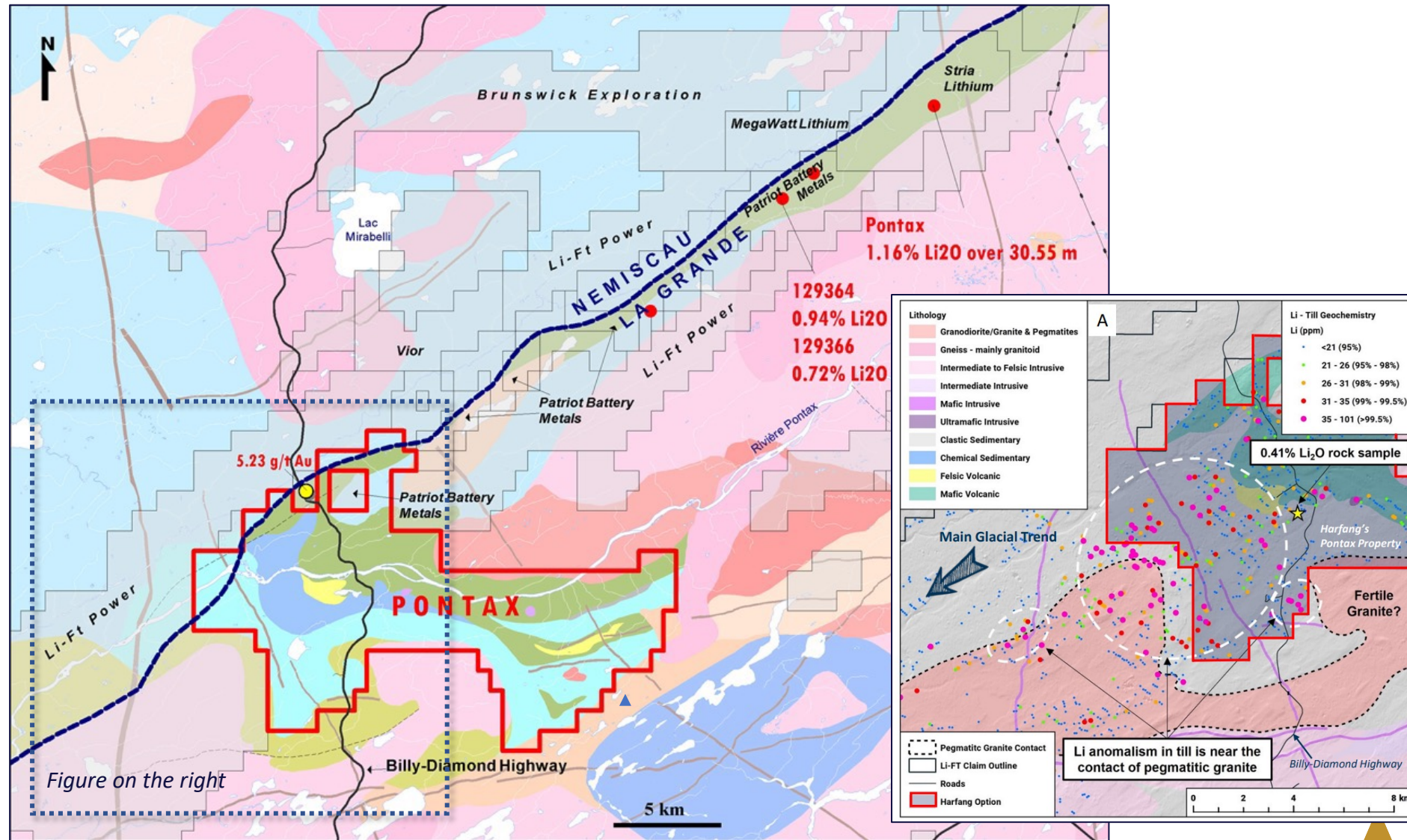
- **Lemare**
 - ✓ 7 outstanding lithium residual anomalies, 4 of which $\geq 99.5^{\text{th}}$ percentile
 - ✓ 22 km southeast of the Whabouchi lithium deposit; easily accessible by the Route du Nord all-seasons gravel road
- **La Passe**
 - ✓ Abundant and extensive pegmatite dykes
 - ✓ Favourable mineralogy: muscovite, tourmaline, garnet, apatite, beryl



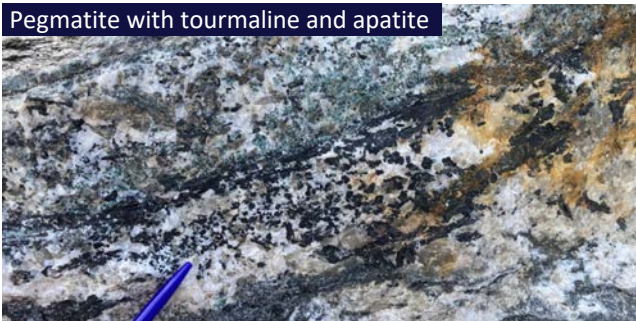
Pontax:

Under Option to Li-FT Power – earning up to 70%

- Discovery of a lithium showing (0.41 Li₂O%) and a Li-Cs-P-Nb-Ga-Mn-W-Mo ± Ta-Sn-Rb anomaly in till (8 km x 7.5 km) [summer 2022]
- Geological context highly favourable for lithium and gold
- 287 claims (15,323 ha), 100% Harfang
- Easy access along the Billy-Diamond Highway
- Li-FT Power can earn 70% with \$5 M exploration and cash payments of \$150,000 within 6 years

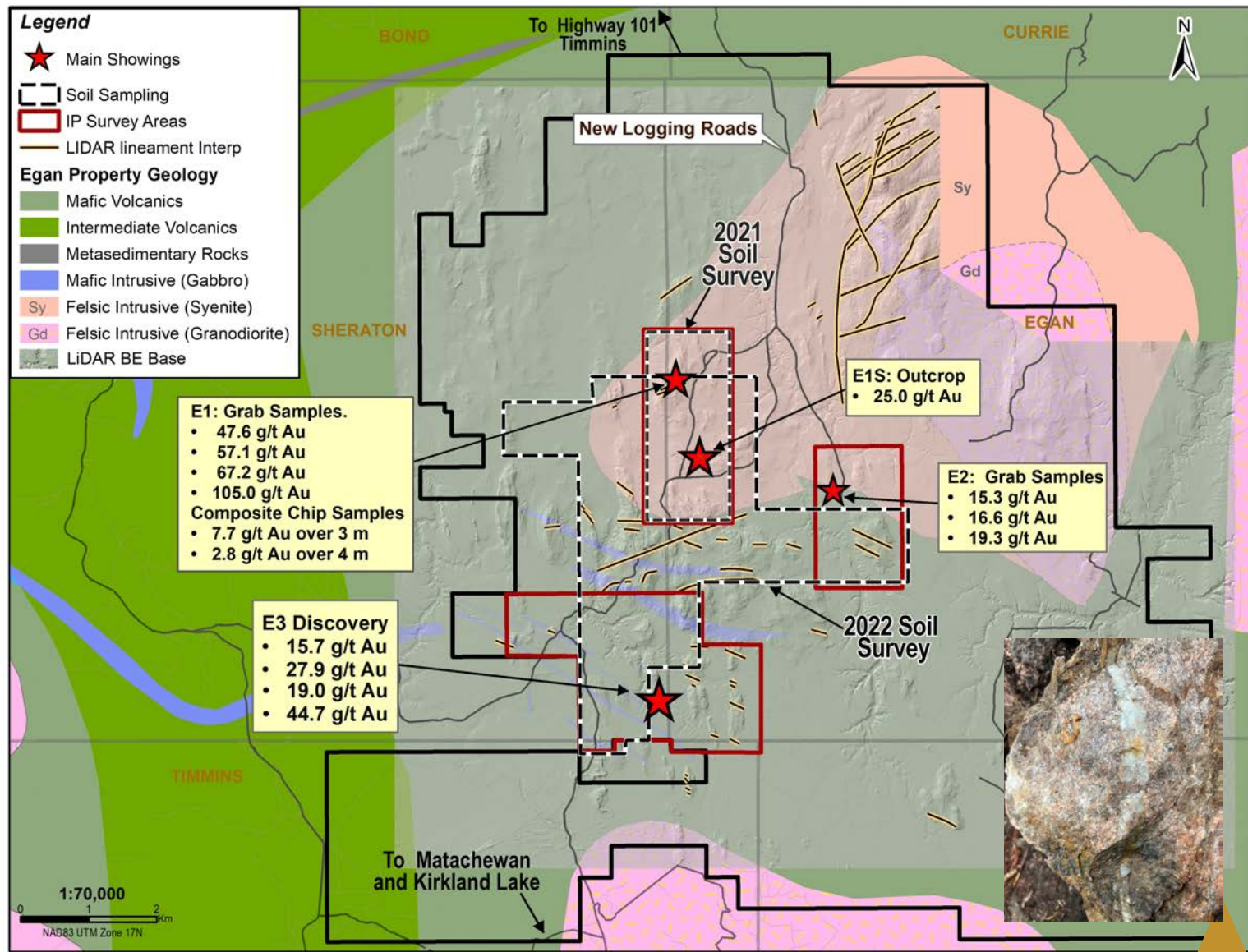
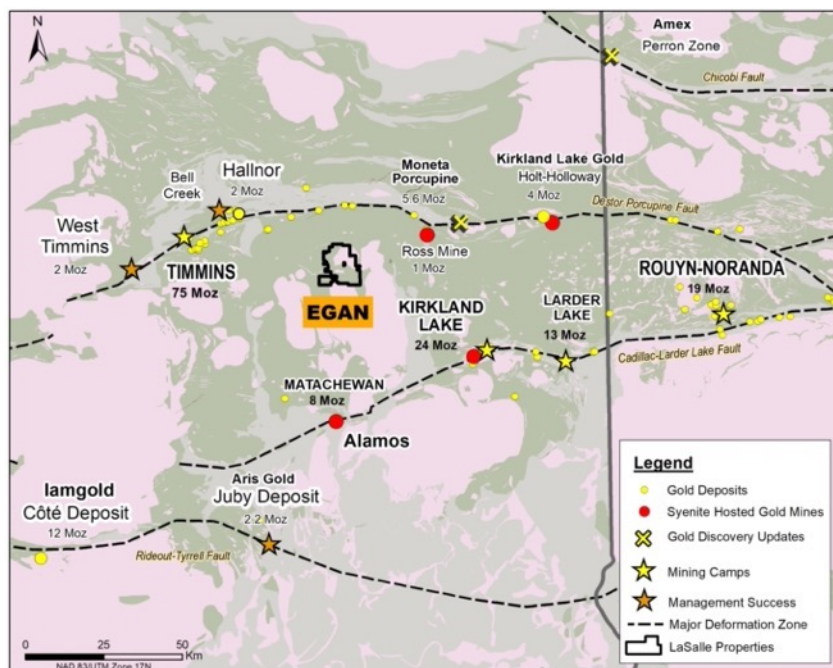


Pegmatite with tourmaline and apatite



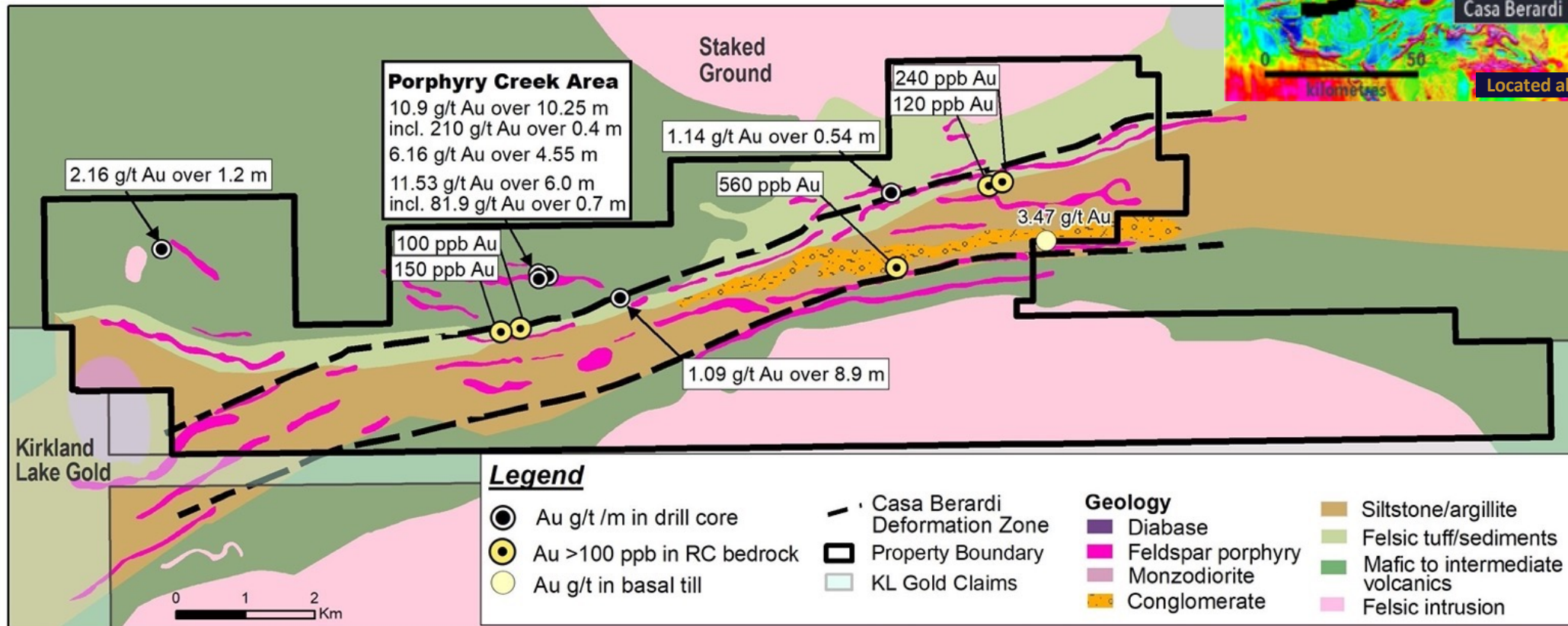
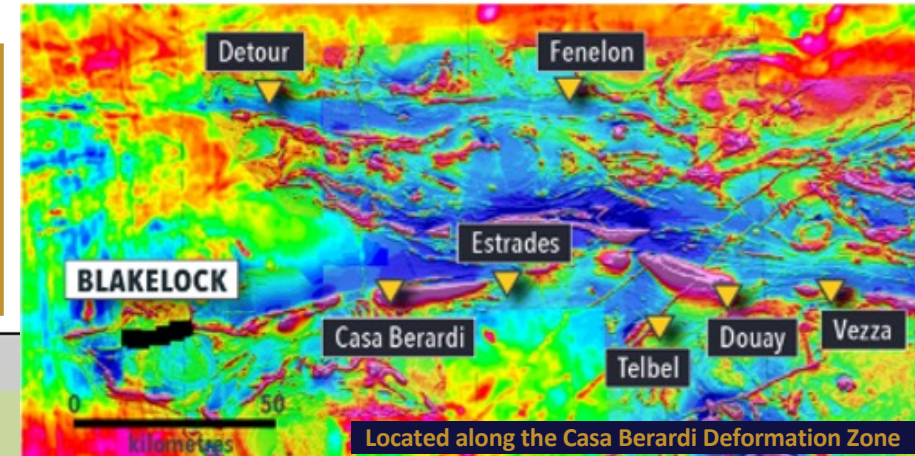
Egan Gold Project (Ontario): Syenite-hosted High-grade Gold

- Central to Timmins, Kirkland Lake and Matachewan gold camps
- Multiple high-grade gold occurrences at surface (up to 105 g/t Au; 7.7 g/t Au over 3 m)
- 454 claims (11,720 ha), 100% Harfang
- Good access along new logging roads
- Highly prospective and under-explored geology



Blakelock (Ontario): High-grade Gold along the Casa-Berardi Trend

- 340 claims (6,977 ha) strategically covering 15 km along the Casa-Berardi Deformation Zone (CBDZ)
- Historical drill intersections include 10.90 g/t Au and 97.5 g/t Ag over 10.25 m, and 6.16 g/t Au and 17.7 g/t Ag over 4.55 m
- Recently completed airborne magnetics and LiDAR surveys (2021)
- New interpretation demonstrates a highly prospective property-scale target zone

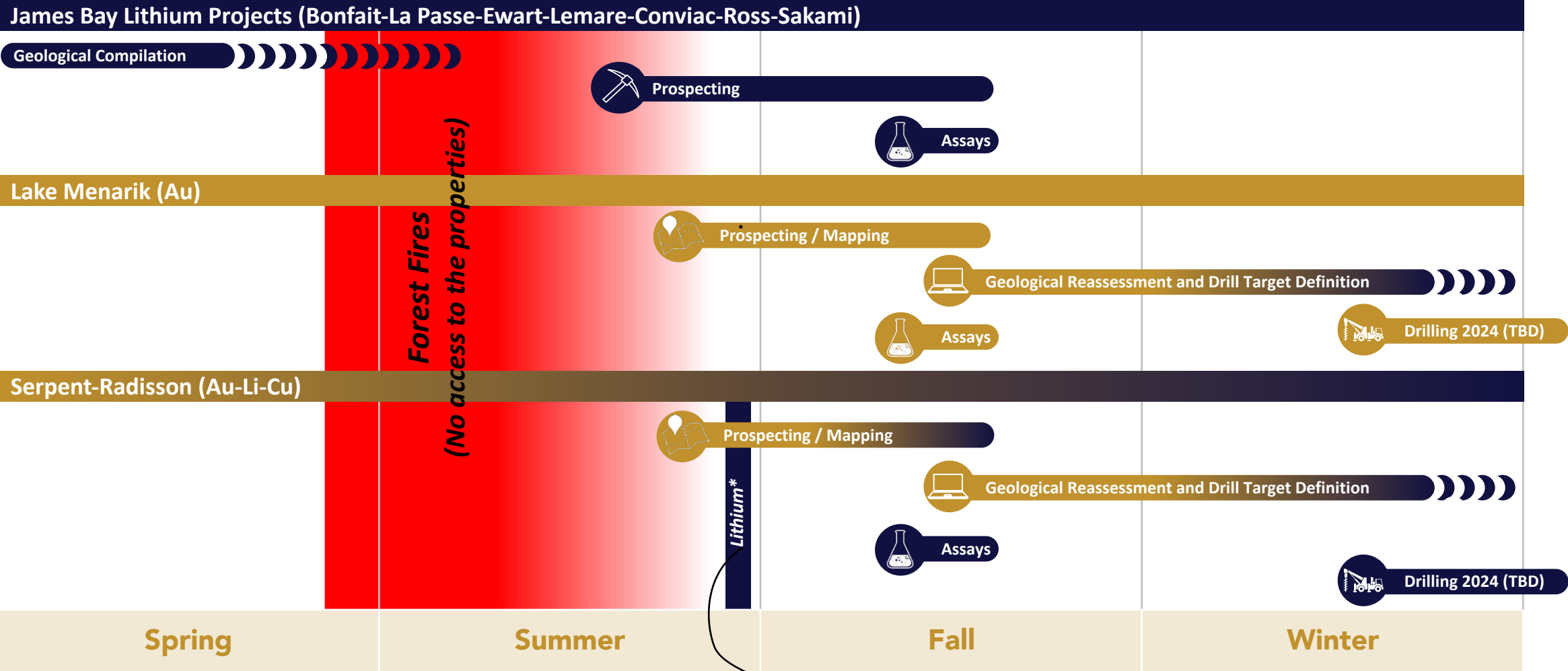


Catalysts (mid-2023 to early 2024)

■ : CSM (Li) Projects

■ : Gold Projects

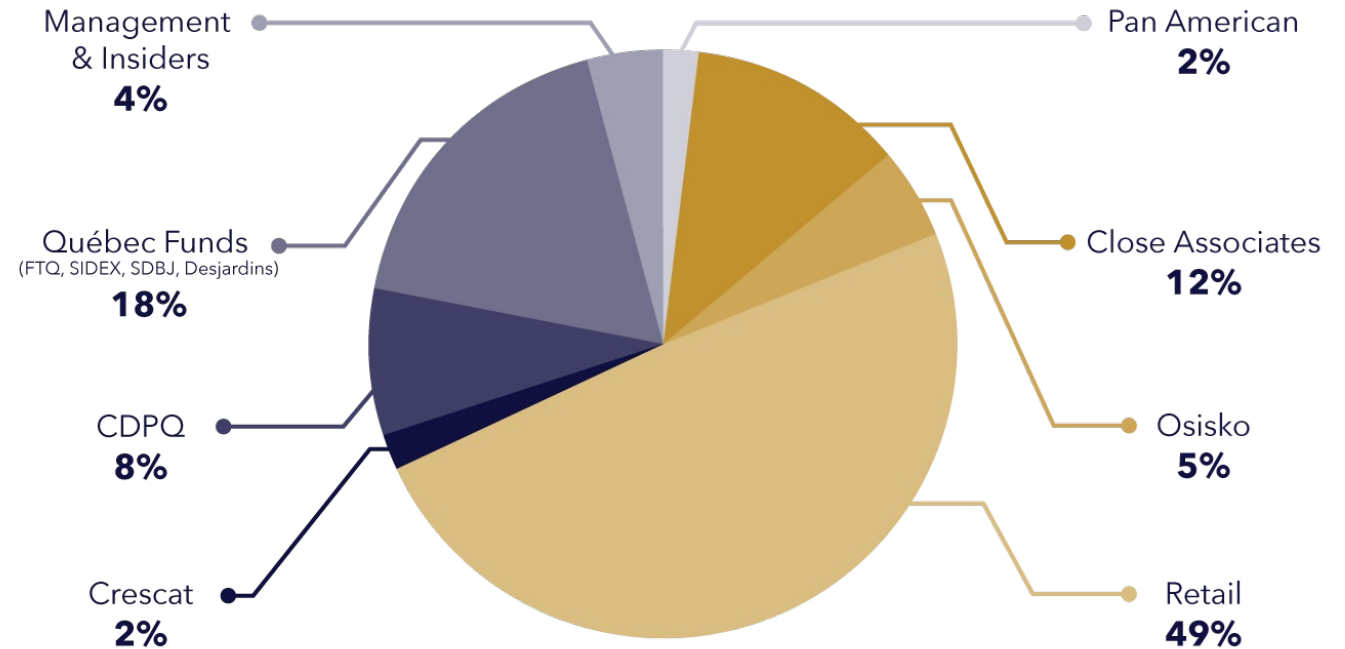
TBD: To Be Determined



*Lithium discovery (News release dated September 13, 2023)

Share Capital and Financial Partners

CAPITALIZATION	
Shares outstanding	60.86 million
Warrants	0 million
Options (\$0.54-0.94)	1.89 million
Fully diluted shares outstanding	62.75 million
Treasury (as of September 1, 2023)	\$6.2 million



FINANCIAL PARTNERS



STRONG SUPPORT FROM LONG-TERM VALUE FOCUSED SHAREHOLDERS



HARFANG
— **EXPLORATION INC.** —

For further information please contact:

IAN CAMPBELL

President and CEO

+1-647-680-3820

icampbell@harfangexploration.com

FRANÇOIS HUOT

Vice-President, Exploration

+1-581-996-2135

fhuot@harfangexploration.com

CORPORATE ADDRESS

1100, av. des Canadiens-de-Montréal, suite 300,
Montréal (Québec) H3B 2S2

TSXV:HAR