



HARFANG

— **EXPLORATION INC.** —

Corporate Presentation | March 2024

TSXV : HAR



FORWARD-LOOKING STATEMENTS

This presentation contains forward-looking information within the meaning of applicable securities legislation, which reflects the Corporation's current expectations regarding future events. Such statements can be recognized by the terms "forecast", "anticipate", "consider", "foresee" and other terms and similar expressions. In this presentation there is forward-looking information based on a number of assumptions and subject to a number of risks and uncertainties, many of which are beyond the Corporation's control that could cause actual results and events to differ materially from those that are disclosed in or implied by such forward-looking information. Such risks and uncertainties include, but are not limited to, the factors discussed under "Risk Factors" in Section 16 of the Company's Management Discussion and Analysis filed on SEDAR at www.sedar.com. Any forward-looking information included in this presentation is based only on information currently available to the Corporation and speaks only as of the date on which it is made. Except as required by applicable securities laws, the Corporation assumes no obligation to update or revise any forward-looking information to reflect new circumstances or events.

TECHNICAL CONTENT

Technical content within this presentation concerning the Serpent-Radisson Project is derived from the technical report prepared for Harfang Exploration Inc. and LaSalle Exploration Corp. dated January 31, 2022 by GeoVector Management Inc. and from work completed by Harfang and LaSalle since the effective date of the technical report.

Technical content within this presentation concerning the Blakelock Project is derived from the technical report prepared for LaSalle Exploration Corp. dated September 30, 2019 by Geologica Groupe-Conseil Inc. and from work completed by LaSalle since the effective date of the technical report.

The technical reports are available at www.sedar.com under the profile of LaSalle Exploration Corp.

The technical information in this presentation has been prepared and approved by Ian Campbell, P.Geo, Advisor and Director at Harfang, a non-independent "qualified person" as defined by National Instrument 43-101 (NI 43-101) Standards of Disclosure for Mineral Exploration Projects.

► HARFANG: A Discovery Driven Exploration Company



- 1 Experienced Management and Board
Track record of success in exploration and business development
- 2 Strategy – Explore, Partner, Monetize Projects
Maximum exposure for shareholders
- 3 Tier 1 Jurisdiction
Eeyou Istchee James Bay and Abitibi districts of Québec and Ontario

- 4 Technically Driven Business Approach
Systematic and science driven, with boots on the ground
- 5 Strong Financial Position
Solid cash position (\$6.2 M, Sept. 1, 2023)
- 6 Commitment to Best Practices
Care and governance with our engagement, social licence and the environment

▶ Leadership Team: Success Driven Track Record



MANAGEMENT TEAM



Rick Breger
President & CEO



Ian Campbell
Advisor & Director



Coming Soon
VP, Exploration



Yvon Robert
CFO



Marc Pothier
Corporate Secretary & Legal
Advisor

BOARD OF DIRECTORS



Jean-Pierre Janson
Chair

- Chairman of Midland Exploration
- Former Managing Director at Richardson GMP Limited



Karen Rees
Chair of Compensation and
Governance

- Former VP Exploration/Secretary at Temex Resources Corp.
- 30+ years experience in the mineral exploration industry



Dan Innes

- Geologist and Former CEO of Lake Shore Gold Corp.
- 35+ years experience in the mineral exploration industry



Ian Campbell

- Former President and CEO of Temex Resources
- 35+ years experience in the mineral exploration industry



Vincent Dubé-Bourgeois
Chair of Audit Committee

- President and Director of Earthlabs
- Founder, Director and CEO of Goldspot Discoveries Corp., now owned by ALS



Sylvie Prud'homme

- Geologist and former Manager, Investor Relations for Osisko Mining Corporation
- 35+ years experience in the mineral exploration industry

► Gold & Critically Strategic Minerals (CSM)

HIGH GRADE GOLD PROJECTS (PQ & ON)

Serpent-Radisson (Au-Cu-Li)

- District-scale gold endowment with >50 showings
- Multiple gold-bearing structures
- Spodumene discovery in Li-Cs-Ta pegmatite

Lake Menarik (Au)

- Monzonite-hosted high-grade gold
- Grab samples to 1,918 g/t Au
- Drilling includes 1.15 g/t Au over 47.0 m

Egan (Au)

- Central to Timmins-Kirkland Lake-Matachewan mining camps
- High-grade gold discovery in syenite

Blakelock (Au)

- 15 kilometres along the Casa Berardi trend
- Drilling results include 10.9 g/t Au over 10.25 m and 11.53 g/t Au over 6.0 m

CSM PROJECTS (PQ)

La Passe (Li, Au)

- Sedimentary rocks and peraluminous pegmatite dykes along the La Grande-Opinaca contact

Ewart (Li)

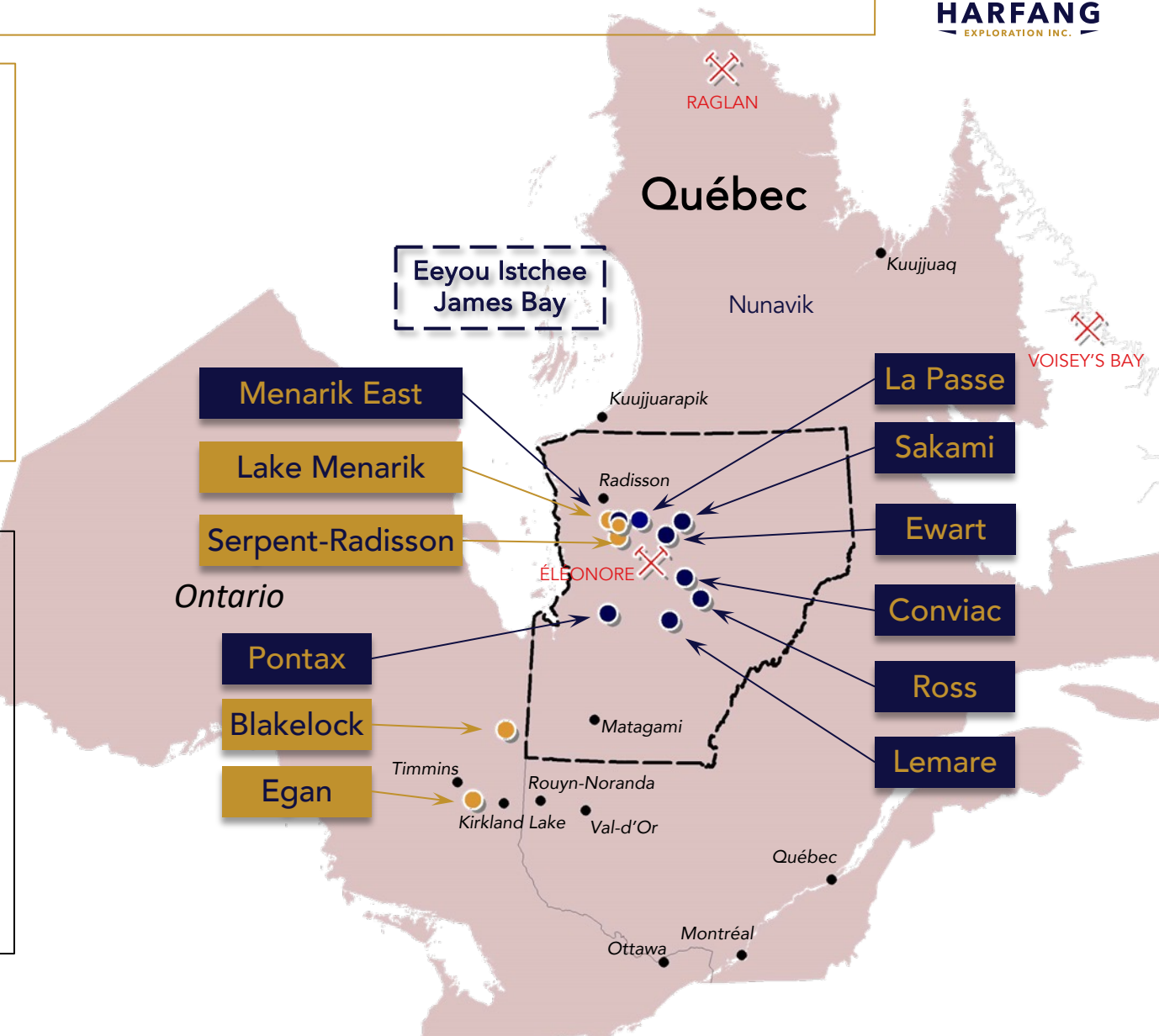
- Banded peraluminous pegmatite dykes enriched in beryllium

Pontax (Li, Ta, Au)

- Li-FT Power earning an initial 51% by spending \$3 M (July 2022)
- Highly prospective for lithium and tantalum-bearing pegmatites
- Greenstone belt prospective for gold along the Billy-Diamond Highway

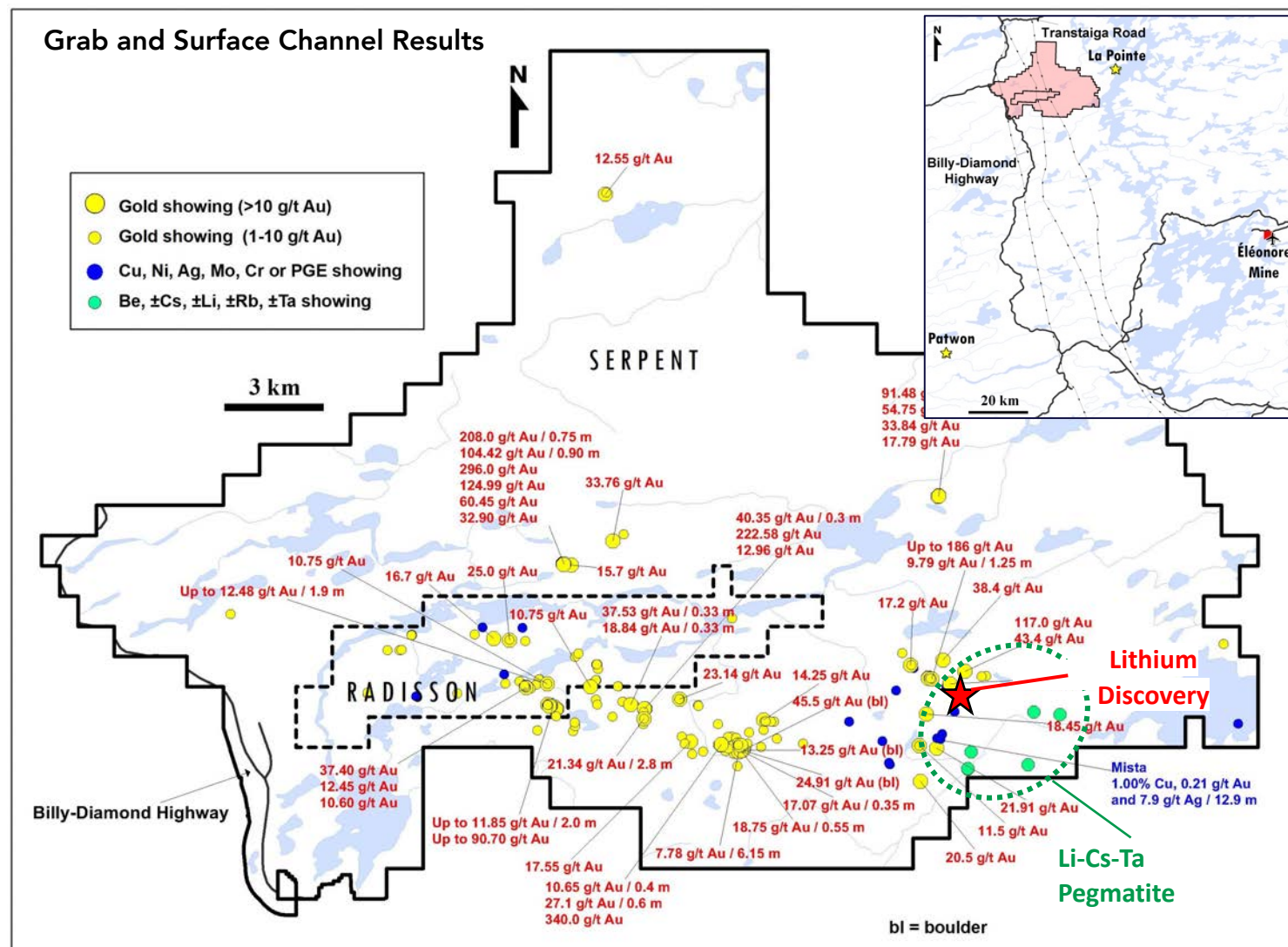
Menarik Est (Cr, Ni, PGE, Au)

- Non-compliant Cr-PGE resource in a mafic-ultramafic complex
- Multiple Ni, PGE and Au showings
- 1.88% Ni, 0.35% Cu over 4.5 m (drill hole)



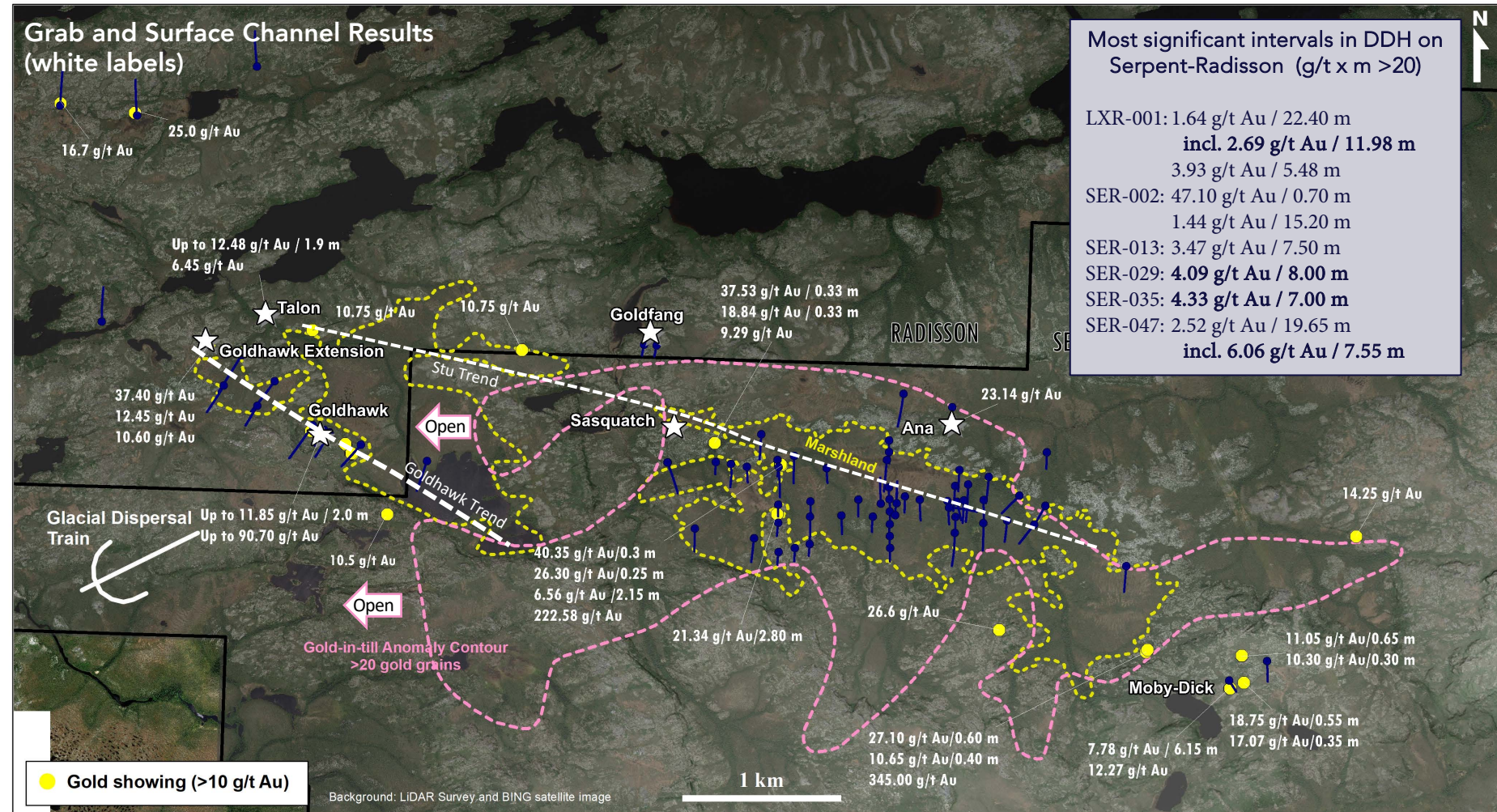
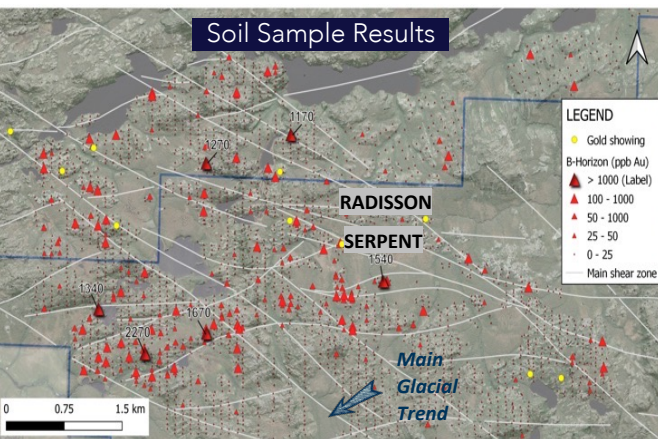
► Serpent-Radisson: Developing a District-Scale Gold Play

- Discovery of 50+ gold showings
 - ✓ Up to 340 g/t Au (grab), 7.78 g/t Au over 6.15 m (channel), and 2.52 g/t Au over 19.65 m and 1.64 g/t Au over 22.40 m (DDH)
- Numerous high-grade gold occurrences along structural corridors stretching over 20 km (nearly half the Val-d'Or mining camp)
- Discovery of spodumene and tantalite in fertile and complex pegmatites in the eastern part of the property
 - ✓ Several occurrences of spodumene scattered over a 1 km distance, analytical results pending
 - ✓ Boulder field with spodumene-bearing pegmatite floats
- Mista showing (Cu, Au, Ag, ±Bi, ±Te)
 - ✓ 1.00% Cu, 0.21 g/t Au and 7.9 g/t Ag over 12.9 m in an arenite/quartzite-hosted quartz stockwork
 - ✓ Copper mineralization associated with a 650 m-long chargeability anomaly, no drilling yet
- Large part of the combined property remains unexplored
 - ✓ 988 claims (50,843 ha), 100% Harfang

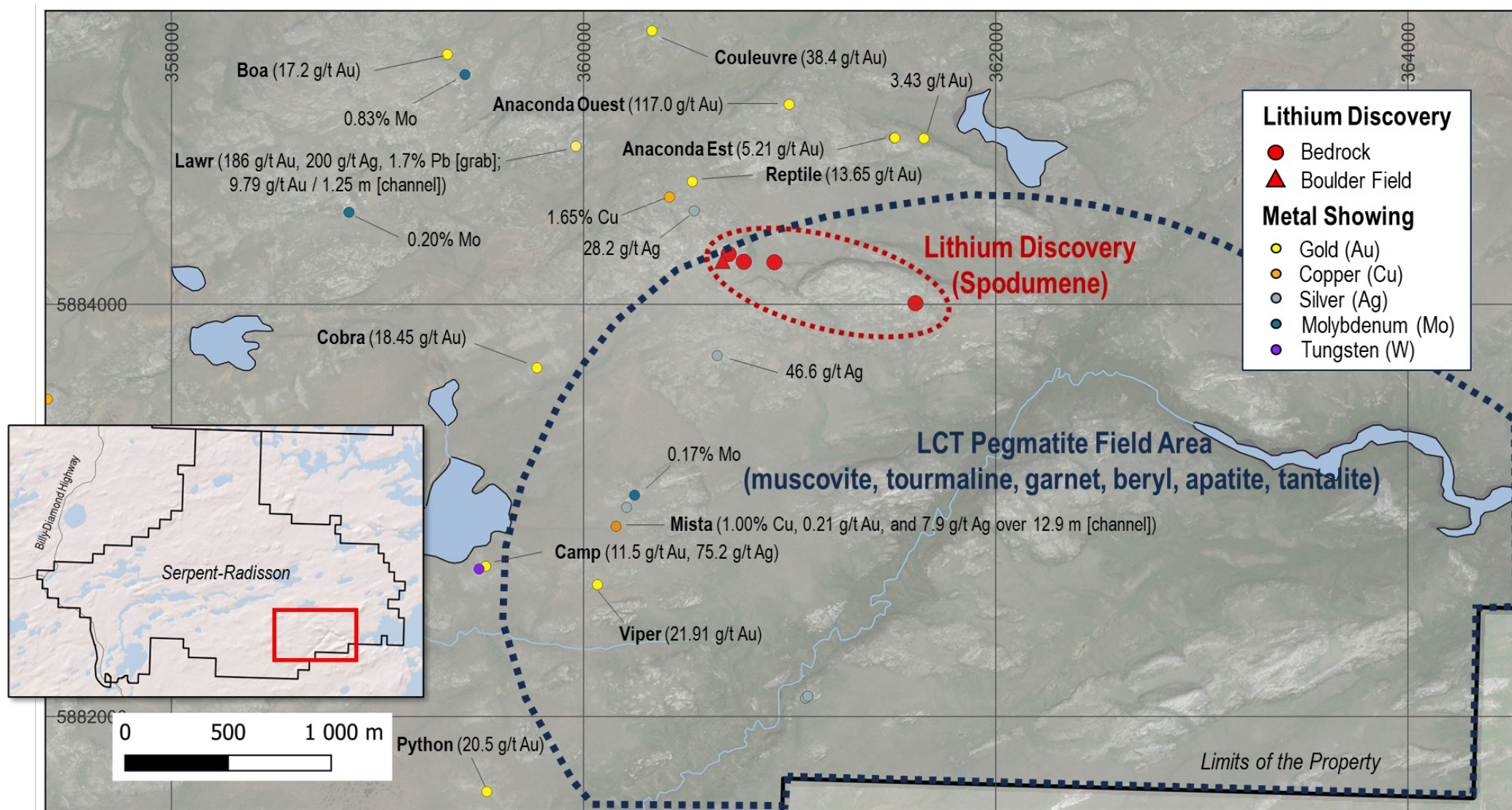


Serpent-Radisson: Gold Zones Confirmed by Drilling

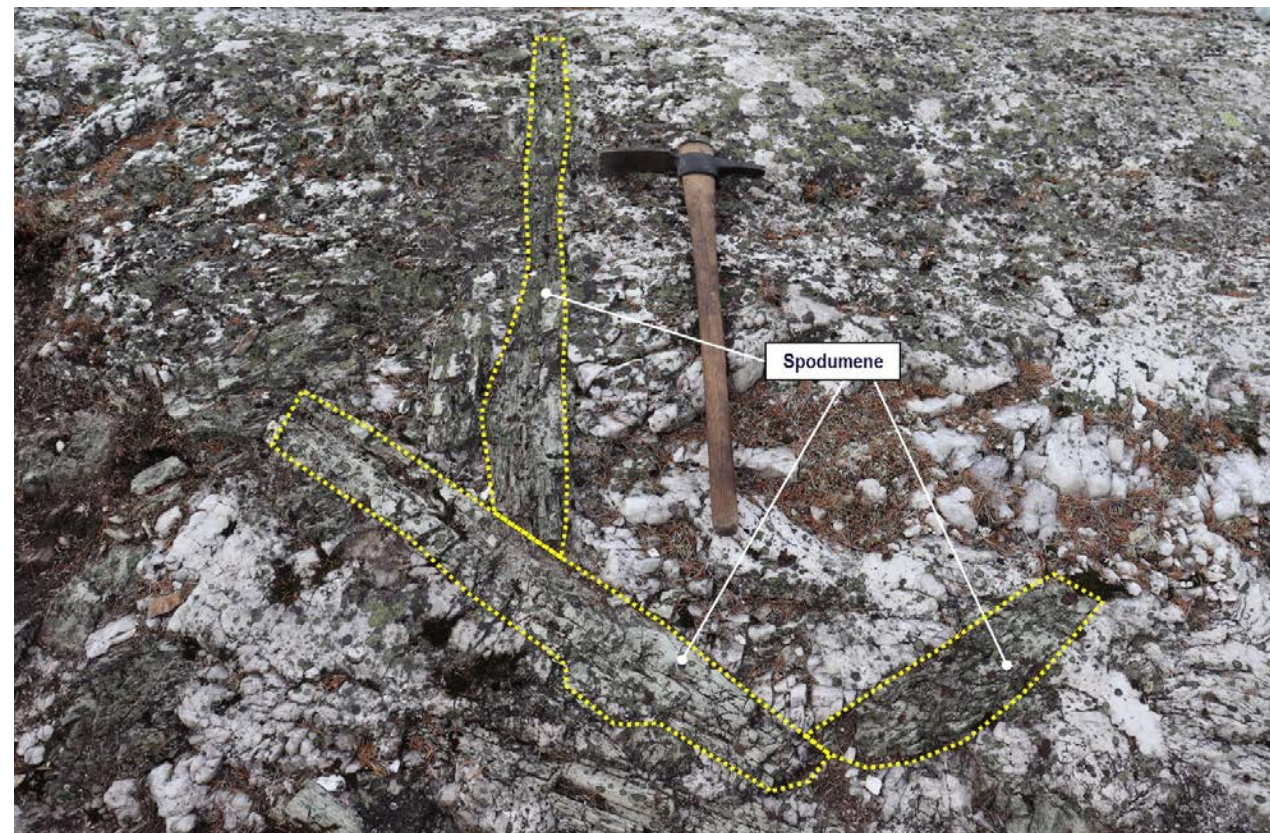
- Significant gold intervals were hit by drill holes up-ice from the gold-in-till anomaly (pink stippled contour on the figure)
- The till and soil anomalies may have different bedrock sources for gold (e.g., the Stu and Goldhawk trends and NE-SW shear zones)
- The till and soil anomalies remain open toward the southwest and west (former Radisson property)
- Total drilled: 14,949 m (76 holes)



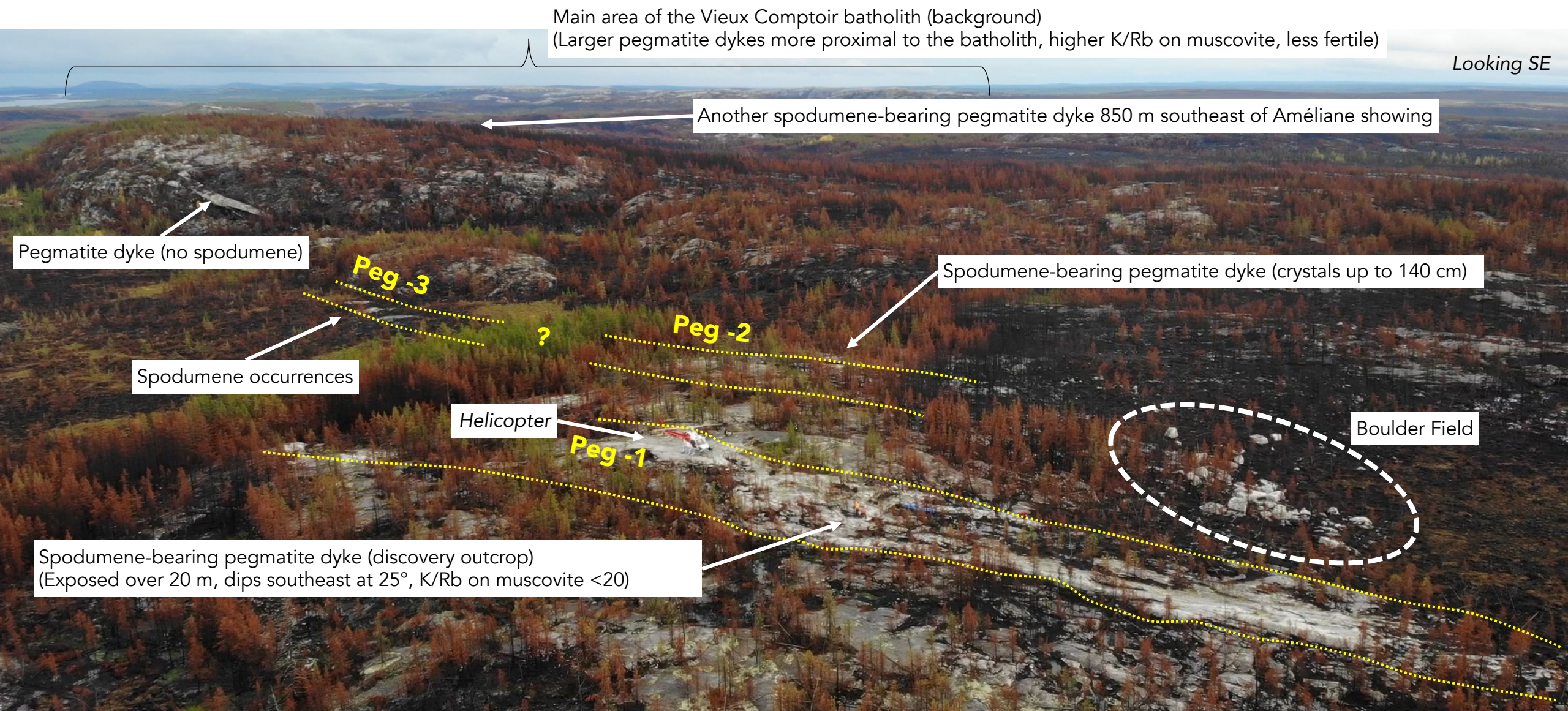
Serpent-Radisson: Polymetallic & Lithium Discovery



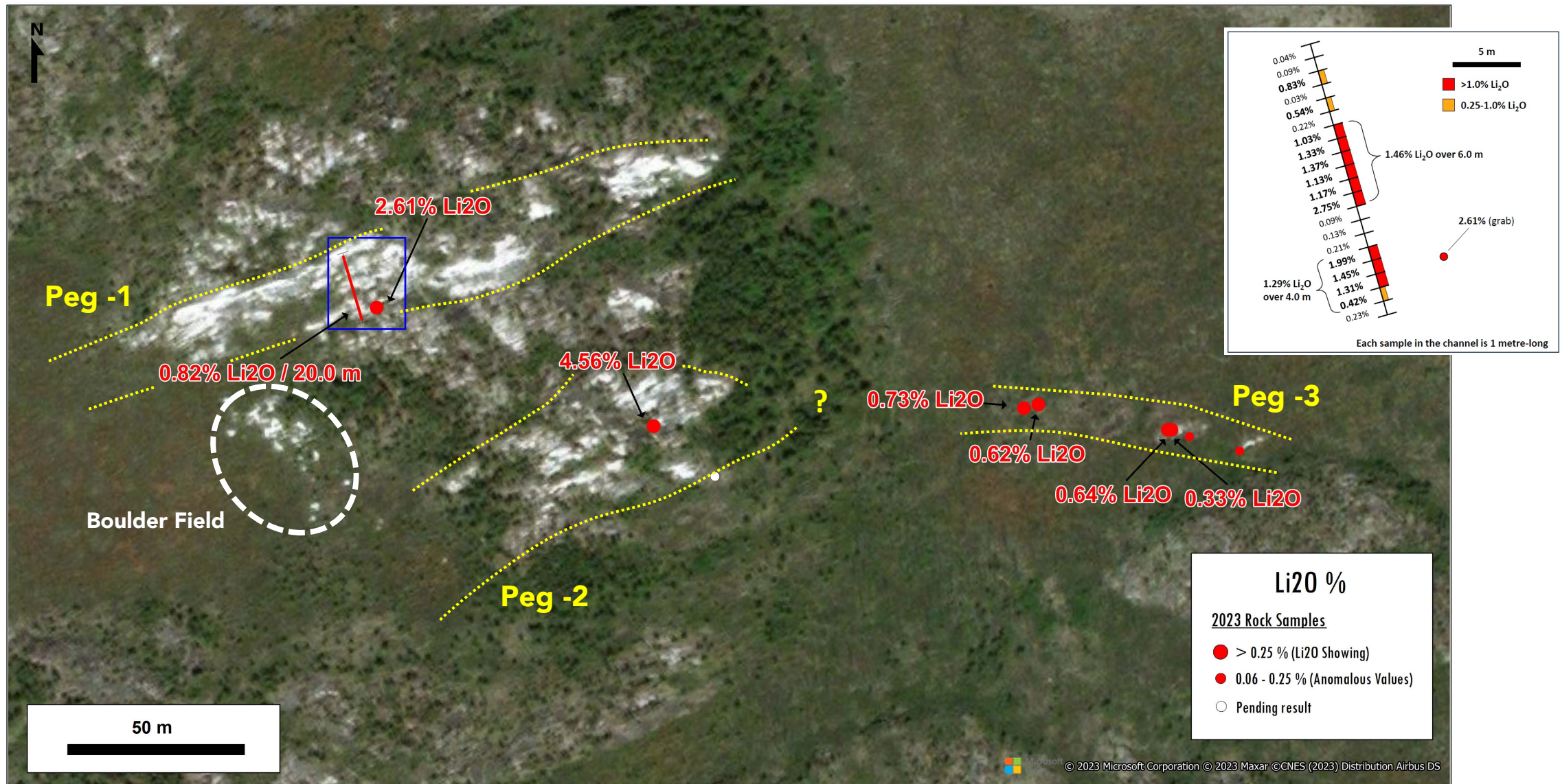
► Serpent-Radisson: Li Discovery – Presence of Spodumene



► Serpent-Radisson: Améliane Showing

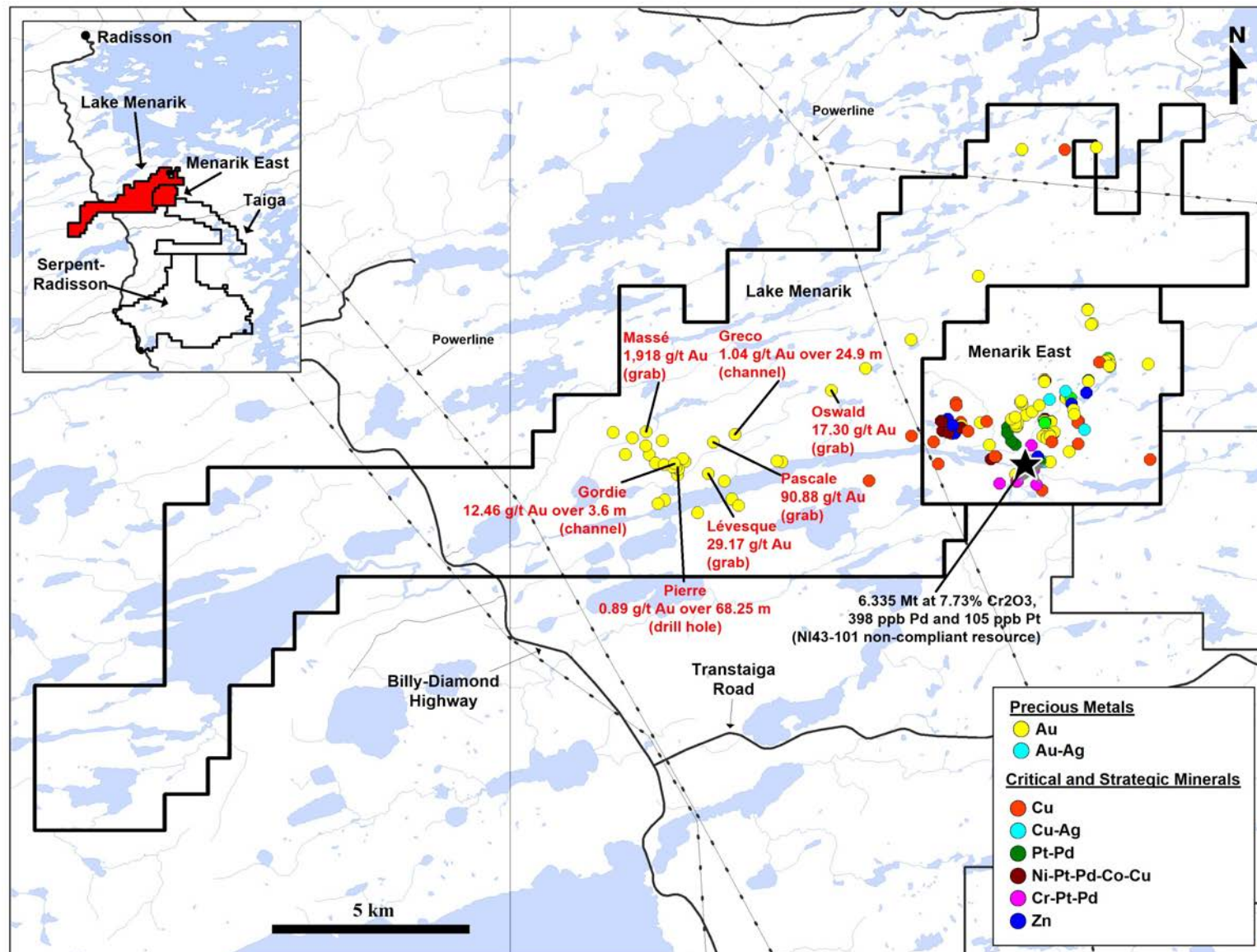


► Serpent-Radisson: Améliane Showing (con't)



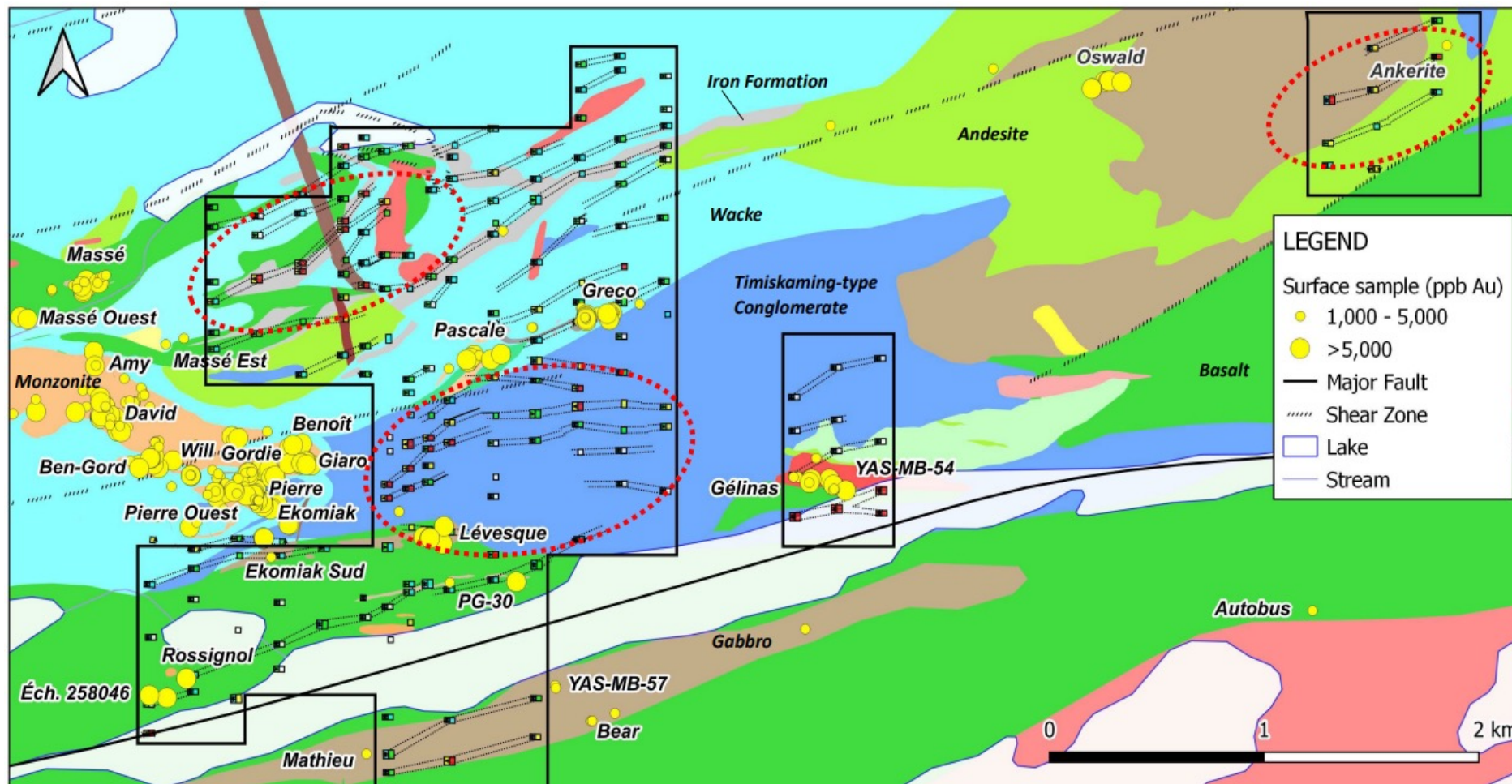
► Lac Menarik: High-Grade Gold & Lithium (CSM)

- Lake Menarik (304 claims; 15,627 ha; 100% Harfang)
 - ✓ Gold in monzonite and volcano-sedimentary rocks
 - ✓ Strong structural control at greenschist facies
 - ✓ Massive ankerite alteration in extensive shear zones
- Menarik East (64 claims; 3,289 ha; 100% Harfang)
 - ✓ Chromium and nickel-copper with platinum-group elements in the Menarik mafic-ultramafic Complex
 - ✓ High-grade gold and silver in shear zone-hosted tonalite and gabbro
- Detailed heliborne magnetic survey on both properties (December 2022)
- New drill and IP results at Lake Menarik (Winter 2023)



▶ Lake Menarik: Geologic Setting

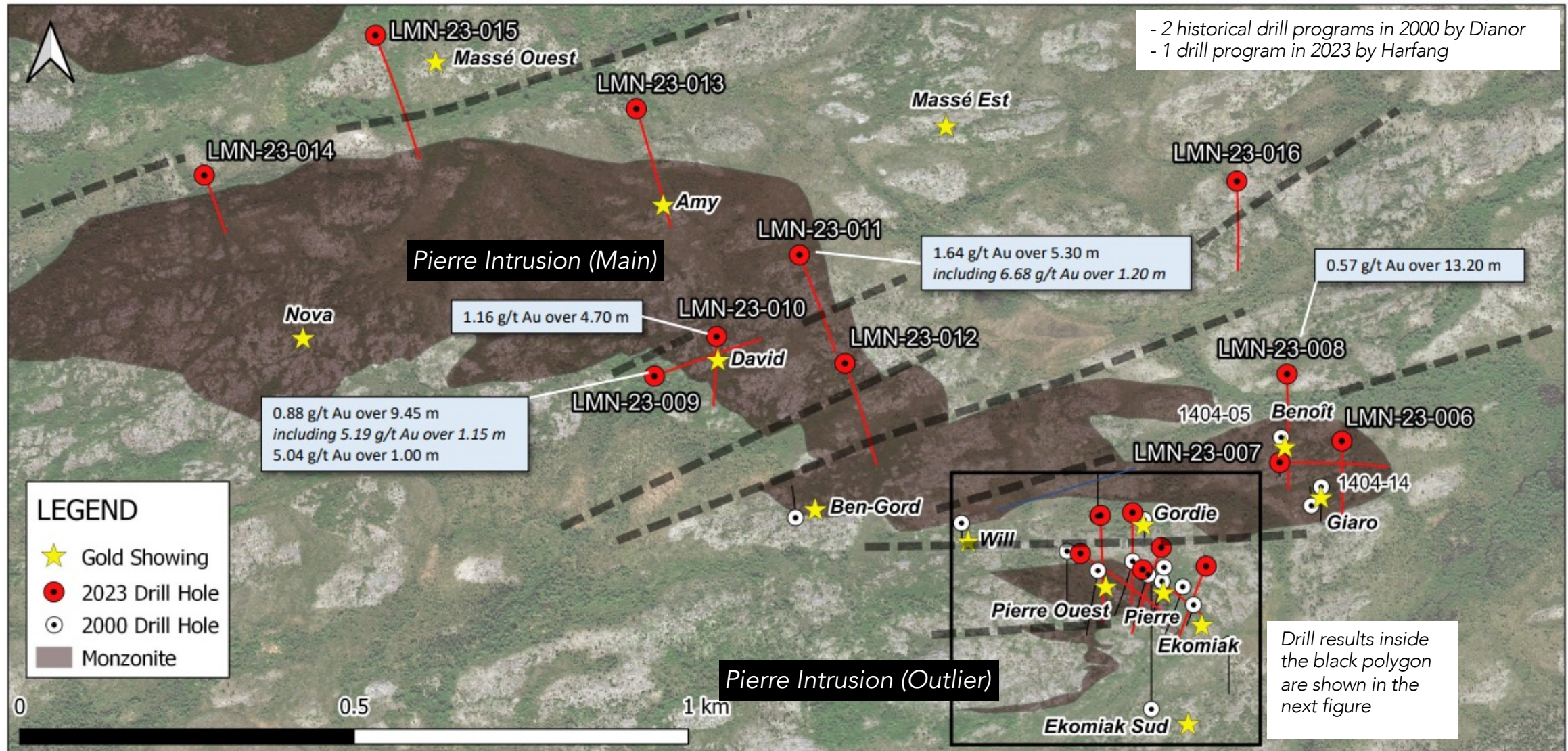
- Highly prospective geology
 - ✓ Reminiscent of that of Timmins, Kirkland Lake and Matachewan gold camps
 - ✓ Differentiated monzonite, polymictic conglomerate, lamprophyres, well-preserved volcano-sedimentary sequence (mainly greenschist facies)
- Multiple high-grade gold occurrences
 - ✓ Grabs up to 1,918 g/t Au (62 oz/t Au)
 - ✓ Channels up to 12.46 g/t Au and 25.5 g/t Ag over 3.60 m
 - ✓ DDH intersections at 1.15 g/t Au over 47.0 m and 0.89 g/t Au over 68.25 m
- Extensive shear zones with massive ankerite alteration
 - ✓ Up to 700 m long and 50 m wide
- Winter Program 2023
 - ✓ Drilling yielded encouraging results
 - ✓ Several prospective targets defined by the new IP axes (red stippled ellipses on the figure)



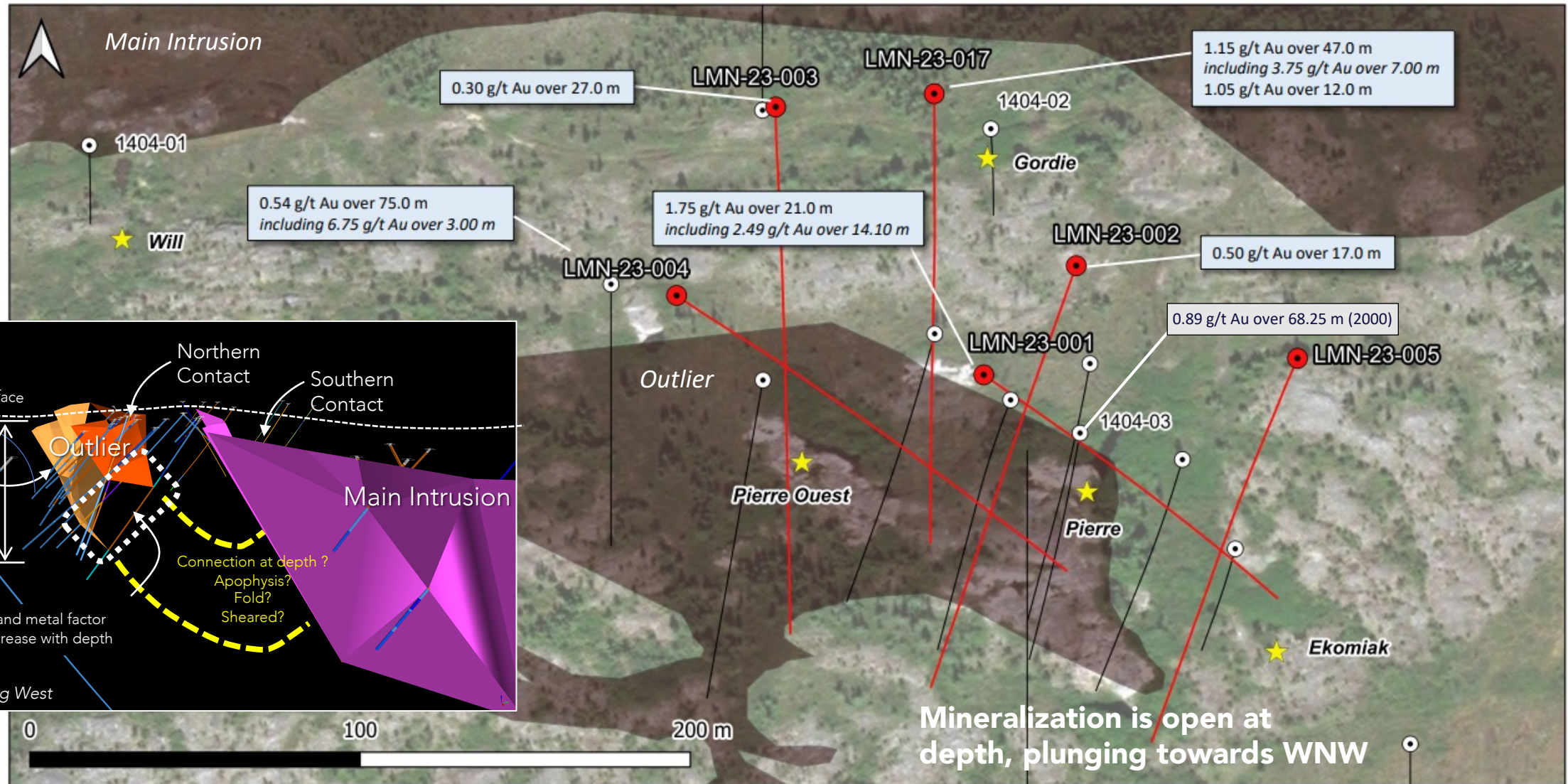
Massé: 1,918 g/t Au (grab)
 Pierre: 0.89 g/t Au over 68.25 m (DDH)
 Gordie: 12.46 g/t Au over 3.60 m (channel)
 Ekomiak: 61.5 g/t Au (grab)

Greco: 1.04 g/t Au over 24.9 m (channel)
 Pascale: 90.88 g/t Au (grab)
 Lévesque: 29.17 (grab)
 Oswald: 17.30 g/t Au, 217 g/t Ag and 0.61% Pb (grab)

▶ Lake Menarik: Drill Results – Winter 2023 (General View)



► Lake Menarik: Drill Results – Winter 2023 (Pierre Area)

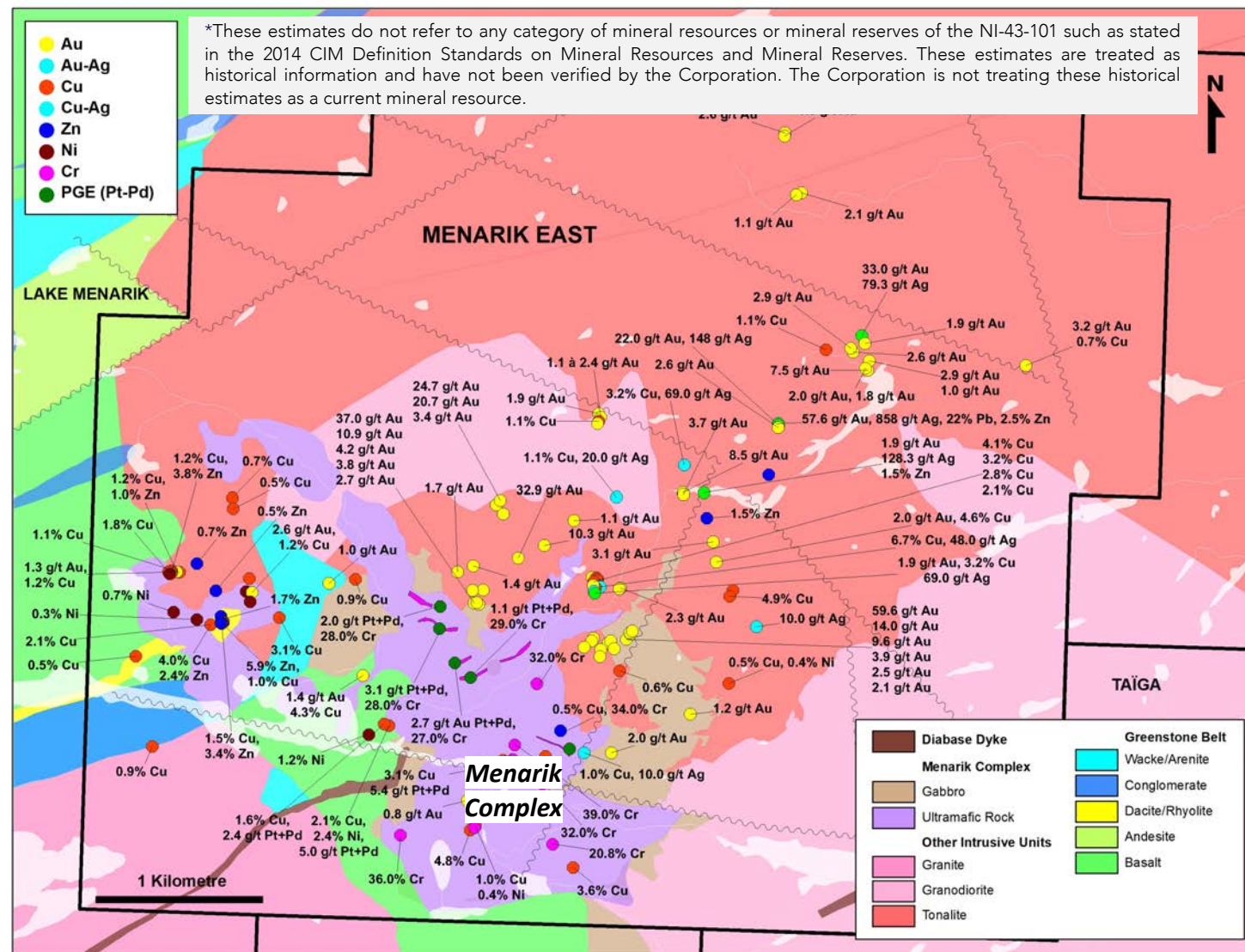


▶ Menarik East: Polymetallic Play for CSMs

■ Mafic-Ultramafic Menarik Complex

- ✓ Largest historic chromium resource* in northern Québec (not NI43-101 compliant): 6.335 Mt @ 7.73% Cr₂O₃, 398 ppb Pd and 105 ppb Pt
- ✓ Platinum-group elements in chromites and nickel sulphides
- ✓ Up to 1.88% Ni and 0.35% Cu over 4.5 m
- Structurally-controlled orogenic Au-Ag-As hosted in intrusive rocks
- ✓ Up to 57.6 g/t Au, 858 g/t Ag, 22% Pb, 2.5% Zn and 18% As

Typical arsenopyrite and gold-rich samples from shear zones around the Menarik Complex (up to 57.6 g/t Au, 858 g/t Ag, 22% Pb, 2.5% Zn and 18% As)



▶ Eeyou Istchee James Bay: Hot Spot for Lithium



- Lithium – leading the green revolution toward a sustainable and socially responsible conversion to electric energy
- Rapidly developing North American lithium district and infrastructure
- 5 lithium deposits defined (Corvette, James Bay Lithium, Whabouchi, Moblan, Rose)
 - Corvette: Inferred mineral resources estimate of 109.2 Mt at 1.42% Li₂O, one of the top 10 largest lithium pegmatite resources in the world
- Entry of Major Players into the region underscores the level of interest:
 - Transaction between Ford Motor Co. and Nemaska Lithium (Whabouchi Mine) for supply of lithium hydroxide for 11 years in May
 - Transactions involving Rio Tinto with Midland Exploration and Azimut Exploration
 - Private placement (C\$109 M) by Albemarle into Patriot Battery Metals
- Recent advancements at Corvette, Cancet, Adina, Lemare (Critical Elements Lithium Corp.), Mirage, Mia, Radis, Galinée, Trieste, Elmer Est, Elrond and Serpent-Radisson illustrate the unexplored nature of properties in areas previously prospected for gold
- James Bay represents one of the largest untested land packages – several drill programs currently active for lithium
- Harfang is one of the largest land holders with 11 projects distributed throughout the region
 - New lithium discovery at Serpent-Radisson (September 2023)

► Eeyou Istchee James Bay: Lithium Exposure and Deposits

- One of the largest land holders with 11 projects distributed throughout Eeyou Istchee James Bay
- Demonstrated lithium potential on Serpent-Radisson and Pontax Properties
 - ✓ New lithium discovery with several spodumene occurrences scattered along a 1 km distance (outcrops and boulder field) at Serpent-Radisson
- Aggressive acquisition by staking; target generation driven by:
 - ✓ Geology – documented pegmatites, favourable host rocks, near limits of sub-provinces
 - ✓ Spatial regression analyses of 13,400+ lake sediments; enhances the signal of geochemical anomalies relative to other signals (false anomalies) [Based on CONSOREM methodology (Trépanier, 2006; 2007)]
 - ✓ Modelling of existing deposits with spatial regression



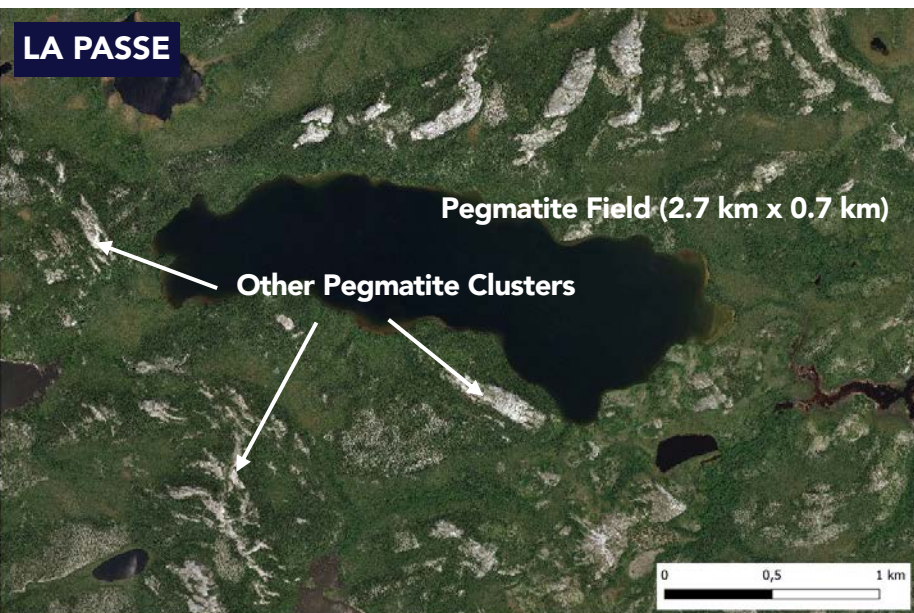
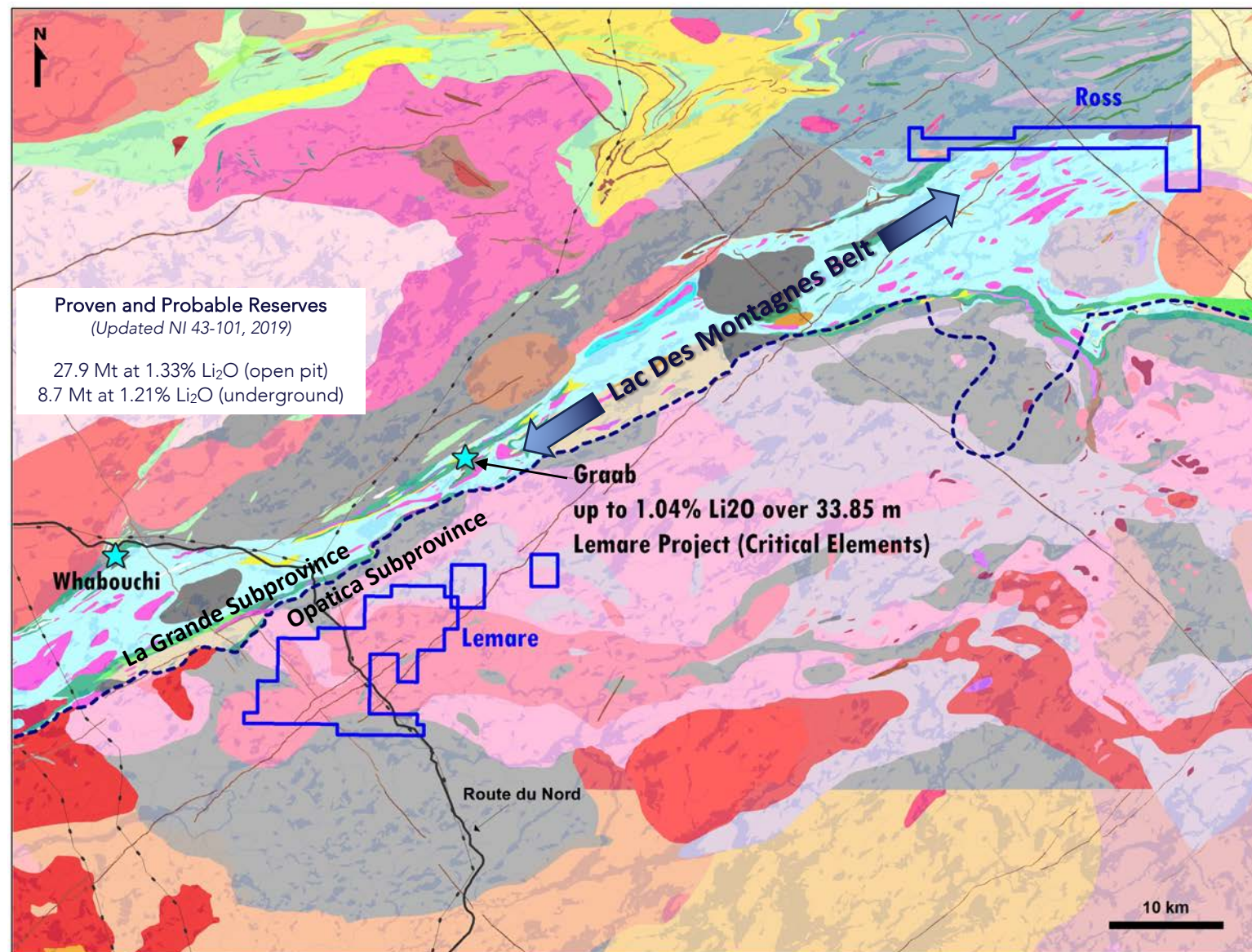
Target Generation for Lithium: Lemare, Ross and La Passe

LEMARE

- ✓ 7 outstanding lithium residual anomalies, 4 of which are ≥ 99.5 th percentile
- ✓ 22 km southeast of the Whabouchi lithium deposit; easily accessible by the Route du Nord all-seasons gravel road

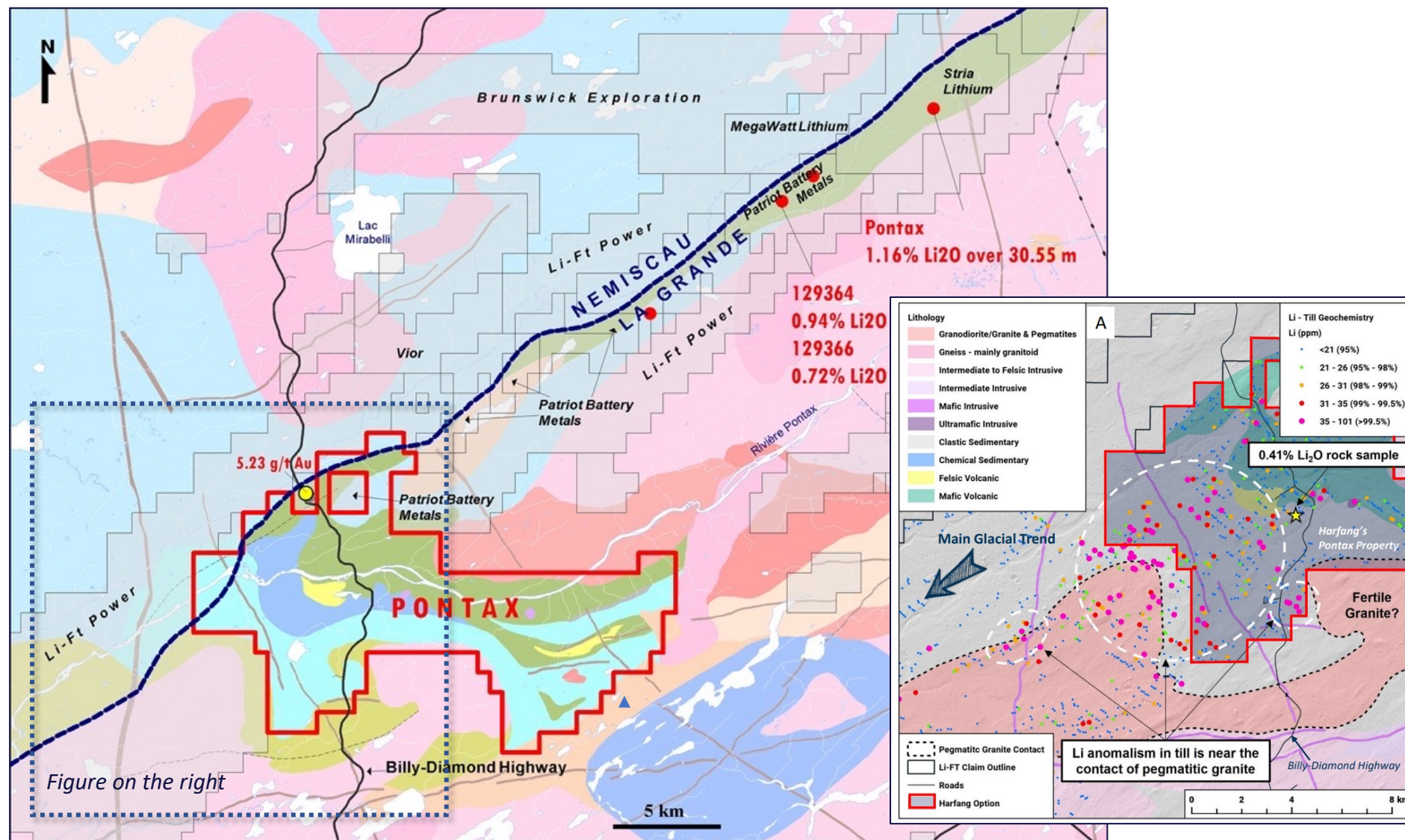
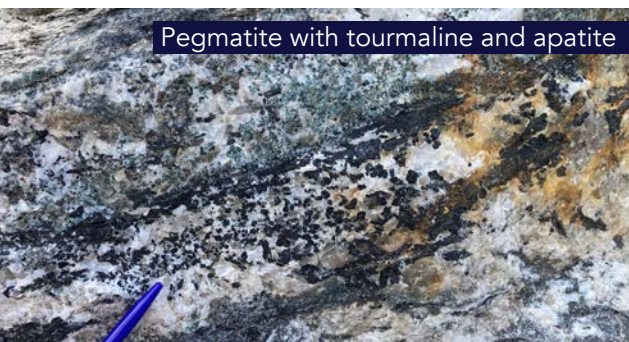
LA PASSE

- ✓ Abundant and extensive pegmatite dykes
- ✓ Favourable mineralogy: muscovite, tourmaline, garnet, apatite, and beryl



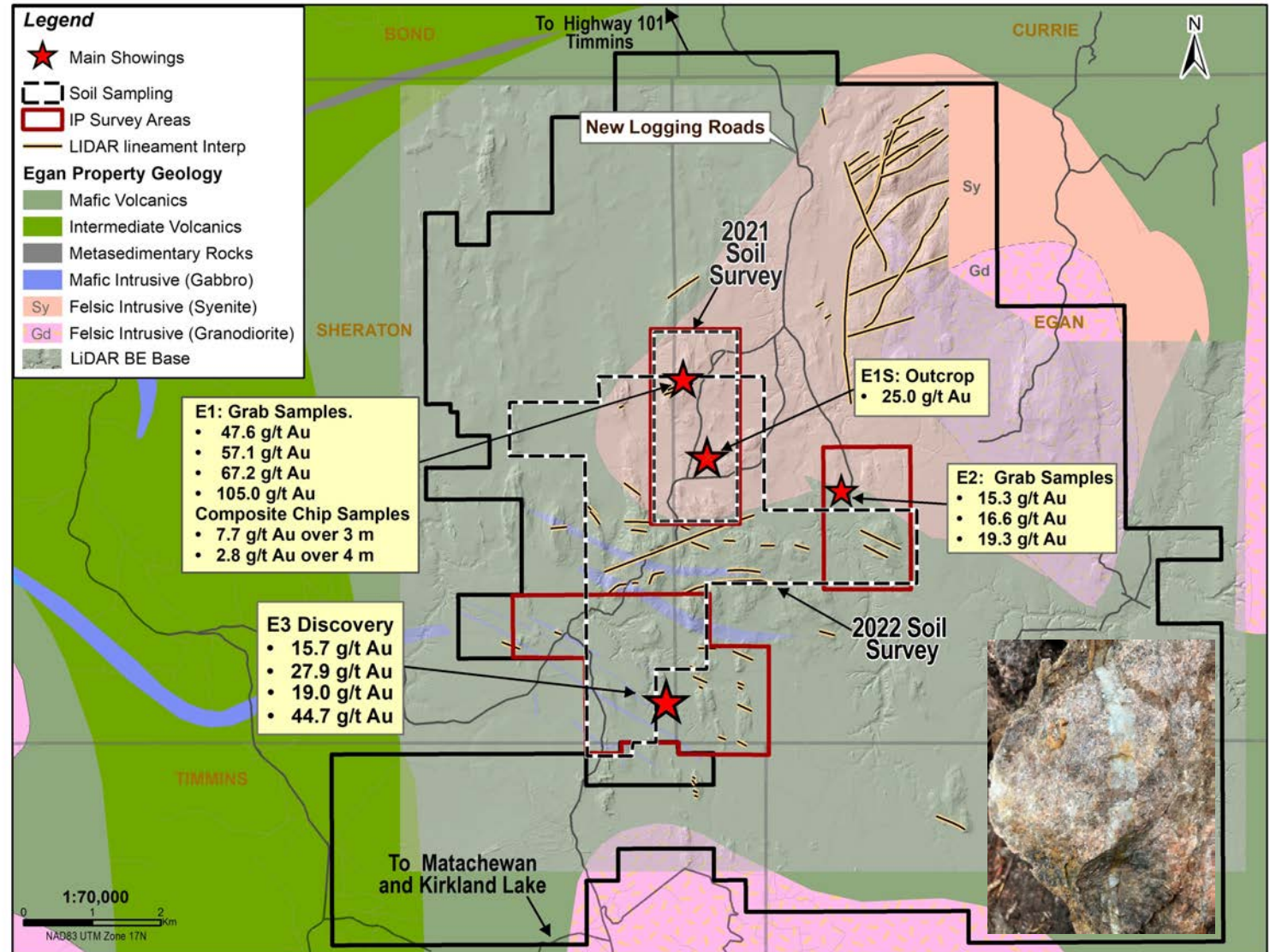
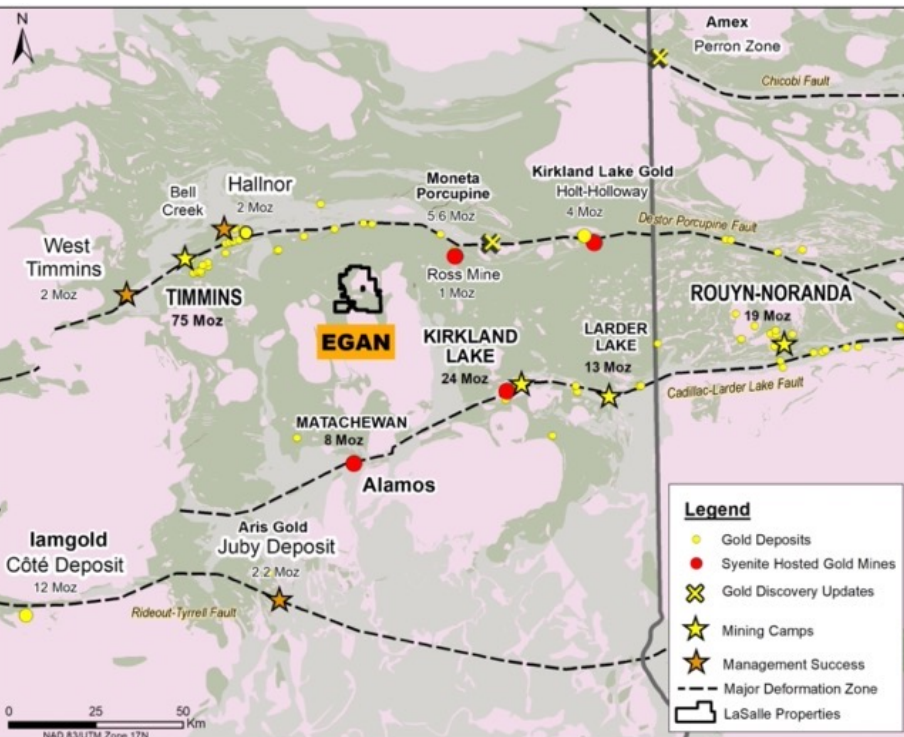
► Pontax: Under Option to Li-FT Power

- Discovery of a lithium showing (0.41 Li₂O%) and a Li-Cs-P-Nb-Ga-Mn-W-Mo ± Ta-Sn-Rb anomaly in till (8 km x 7.5 km) in Summer 2022
- Geological context highly favourable for lithium and gold
- 287 claims (15,323 ha), 100% Harfang
- Easy access along the Billy-Diamond Highway
- Li-FT Power can earn 70% with \$5 M exploration and cash payments of \$150,000 within 6 years



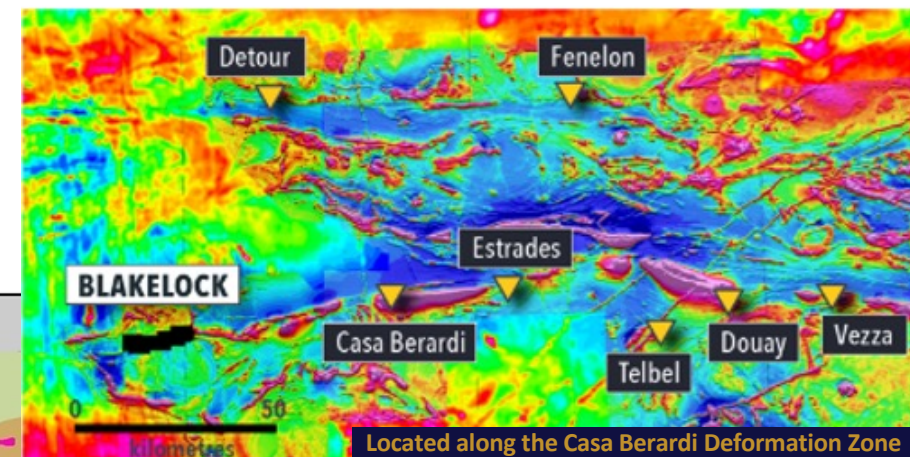
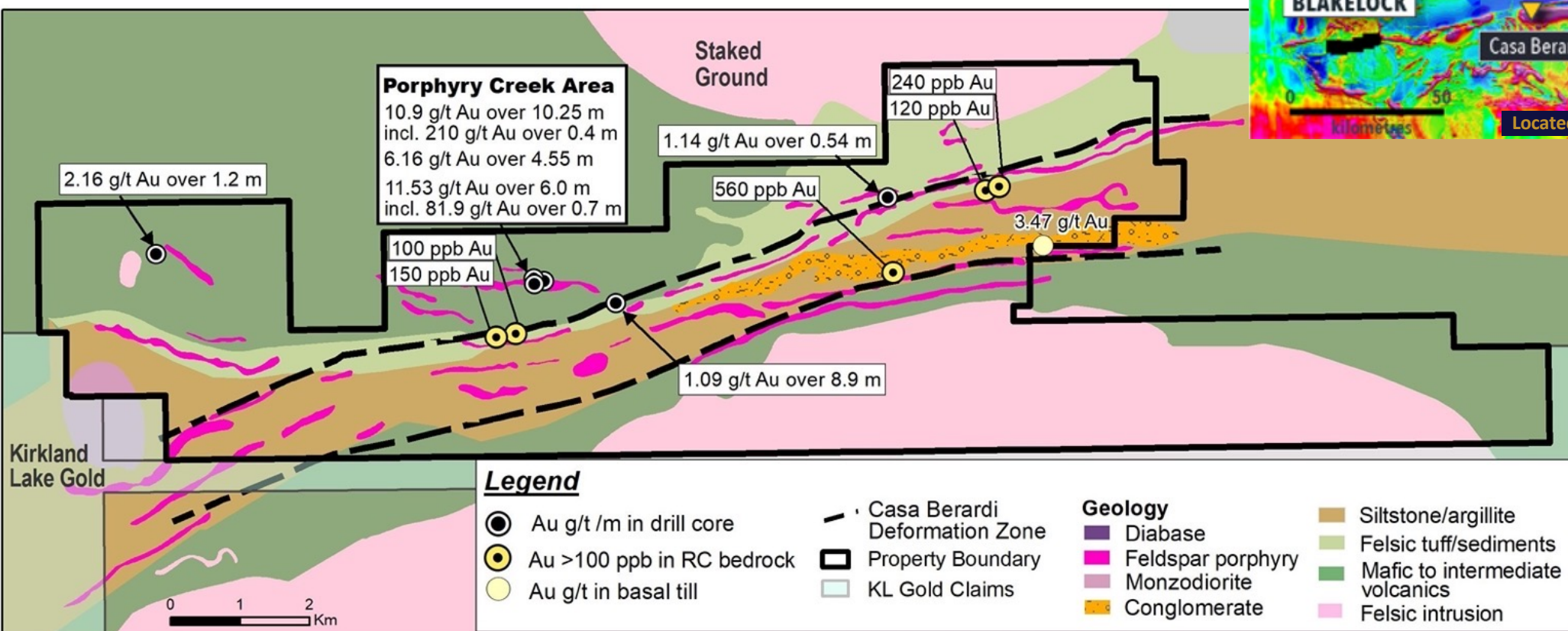
► Egan (ON): Syenite-hosted High-grade Gold

- Central to Timmins, Kirkland Lake and Matachewan gold camps
- Multiple high-grade gold occurrences at surface (up to 105 g/t Au; 7.7 g/t Au over 3 m)
- 454 claims (11,720 ha), 100% Harfang
- Good access along new logging roads
- Highly prospective and under-explored area



► Blakelock (ON): 15km on the Casa-Berardi Trend

- 340 claims (6,977 ha) strategically covering 15 km along the Casa-Berardi Deformation Zone (CBDZ)
- Historical drill intersections include 10.90 g/t Au and 97.5 g/t Ag over 10.25 m, and 6.16 g/t Au and 17.7 g/t Ag over 4.55 m
- Recently completed airborne magnetics and LiDAR surveys (2021)
- New interpretation demonstrates a highly prospective property-scale target zone



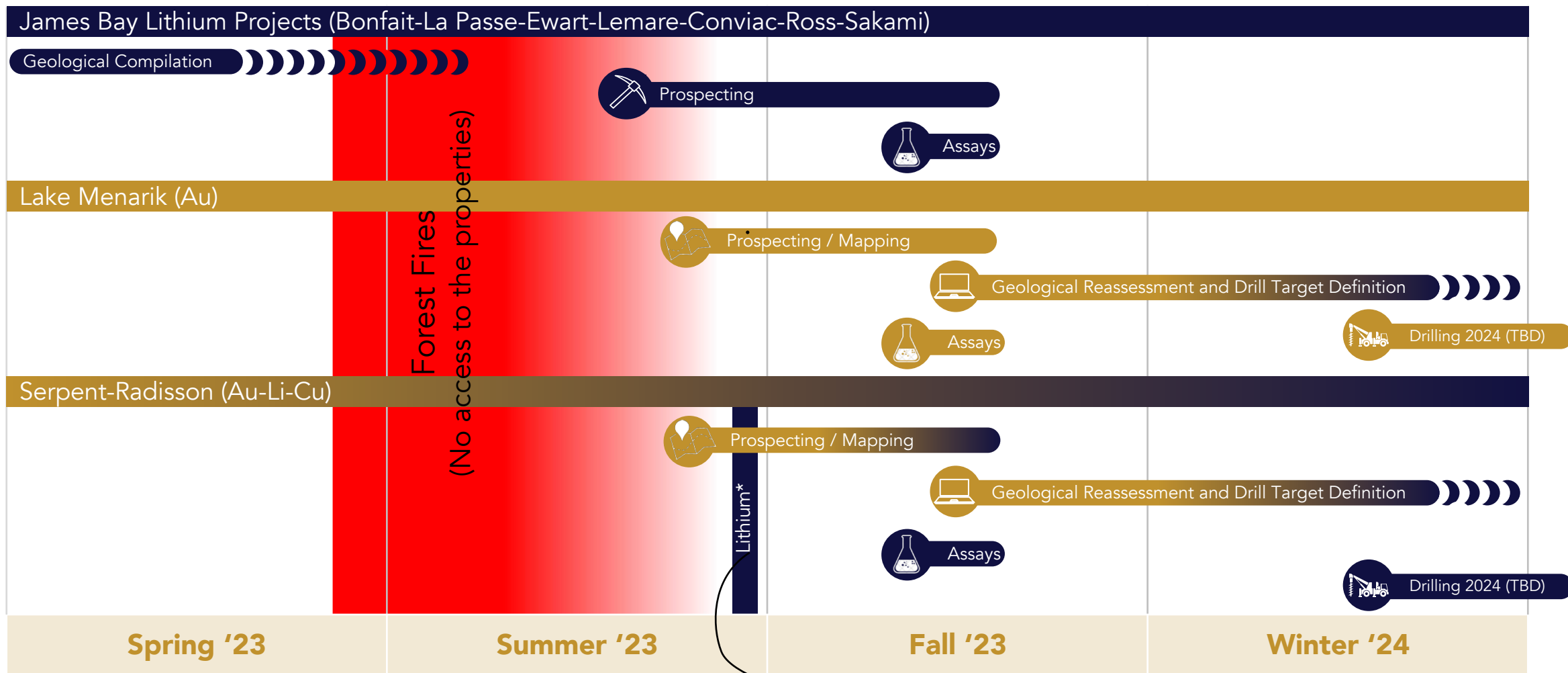
► Catalysts: 2023 & 2024



■ CSM (Li) Projects

■ Gold Projects

TBD: To Be Determined



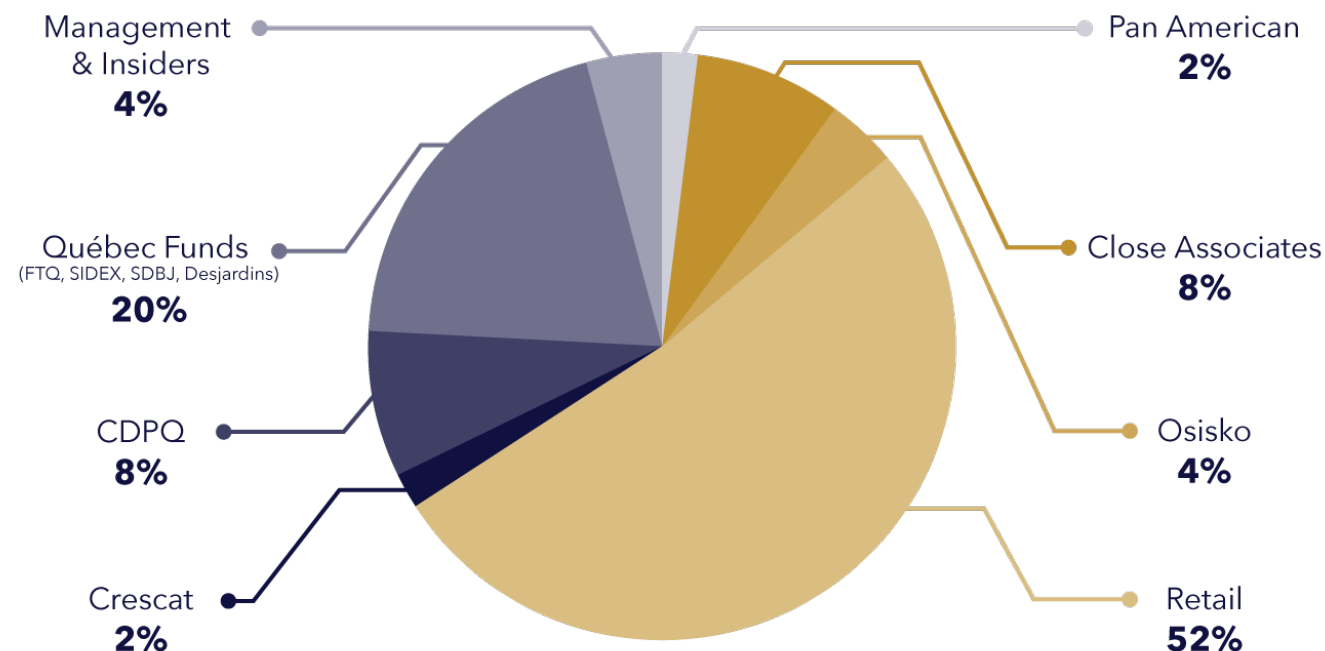
*Lithium discovery (see NR dated September 13, 2023)

► Share Capital & Financial Partners



CAPITALIZATION

| | |
|----------------------------------|---------------|
| Shares Outstanding | 64.17 million |
| Warrants | NIL |
| Options (\$0.15 to \$0.94) | 1.89 million |
| Fully Diluted Shares Outstanding | 66.06 million |
| Treasury (as at Feb. 7, 2024) | \$6.4 million |



STRONG SUPPORT FROM LONG-TERM VALUE FOCUSED SHAREHOLDERS





HARFANG
— **EXPLORATION INC.** —

For further information please contact:

RICK BREGER, P.Geo.

President & CEO

info@harfangexploration.com

CORPORATE ADDRESS

1100, av. des Canadiens-de-Montréal, suite 300,
Montréal (Québec) H3B 2S2

TSXV : HAR