



# HARFANG

EXPLORATION INC.

Corporate Presentation | Q1 2025

*A Multi-Commodity Discovery-Driven Exploration Company*

**TSXV : HAR**



## **FORWARD-LOOKING STATEMENTS**

This presentation contains forward-looking information within the meaning of applicable securities legislation, which reflects the Corporation's current expectations regarding future events. Such statements can be recognized by the terms "forecast", "anticipate", "consider", "foresee" and other terms and similar expressions. In this presentation there is forward-looking information based on 2024, assumptions and subject to 2024, risks and uncertainties, many of which are beyond the Corporation's control that could cause actual results and events to differ materially from those that are disclosed in or implied by such forward-looking information. Such risks and uncertainties include, but are not limited to, the factors discussed under "Risk Factors" in Section 16 of the Company's Management Discussion and Analysis filed on SEDAR+ at [www.sedarplus.ca](http://www.sedarplus.ca). Any forward-looking information included in this presentation is based only on information currently available to the Corporation and speaks only as of the date on which it is made. Except as required by applicable securities laws, the Corporation assumes no obligation to update or revise any forward-looking information to reflect new circumstances or events.

## **TECHNICAL CONTENT**

Technical content within this presentation concerning the Serpent Property is derived from the technical report prepared for Harfang Exploration Inc. dated September 12, 2024, by Harfang Exploration Inc. and GeoVector Management Inc. and from work completed by Harfang since the effective date of the technical report.

Technical content within this presentation concerning the Sky Lake Gold Project is derived from the technical report prepared for NewOrigin Gold Corp., dated April 6, 2023, by MAP GeoConsulting and from work completed by NewOrigin since the effective date of the technical report.

Technical content within this presentation concerning the Blakelock Property is derived from the technical report prepared for LaSalle Exploration Corp. dated September 30, 2019, by Geologica Groupe-Conseil Inc. and from work completed by Harfang and LaSalle since the effective date of the technical report.

The technical reports are available at [www.sedarplus.ca](http://www.sedarplus.ca).

The technical information in this presentation has been prepared and approved by Ludovic Bigot, P.Geo., VP Exploration of Harfang, a non-independent "qualified person" as defined by National Instrument 43-101 (NI 43-101) Standards of Disclosure for Mineral Exploration Projects.

# CAPITALIZATION

TSXV : HAR	(millions)
Shares Outstanding	87.9
Warrants	NIL
Options (\$0.15 to \$1.09)	3.8
Fully Diluted Shares Outstanding	91.7
Treasury*	\$3.9

\*As at January 31, 2025

### Jean-Pierre (JP) Janson | Chair

- Chair of Midland Exploration Inc.
- Former MD of Richardson GMP Limited

### Rick Breger | President and CEO

- Former Corp. Dev. roles at IAMGOLD & Coeur Mining
- 20+ years in the mining industry

### Vincent Dubé-Bourgeois

- President & Director of Earthlabs
- Founder, Former Director & CEO of Goldspot Discoveries Corp. (now owned by ALS)

### Sylvie Prud'homme

- Former Investor Relations at Osisko Mining Corp.
- 35+ years in the mineral exploration industry

### Karen Rees

- First Vice President of PDAC
- Former VP Exploration & Secretary at Temex Resources Corp.
- 30+ years in the mineral exploration industry

### Dr. Robert (Bob) Valliant

- Former Founder, President, CEO & Chairman at NewOrigin Gold Corp.
- Former VP Exploration at LAC Minerals

# BOARD OF DIRECTORS

# STRONG SUPPORT



# MANAGEMENT TEAM

## RICK BREGER

President and CEO, Director

Mr. Breger has diverse industry experience spanning both the technical and financial sides of the mining industry. His career includes impactful roles at IAMGOLD Corp. and Coeur Mining Inc., where he executed strategic initiatives and a variety of transactions. Rick's expertise is further bolstered by his capital markets experience while at Canaccord Genuity and Dundee Capital Markets. He holds an MBA from Ryerson University (now Toronto Metropolitan University) and a B.Sc. in Earth and Planetary Sciences from McGill University. Rick is a practicing member of the Professional Geoscientists of Ontario (PGO).

## LUDOVIC BIGOT

Vice President Exploration

Mr. Bigot brings a unique skillset to Harfang with his nearly 15 years' experience as an exploration geologist. He was most recently with ALS GoldSpot Discoveries as the lead project geologist responsible for the management and mineral targeting programs for precious and strategic metals in green- and brownfields exploration projects. Ludovic obtained a Master of Science in Economic Geology from the Université du Québec à Montréal ("UQAM") where he focused on gold deposits in the Abitibi Greenstone Belt in Québec. He also obtained a Bachelor of Science in Earth Sciences from UQAM and is a practicing member of both the Ordre des géologues du Québec (OGQ) and the Professional Geoscientists of Ontario (PGO).

## YVON ROBERT

Chief Financial Officer

Mr. Robert has been providing financial reporting and accounting services to junior public companies in the mineral exploration business for nearly 30 years. Prior to this, he held the position of Chief Financial Officer and Treasurer at Strateco Resources Inc., Chief Financial Officer at Opti-Coating Laboratories Inc., and Director of Finance & Administration at Vision2 International Inc. Yvon is a member of the Ordre des comptables professionnels agréés du Québec, CPA, CA, and holds a Bachelor of Business Administration with a concentration in accounting.

## MARC POTHIER

Corporate Secretary and Legal Advisor

Mr. Pothier focuses primarily on securities, corporate finance, and mining law. He has often participated in listings, private placements, arrangements, reorganizations, and qualifying transactions carried out by a large number of issuers. Marc is consistently ranked as a leading lawyer in the domains of mining and natural resources law. He has been included in the Canadian legal directory Best Lawyers in Canada since 2008 and in the Canadian legal directory LEXPERT since 2012. In addition, Marc was named "Lawyer of the Year" in the Best Lawyers 2015 directory in the natural resources sector in Montreal.

# HARFANG ACQUIRES NEWORIGIN GOLD CORP.

TRANSACTION COMPLETED ON NOVEMBER 7, 2025

## TRANSACTION RATIONALE

### Sky Lake's 9,100 Hectares of Underexplored Terrain in the Pickle Lake Gold Camp

- Project spans 27 km strike length in a favourable geological setting
- Historic high-grade drill results and non-compliant 40,000 oz gold resource suggest significant gold potential
- 2023 NI 43-101: "Technical Report on the Sky Lake Gold Project Patricia Mining Division Ontario, Canada" available on SEDAR+

### Blakelock + North Abitibi = 25 km of Strike Length Along the Prolific Casa Berardi Deformation Zone

- Consolidated area more than 11,000 hectares over combined 25 km strike length along prolific deformation zone

### Polymetallic Potential at South Abitibi in a Renewed Mining Camp

- Adjacent to Cobalt mining camp with exceptional infrastructures and year-round road access
- VTEM and IP work suggest potential for high priority targets along 2 km length of underexplored anomalies associated with Ni-Cu mineralization

### Accelerated Growth Potential and Greater Potential for Discovery

- Acquisition adds significant depth to asset portfolio, increasing chances of success

### Additional Exposure to Ontario Resulting in a More Balanced Portfolio

- Allows Harfang to explore year-round and benefit from Ontario's infrastructure

# PROJECT PORTFOLIO

## SKY LAKE

(Au – Ontario)

- Underexplored terrain next to the Pickle Lake Gold Camp
- Non-compliant resource of 40 koz Au @ 5 g/t Au
- Historic high-grade assay results: 6.26 g/t Au over 22.7 m, 7.26 g/t Au over 19.4 m, and 6.50 g/t Au over 16.8 m

## BLAKELOCK

(Au - Ontario)

- 25 km along the Casa Berardi trend
- Drilling results include 10.9 g/t Au over 10.25 m and 11.53 g/t Au over 6.0 m

## EGAN

(Au – Ontario)

- Central to Timmins-Kirkland Lake-Matachewan mining camps
- High-grade gold discoveries in syenite
- 4 high-priority targets

## LAKE MENARIK

(Au & CSM - Quebec)

### West Zone

- Grab samples up to 1,918 g/t Au
- Reminiscent of Timmins, Kirkland Lake and Matachewan gold camps
- Drilling includes 1.15 g/t Au over 47.0 m

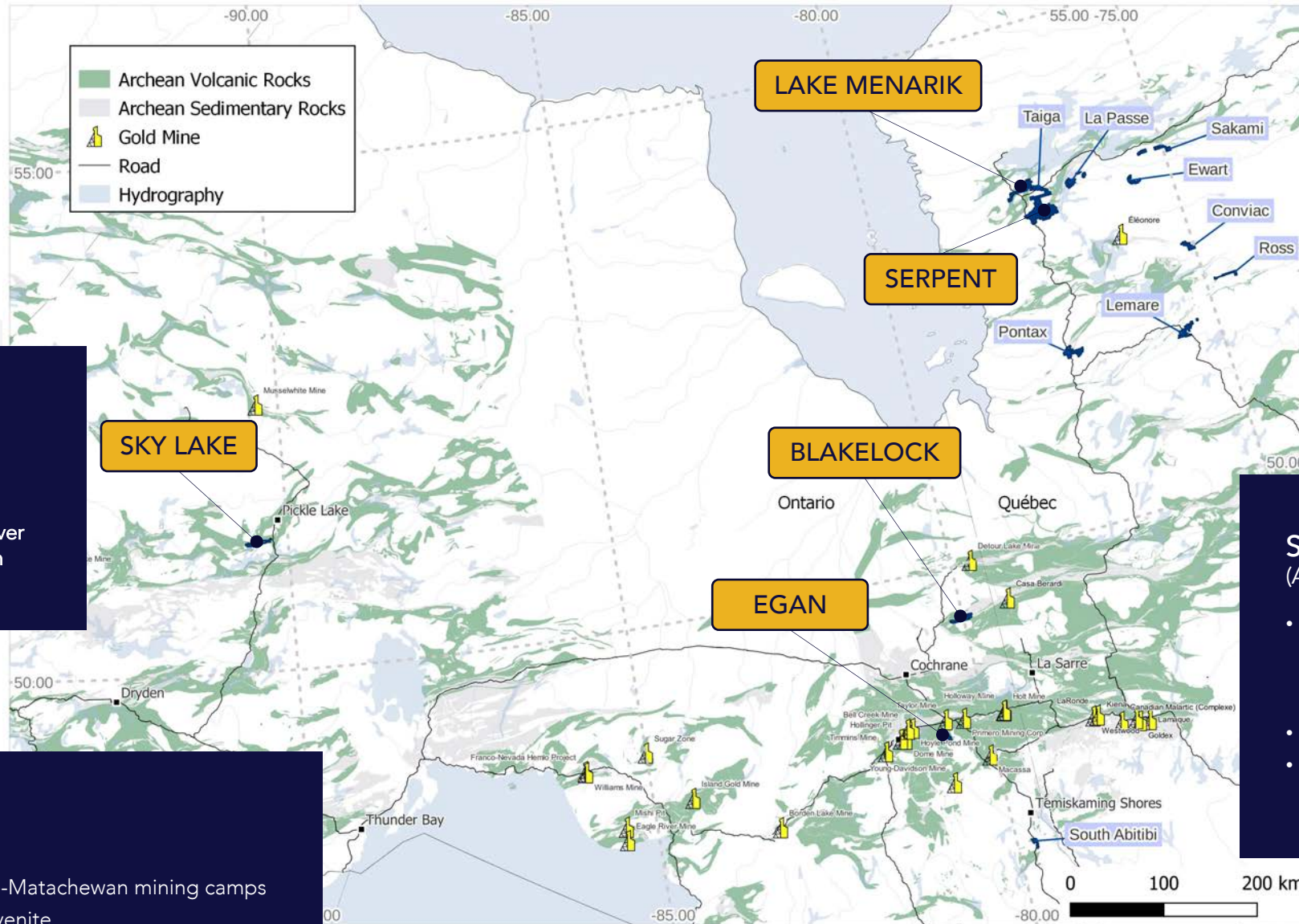
### East Zone

- Recent Au discoveries
- Recent Ni-Cu-PGE discoveries
- Non-compliant historic Cr-PGE resource
- Fall 2024 exploration program planned

## SERPENT

(Au & CSM - Quebec)

- 60+ gold showings incl.: 340 g/t Au (grab), 7.8 g/t Au over 6.15 m (channel), 2.5 g/t Au over 19.65 m (DDH)
- 3 gold trends delineated
- Multiple CSM discoveries including Amélie, Milou, Mista



TSXV : HAR



# Precious Metals Projects

## ONTARIO

SKY LAKE • BLAKELOCK • EGAN

## QUEBEC

SERPENT • LAKE MENARIK

**Au**  
*Gold*

# SKY LAKE

PICKLE LAKE GOLD CAMP, ONTARIO, CANADA

- Commodity: Gold
- Ownership: 100% Harfang
- Stage: Exploration
- Size: 475 claims totalling 9,054 hectares
- Location & Access: 35 km SW of Pickle Lake; road access via Highway 599 (approx. 1 km from site)
- Encumbrances: 0.50% – 2.75% NSR on certain claims; Back-In Right on Koval claims to Barrick Gold Corp.

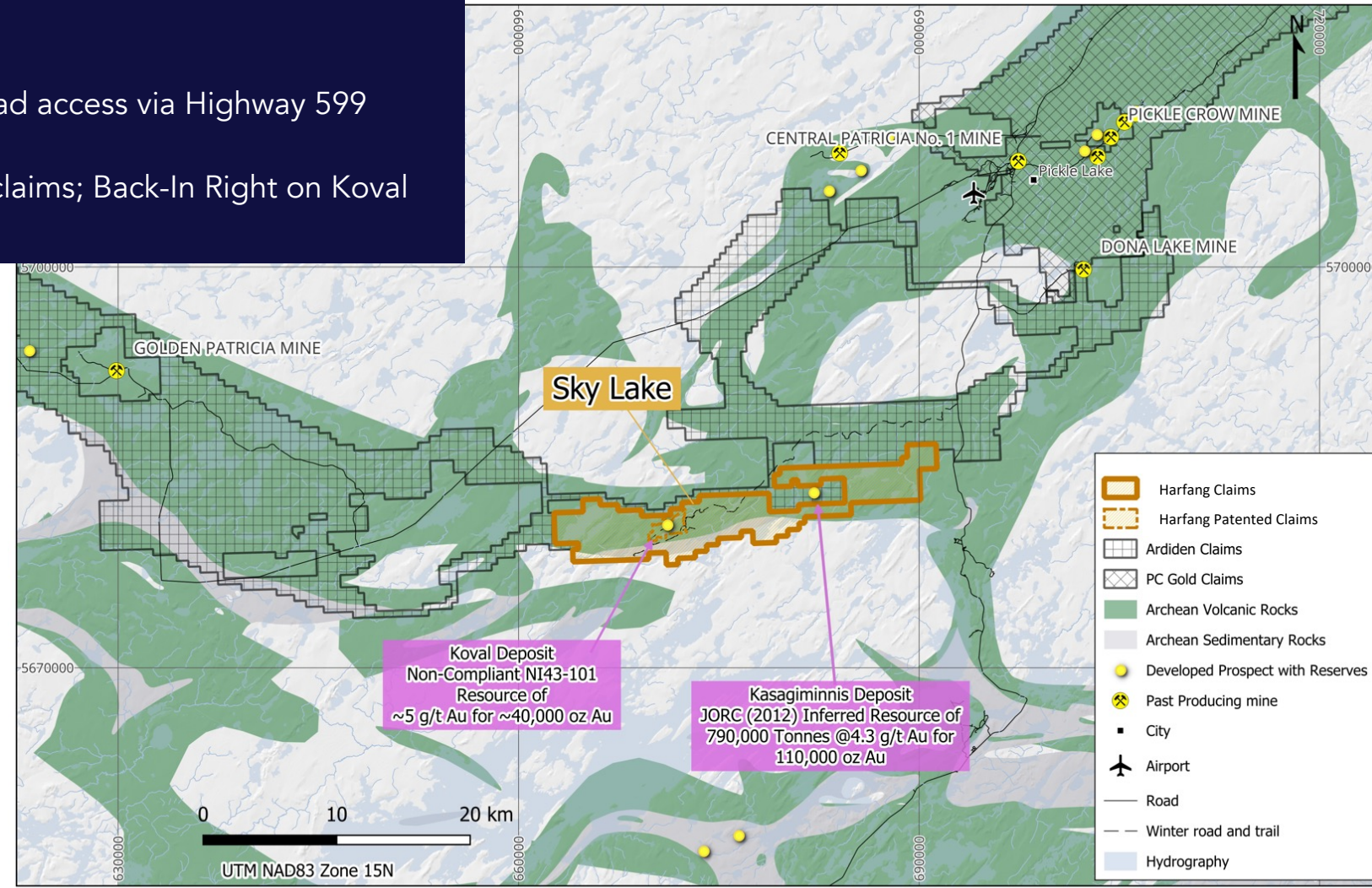
## UNEXPLORED POTENTIAL

- 9,100 ha of underexplored terrain 25 km SW of the Pickle Lake Gold Camp
- No significant exploration done since the 1980's

## KOVAL

- Historic and 43-101 non-compliant resource of 40,000 oz Au grading ~5 g/t Au
- Near surface high grade historic drill intercepts:
  - 7.3 g/t Au over 19.5 m
  - 6.9 g/t Au over 7.9 m
  - 6.5 g/t Au over 16.8 m
  - 6.3 g/t Au over 22.7 m
  - 6.0 g/t Au over 9.2 m
  - 4.3 g/t Au over 15.4 m

TSXV : HAR





# SKY LAKE HISTORY

1953

Gold was discovered by a local prospector working for the Koval family and the core group of claims were staked (the Koval Patent Claims).

Early 1970s

Long Lac Mines (aka LAC Minerals) acquires Hasaga Gold Mines and restarts exploration efforts on the Koval claim block. A review of the information indicates a general ENE trending series of weak to moderate linear magnetic highs and coincident IP chargeability highs corresponding to the mapped trend of gold mineralization.

1994

Barrick acquired LAC Minerals including the Koval Patent Claims and conducts a channel sampling program. Result confirm gold mineralization hosted in 3 parallel horizons within a 7 metre (23 ft) thick sequence of pyritic sericite altered felsic volcanic rocks.

2004

Terex Resources completed an electromagnetic survey centred on the Koval claim block while McVicar Resources completed an airborne magnetics survey centred on the Kasagiminnis occurrence, with half of the survey area occurring on the current Sky Lake property. Both companies delineated high magnetic zones across the length of the Sky Lake property, prospective for gold mineralization, interpreted as iron formation.

2017

Tri Origin spends 5 days in the field doing geologic mapping and rock chip sampling.

2022

NewOrigin conducts mapping, chip sampling, and soil sampling program over the Koval Patent Claims. Multiple northeast-southwest trending gold-in-soil anomalies have been identified with the strongest anomalies occurring along strike to the west and east of the Koval zone

1954

Hasaga Gold Mines acquires the property and commences exploration with trenching and diamond drilling. Eight prospective zones are identified and near surface gold mineralization is confirmed. Further exploration is halted when studies suggested property was uneconomic at a \$35/oz gold price.

1987

Two drilling campaigns totalling approx. 6,800 metres in 37 holes tested the extent of mineralization along strike and down dip. Few results are available from this campaign.

1996

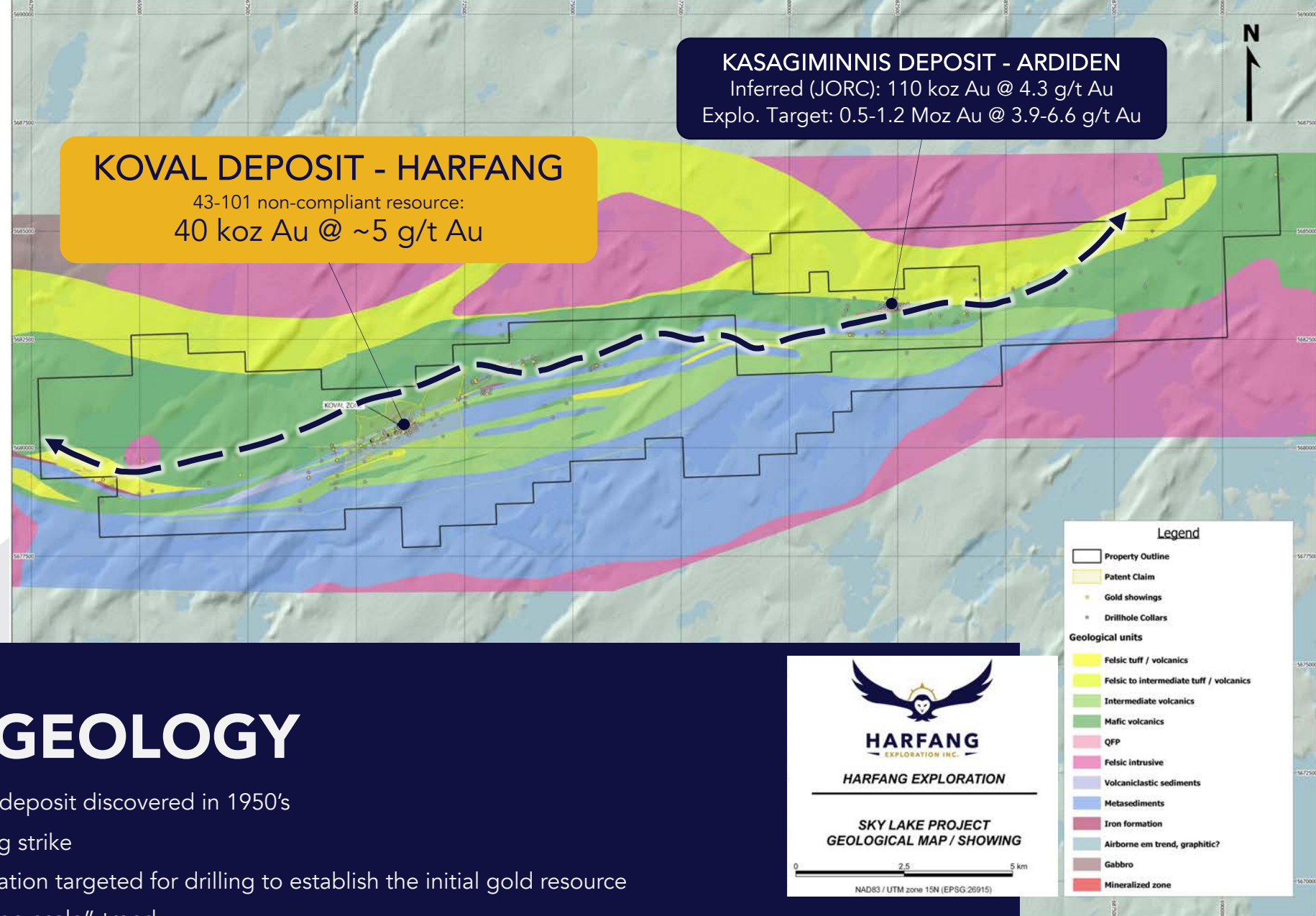
Moss Resources optioned the Koval claims and completed 790 metres of drilling in 8 holes. All 8 holes intercepted anomalous gold mineralization, with grades from the main zone ranging from 1.1 g/t Au over 1.4 metres to 8.1 g/t Au over 0.9 metres.

2016

Tri Origin Exploration options the Koval Patent Claim from Barrick Gold. Under the terms, Tri Origin must spend \$500k in 4 years to acquire a 96% interest. Barrick will retain a 0.5% NSR and a back-in right to acquire a 51% interest.

2019

Tri Origin completes 2D DC resistivity and IP (DCIP) survey over 3 km<sup>2</sup> area within the Koval Patent Claims. The IP survey identified a series of chargeability highs at the Koval zone, both north and south of the Koval zone, along-trend east of Koval, and along the west-southwest strike projection of the Koval Zone.



TSXV : HAR

# SKY LAKE GEOLOGY

- Koval patented claims host a historic gold deposit discovered in 1950's
- Open at depth and in both directions along strike
- Koval gold deposit and adjacent iron formation targeted for drilling to establish the initial gold resource
- Gold occurrences known along 15 km "camp-scale" trend
- Geologic environment shares important similarities with nearby multi-million ounce gold districts of Quebec & northern Ontario

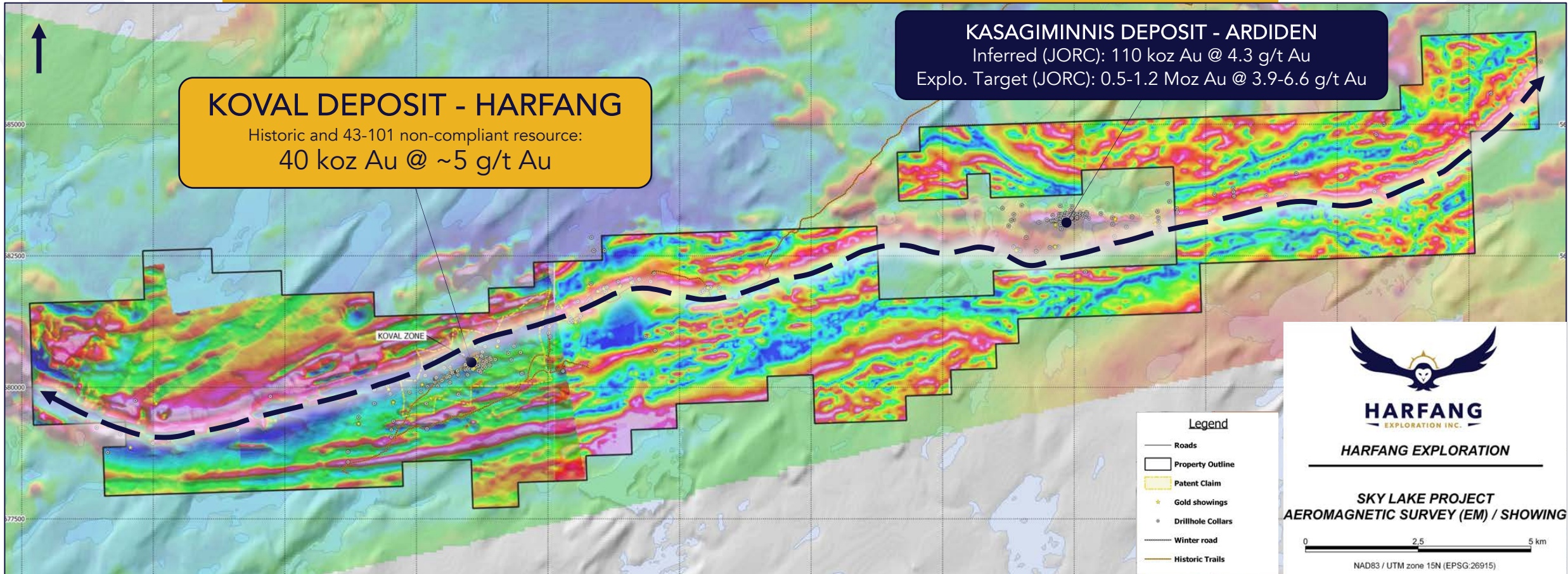
# SKY LAKE GEOPHYSICS

## KOVAL DEPOSIT - HARFANG

Historic and 43-101 non-compliant resource:  
40 koz Au @ ~5 g/t Au

## KASAGIMINNIS DEPOSIT - ARDIDEN

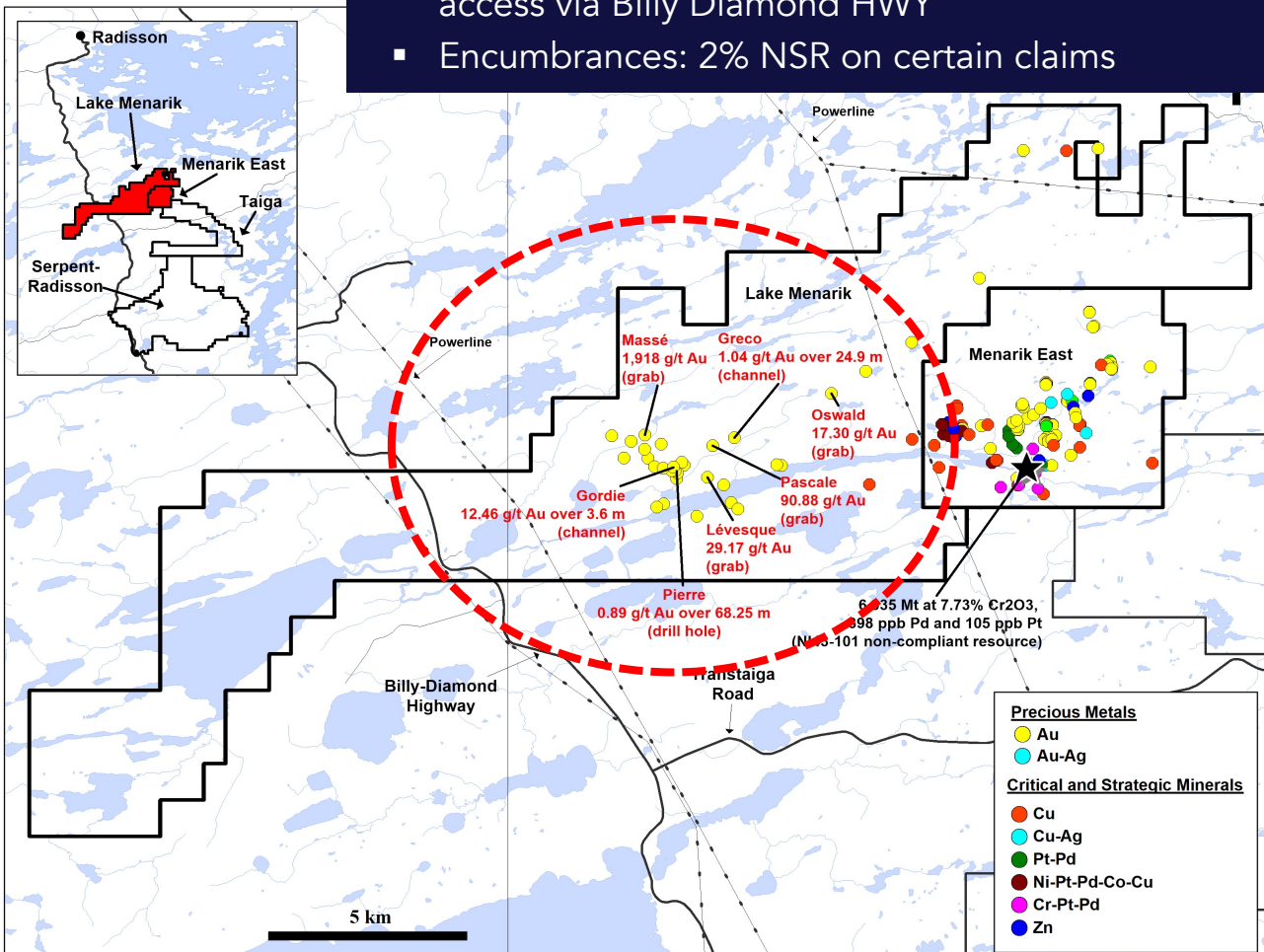
Inferred (JORC): 110 koz Au @ 4.3 g/t Au  
Explo. Target (JORC): 0.5-1.2 Moz Au @ 3.9-6.6 g/t Au



# LAKE MENARIK

EEYOU ISTCHEE JAMES BAY, QUEBEC, CANADA

- Commodities: Gold, Nickel, Copper, PGEs, Chromium
- Ownership: 100% Harfang
- Stage: Exploration
- Size: 386 claims totalling 15,669 hectares
- Location & Access: 45 km south of Radisson; 30 km from La Grande Airport; road access via Billy Diamond HWY
- Encumbrances: 2% NSR on certain claims



## 2023 EXPLORATION

- Maiden winter program of 17 DD holes totalling 3,416 m
- DD program confirmed broad gold intervals
  - 1.15 g/t Au over 47 m, incl. 3.75 g/t Au over 7 m (Pierre)
  - 1.75 g/t Au over 21 m, incl. 2.49 g/t Au over 14 m (Pierre)
  - 0.88 g/t Au over 9 m, incl. 5.19 g/t Au over 1.2 m (David)
  - 1.67 g/t Au over 5 m, incl. 6.68 g/t Au over 1.2 m (David)
- IP Survey completed in March 2023 (39.2 linear km) outlined strong and wide chargeability targets at least 1.5 km long

## 2024 EXPLORATION

- Summer program included prospecting several IP anomalies and promising showings (Greco, Oswald)

TSXV : HAR

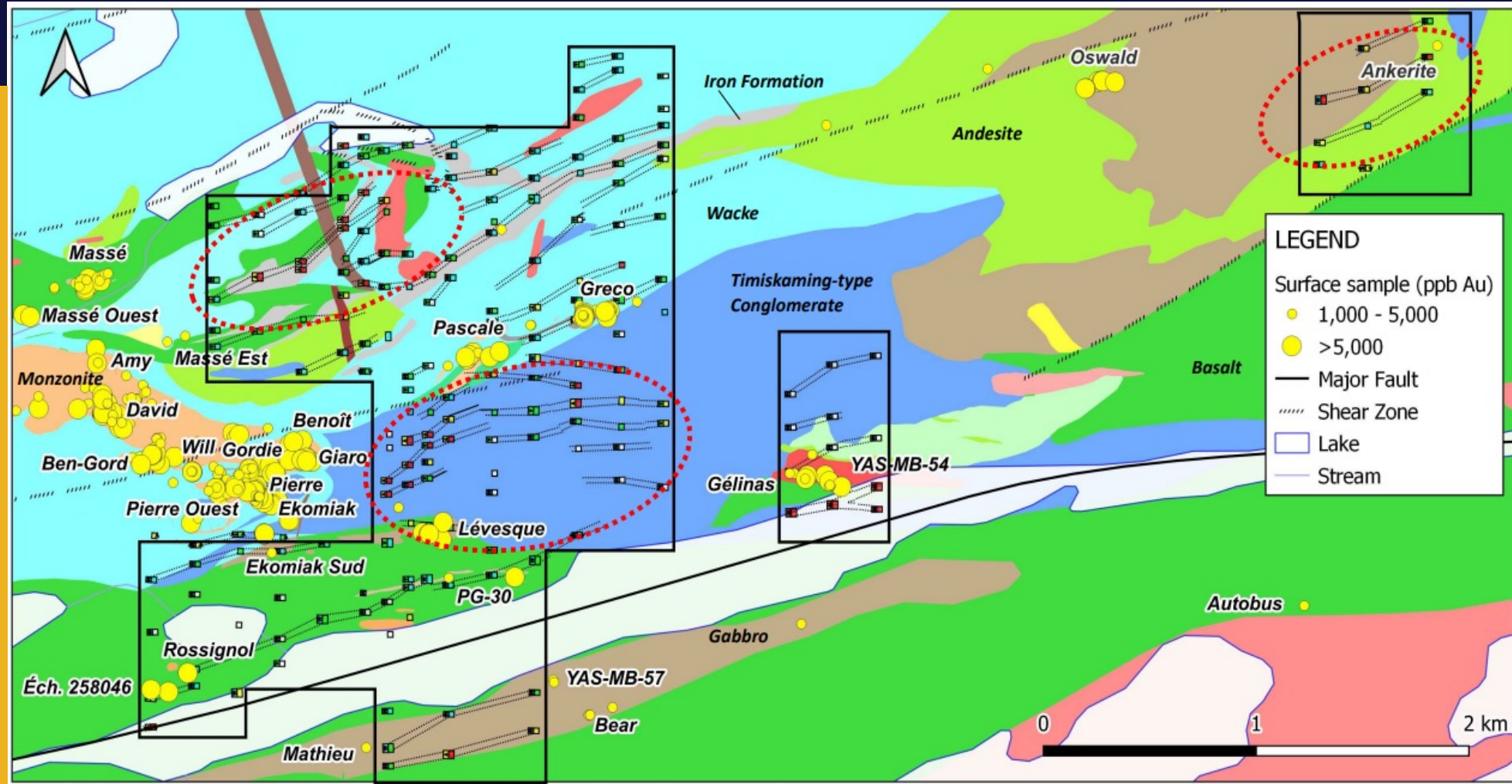
# LAKE MENARIK WEST ZONE

## HIGHLY PROSPECTIVE LOCAL GEOLOGY:

- Reminiscent of Timmins, Kirkland Lake and Matachewan gold camps
- Extensive shear zone with massive ankerite alteration up to 700 m long and 50 m wide
- Differentiated monzonite, polymictic conglomerate, lamprophyres, well-preserved volcano-sedimentary sequence (mainly greenschist facies)

## HIGH-GRADE GOLD:

- Grab samples:
  - 1,918.00 g/t Au (62 oz/t Au)
  - 90.88 g/t Au
  - 61.50 g/t Au
- Channel samples:
  - 12.46 g/t Au and 25.5 g/t Ag over 3.60 m
- DDH intersections:
  - 1.15 g/t Au over 47 m



Massé: 1,918 g/t Au (grab)  
 Pierre: 0.89 g/t Au over 68.25 m (DDH)  
 Gordie: 12.46 g/t Au over 3.60 m (channel)

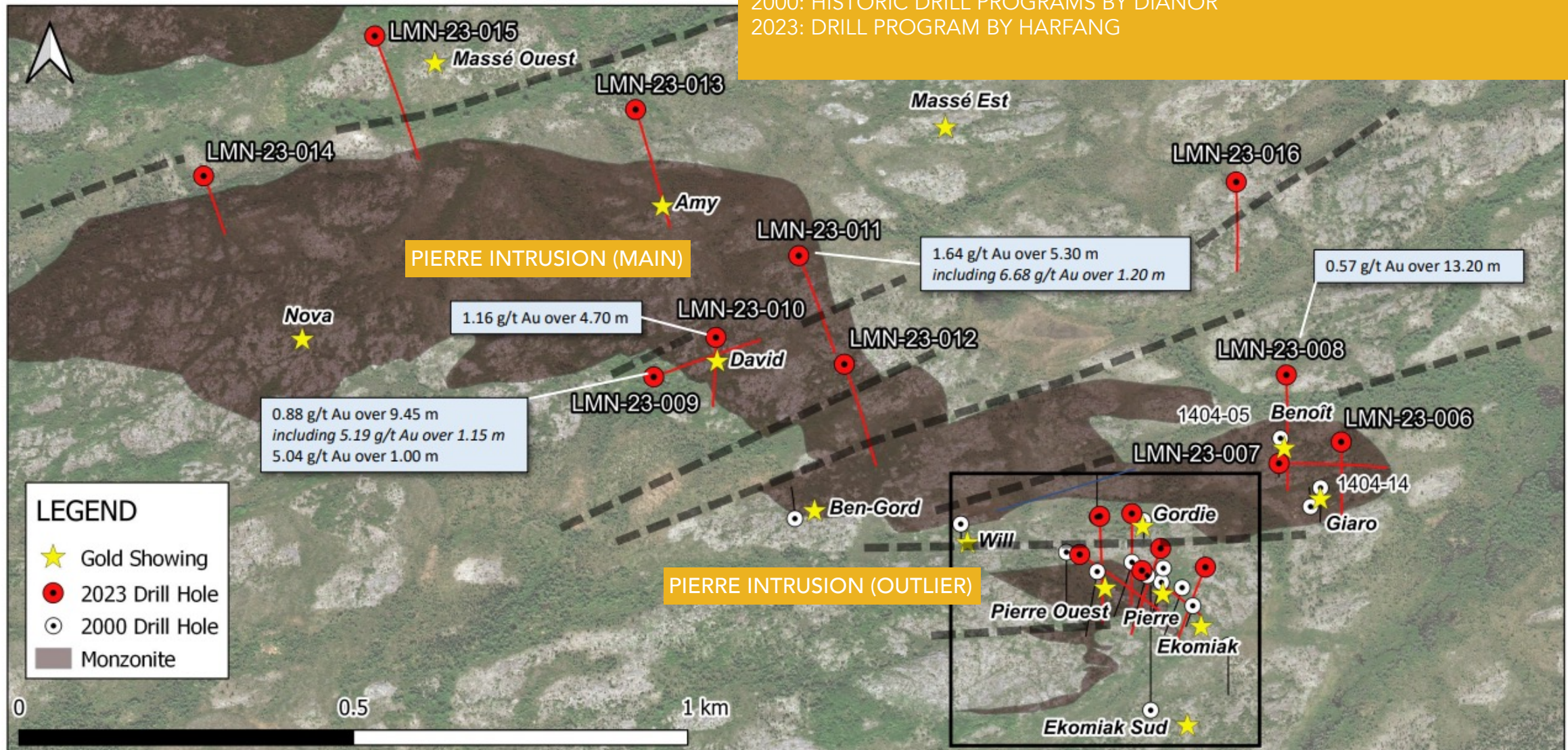
Ekomiak: 61.5 g/t Au (grab)  
 Greco: 1.04 g/t Au over 24.9 m (channel)  
 Pascale: 90.88 g/t Au (grab)

Lévesque: 29.17 g/t Au (grab)  
 Oswald: 17.30 g/t Au, 217 g/t Ag, 0.61% Pb (grab)

# LAKE MENARIK MAIN INTRUSION

## DRILL RESULTS

2000: HISTORIC DRILL PROGRAMS BY DIANOR  
2023: DRILL PROGRAM BY HARFANG

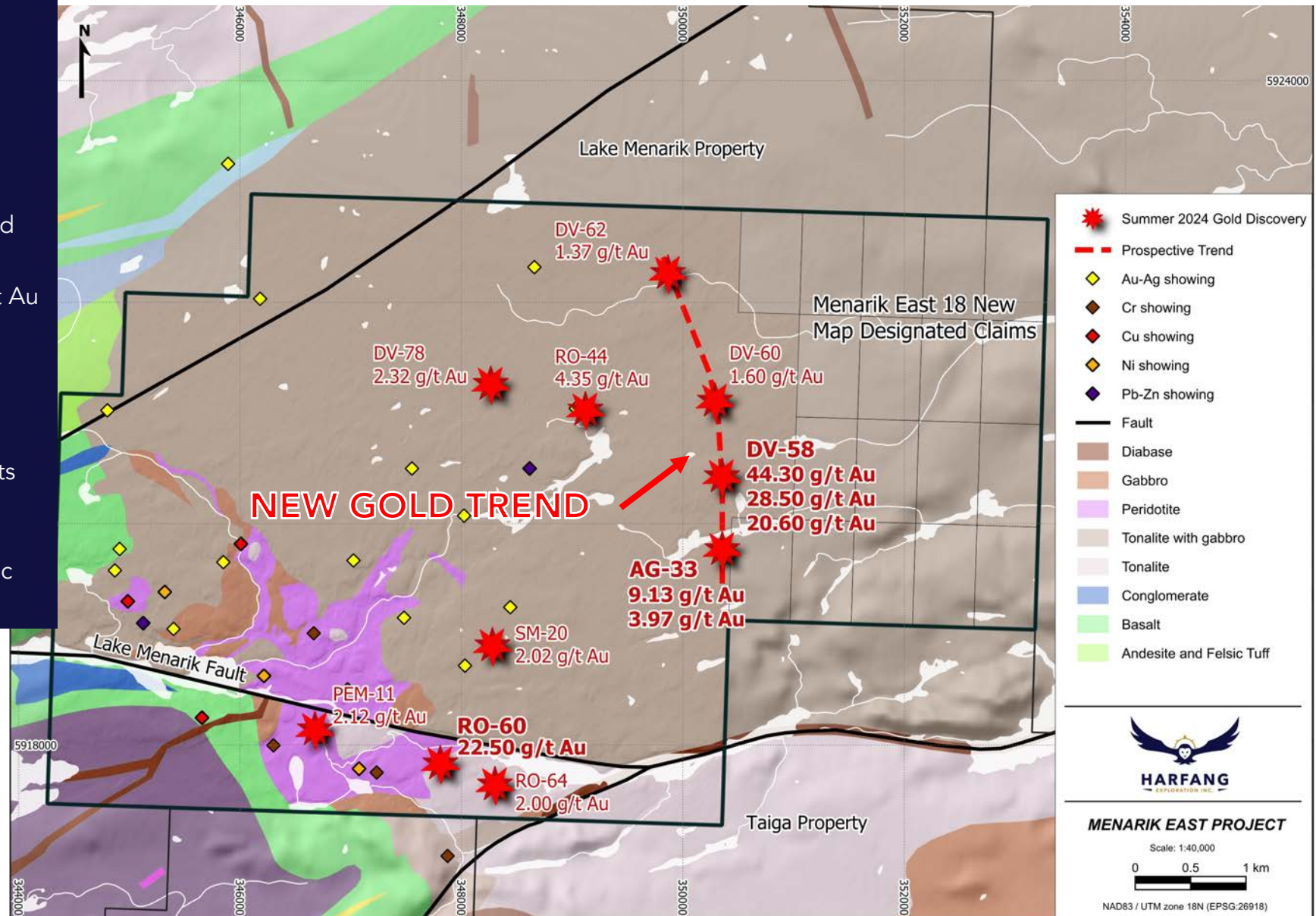


TSXV : HAR

# LAKE MENARIK EAST ZONE

## 2024 EXPLORATION:

- Maiden exploration program by Harfang
- Multiple high-grade gold discoveries and new gold trend identified through grab samples:
  - DV-58 – 44.30 g/t Au; 28.50 g/t Au; 20.60 g/t Au
  - RO-60 – 22.5 g/t Au
  - AG-33 – 9.13 g/t Au; 3.97 g/t Au
  - DV-62 – 1.37 g/t Au
  - DV-60 – 1.60 g/t Au
- Discovery of gold-bearing sheared dykes highlights the potential of a 20 km<sup>2</sup> area of mineralized gabbroic dykes
- Au +/- Cu-Ni-PGE discoveries suggest polymetallic potential in the ultramafics



# SERPENT

EEYOU ISTCHEE JAMES BAY, QUEBEC, CANADA

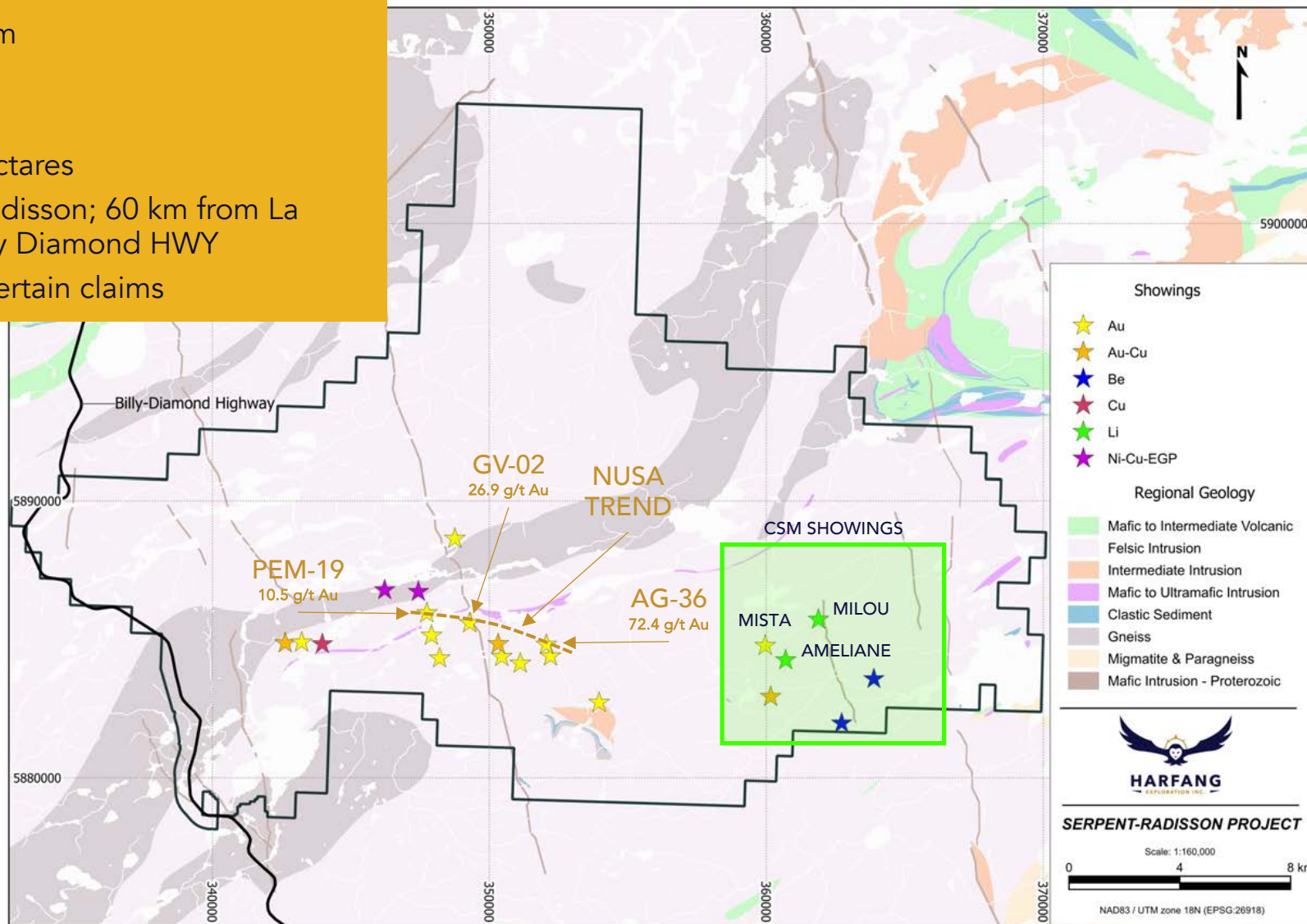
- Commodities: Gold, Copper, Lithium
- Ownership: 100% Harfang
- Stage: Exploration
- Size: 988 claims totalling 50,843 hectares
- Location & Access: 90 km SSE of Radisson; 60 km from La Grande Airport; road access via Billy Diamond HWY
- Encumbrances: 2% to 4% NSR on certain claims

## GOLD SHOWINGS

- Discovery of 60+ gold showings including grab samples up to 340 g/t Au, channel samples of 7.78 g/t Au over 6.15 m, and DDH samples of 2.52 g/t Au over 19.65 m and 1.64 g/t Au over 22.40 m

## SUMMER 2024 EXPLORATION

- High-resolution satellite images taken across the entire property to help target prioritization
- 5 high-grade gold discoveries within quartz veins systems associated with shear zones in underexplored areas.
- 12 grab samples returned assay results above 5g/t Au
- New 5 km gold trend delineated: **THE NUSA TREND**
- Additional significant discoveries in underexplored areas



TSXV : HAR



# SERPENT GOLD TRENDS

60+

Total Gold Showings

3

Gold Trends Delineated

## NUSA GOLD TREND

- Announced September 2024 along with three high-grade gold discoveries highlighted by 72.4 g/t Au, 26.9 g/t Au, 11.2 g/t Au in grab samples
- 5 km-long trend and extends gold footprint 1 km to the North
- Fall channel sampling program confirmed and expanded gold mineralization at PEM-18 with vein traced over 100 m along strike and up to 7 m wide

## STU GOLD TREND

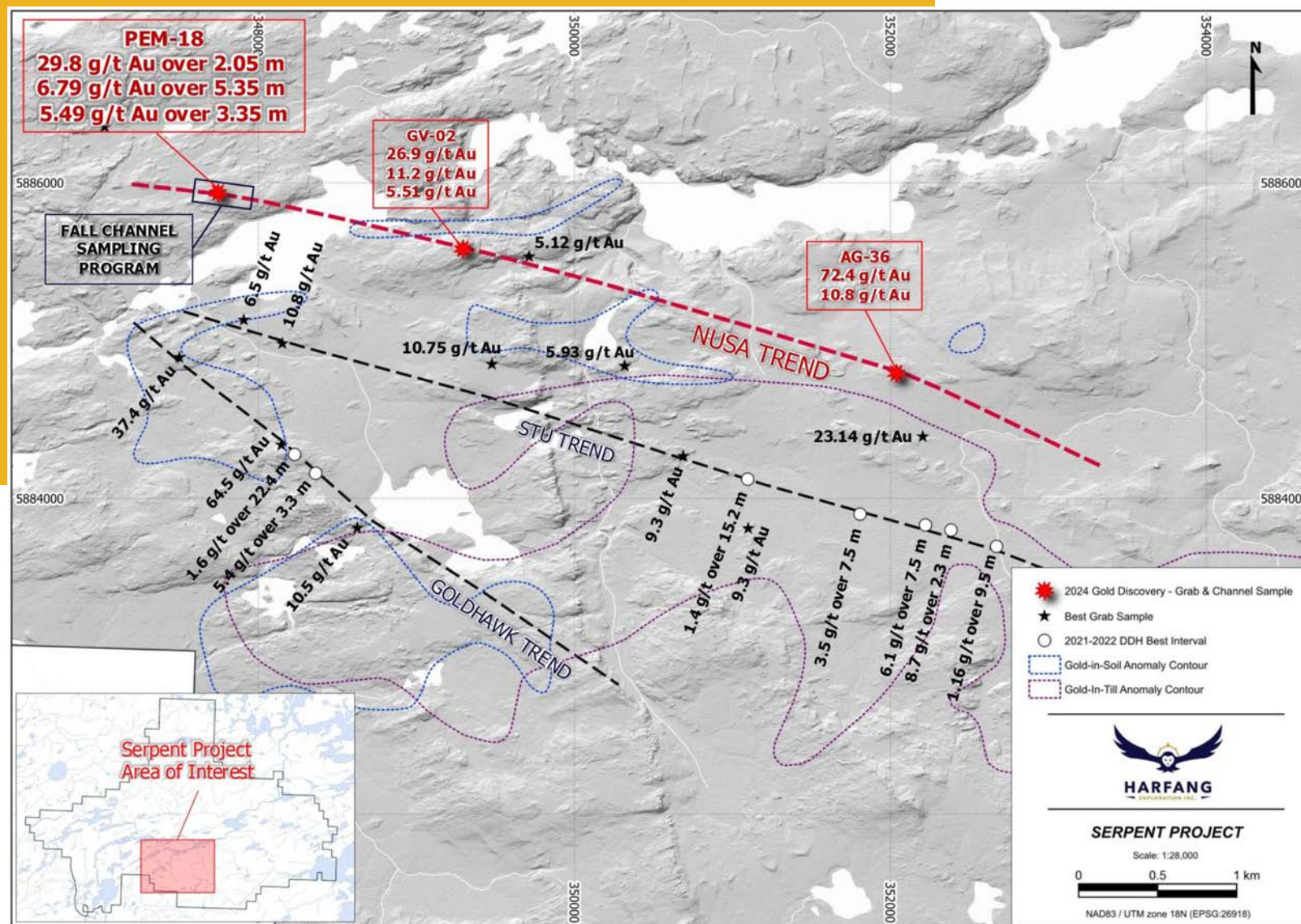
- Drilled in 2021 and 2022 and returned assay results highlighted by 6.1 g/t Au over 7.6 m, 3.5 g/t Au over 7.5 m, and 1.4 g/t Au over 15.2 m
- Follows similar magnetic trend to Nusa

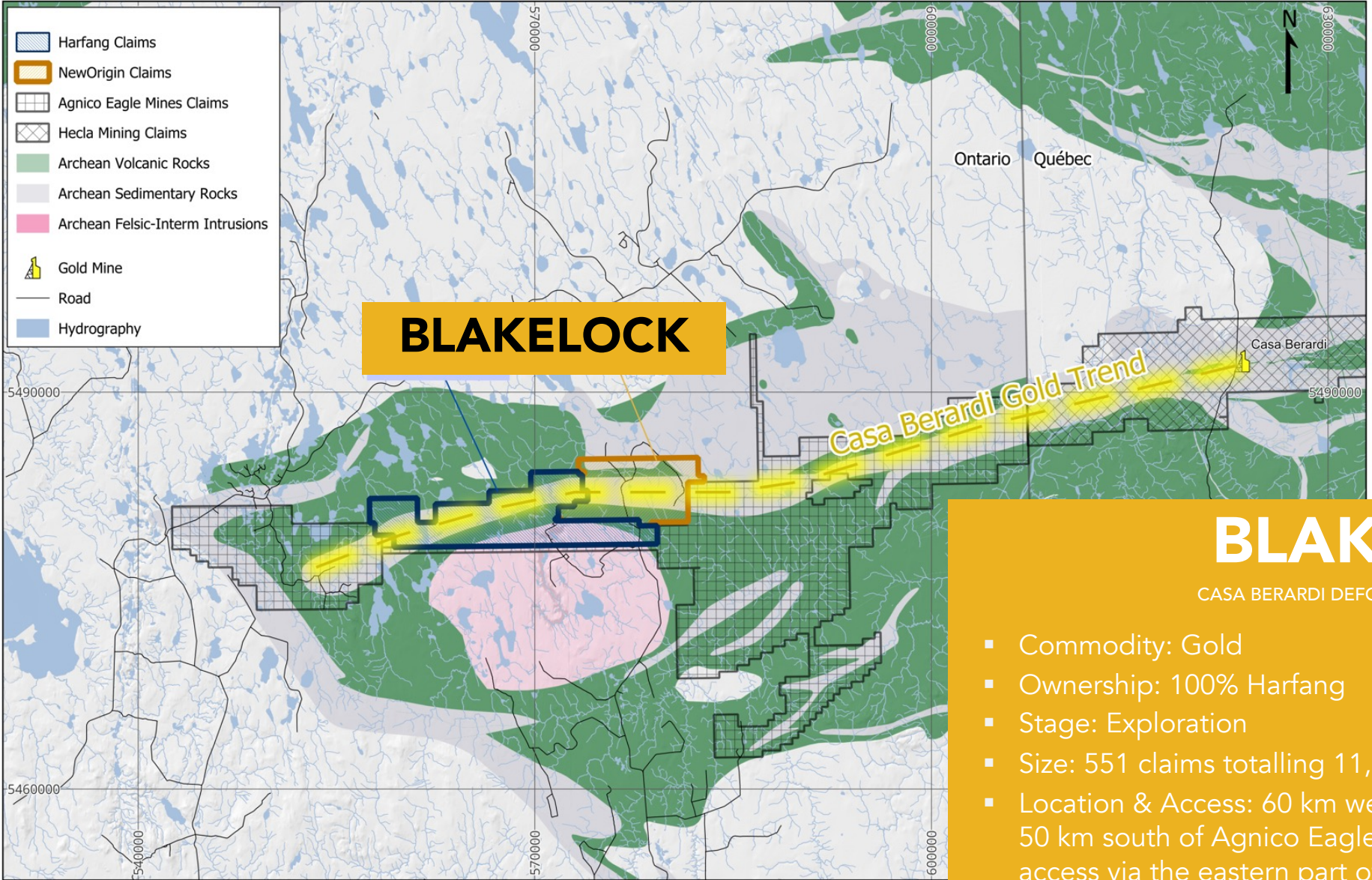
## GOLDHAWK GOLD TREND

- Drilled in 2021 and 2022 and returned assay results highlighted by 1.6 g/t Au over 22.4 m, and 5.4 g/t Au over 3.3 m
- Total drilled: 14,949 m in 76 holes

**GOLD-IN-TILL ANOMALY:** 7.6 km<sup>2</sup> (>25 grains)

**GOLD-IN-SOIL ANOMALY:** 4.8 km<sup>2</sup> (>50 ppb)





# BLAKELOCK

# BLAKELOCK

CASA BERARDI DEFORMATION ZONE, ONTARIO

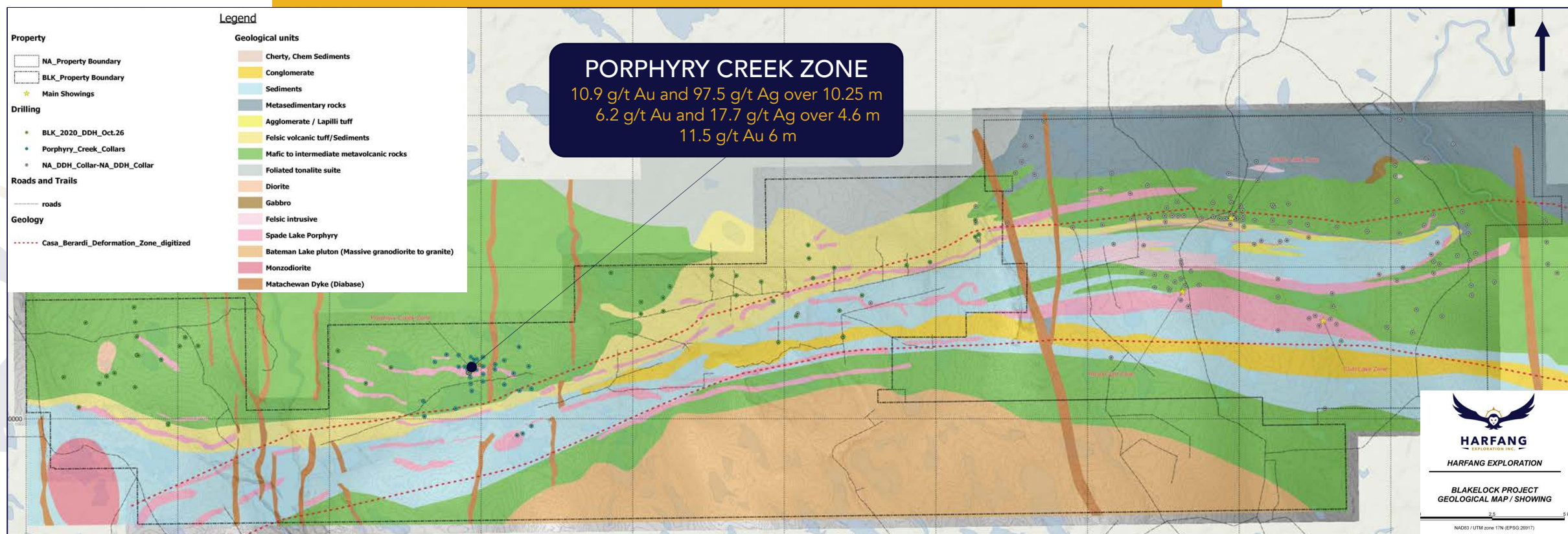
- Commodity: Gold
- Ownership: 100% Harfang
- Stage: Exploration
- Size: 551 claims totalling 11,227 hectares
- Location & Access: 60 km west of Hecla's Casa Berardi Gold Mine, 50 km south of Agnico Eagle's Detour Lake Gold Mine; road access via the eastern part of the property
- Encumbrances: 2% NSR

TSXV : HAR

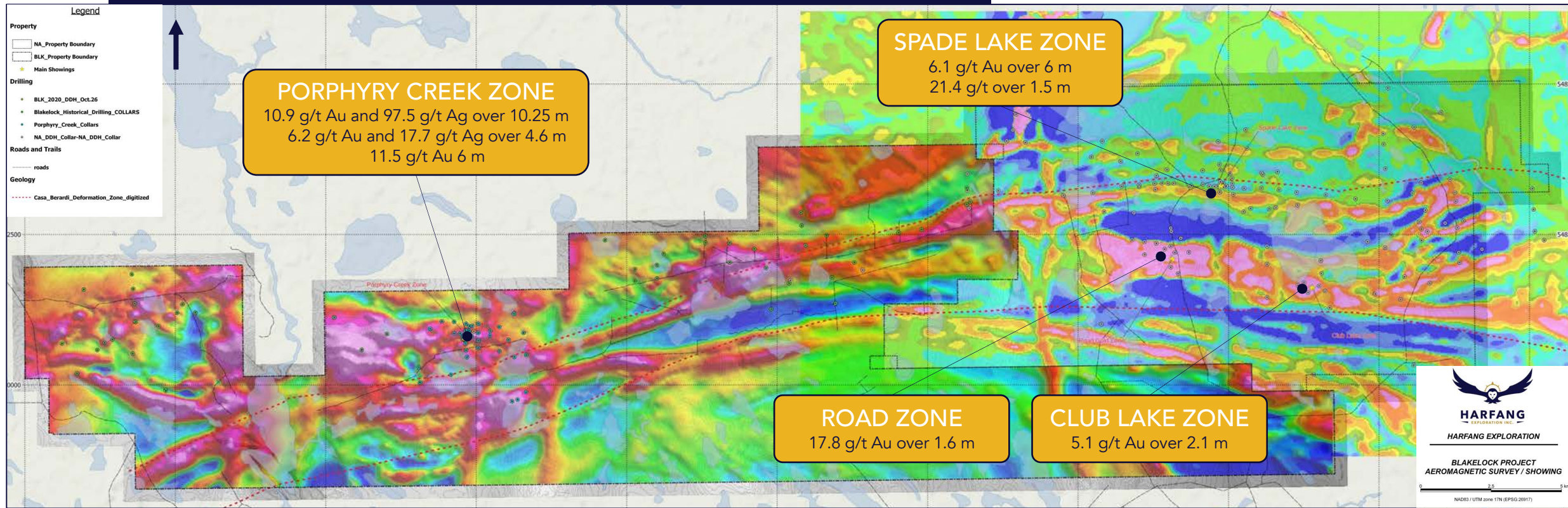
# BLAKELOCK

## PORPHYRY CREEK ZONE

- Located along the same deformation trend as Hecla's Casa Berardi Mine (1.3 Moz 2P reserves, 2024 production of 87 koz Au and 24 koz Ag)
- Porphyry Creek Zone is characterized by quartz veins and sulphide-rich mineralization
- Historic drill results highlighted by:
  - 10.9 g/t Au and 97.5 g/t Ag over 10.25 m
  - 6.2 g/t Au and 17.7 g/t Ag over 4.6 m
  - 15.7 g/t Au over 1.5 m
- LiDAR survey and high-resolution magnetic survey completed in 2021



# BLAKELOCK



TSXV : HAR

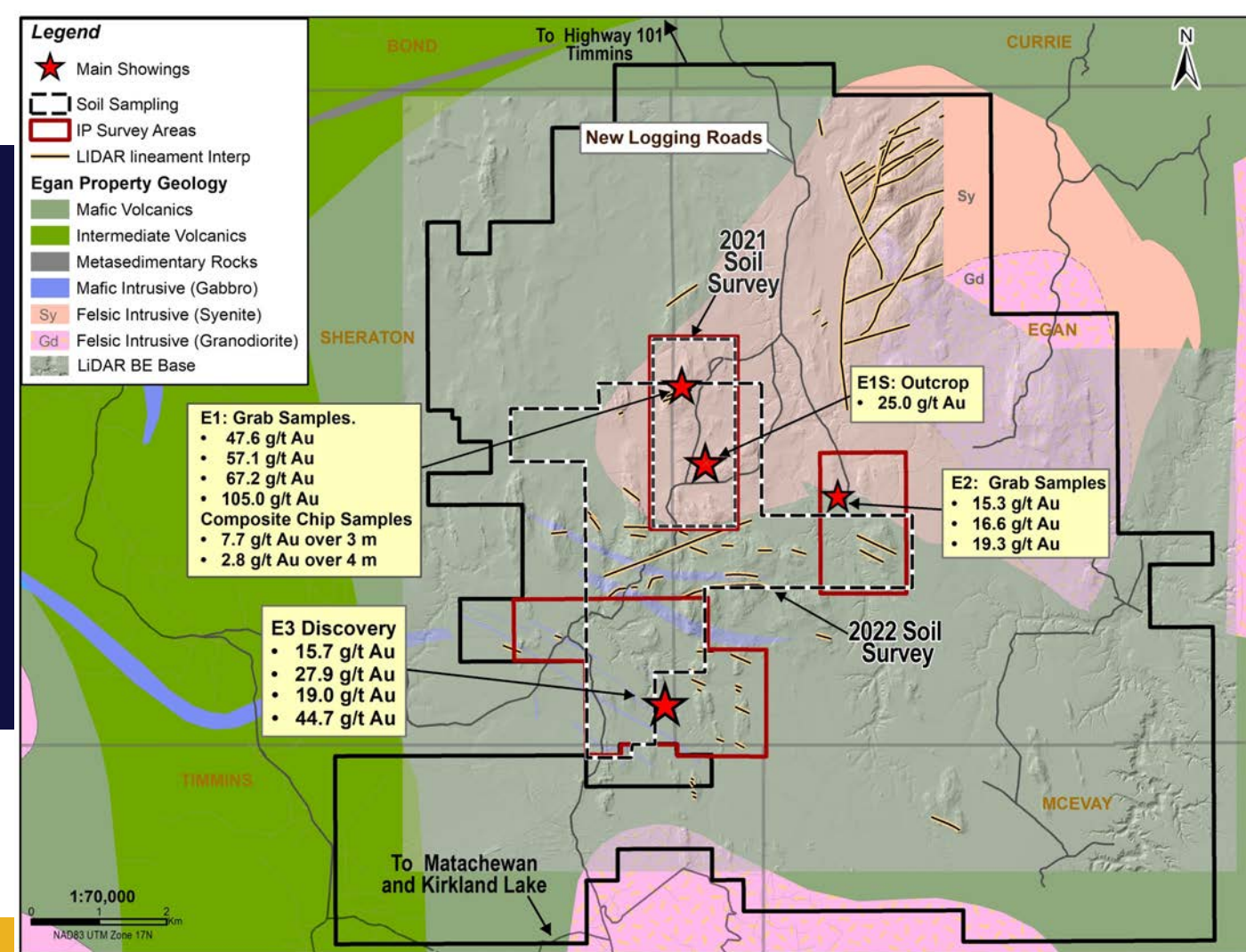
## MULTIPLE GOLD-BEARING ZONES

- ~30,000 m of historic drilling defined three east-trending gold-bearing zones: Spade Lake, Road, Club Lake
- Gold mineralization occurs within a 2 km thick sequence of rocks that can be traced over 7 km; 2021 DD program confirmed the high-grade potential of the system within the known broad zones of gold mineralization

# EGAN

ABITIBI GREENSTONE BELT, ONTARIO

- Commodity: Gold
- Ownership: 100% Harfang
- Stage: Exploration
- Size: 449 claims totalling 11,721 hectares
- Location & Access: 50 km ESE of Timmins, 50 km north of Matachewan; access via newly cut logging roads
- Encumbrances: 2% NSR on certain claims



## 4 GOLD OCCURENCES:

- E1: shear zone with quartz vein stockwork in syenite
- E1S: gold hosted in altered syenite
- E2: laminated quartz veins in sheared mafic metavolcanics
- E3: shear zone of sulphidic schist



# Critical & Strategic Minerals Projects

## SERPENT

**Li**

*Lithium*

**Cu**

*Copper*

## LAKE MENARIK – EAST ZONE

**Ni**

*Nickel*

**Cu**

*Copper*

**PGE**

*Pt-Pd*

**Cr**

*Chromium*

# SERPENT

## AMÉLIANE DISCOVERY (Li)

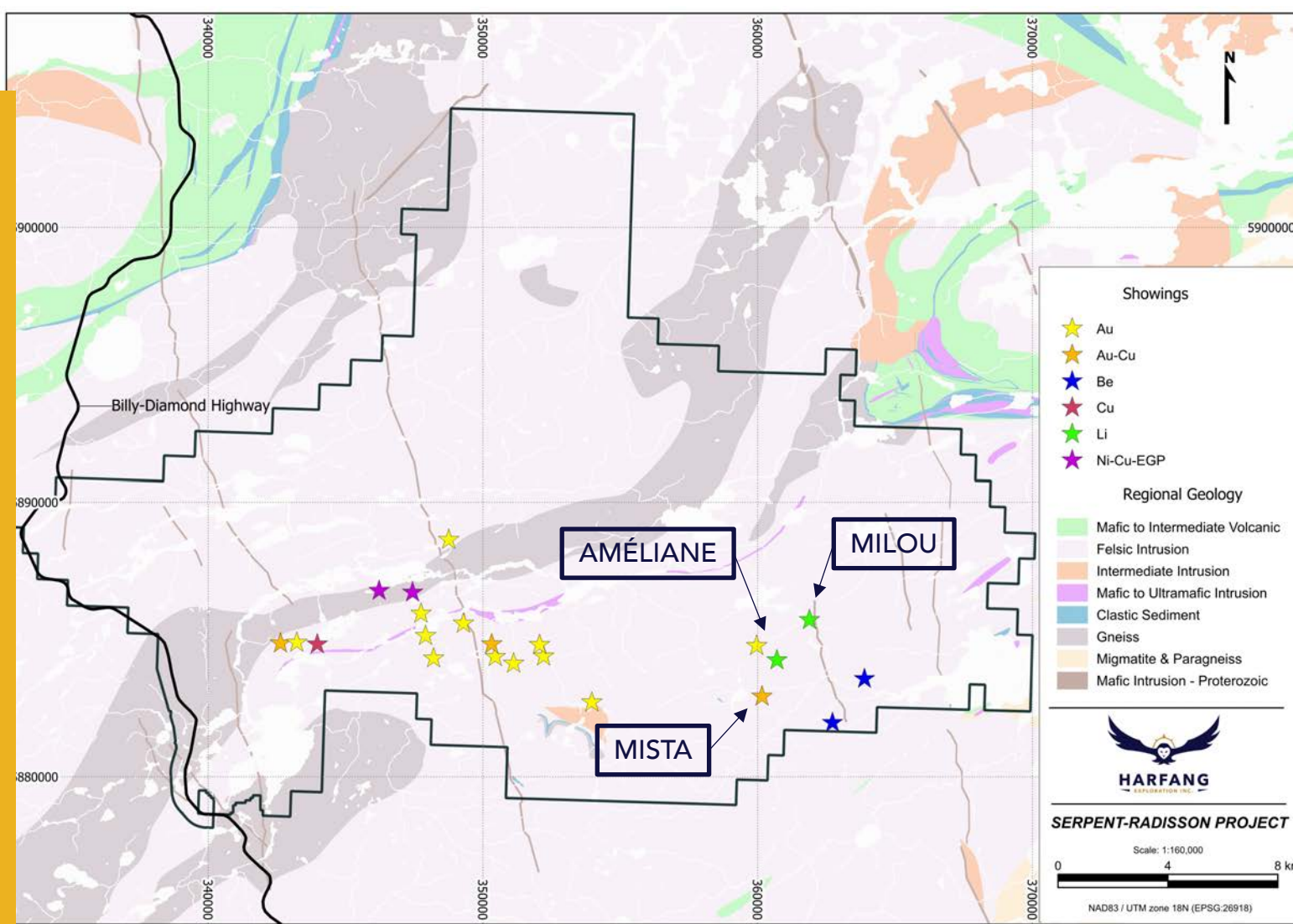
- Discovery of spodumene and tantalite in fertile and complex pegmatites in the eastern part of the property
- Several occurrences of spodumene scattered over a 1 km distance
- Boulder field with spodumene-bearing pegmatite floats

## MILOU DISCOVERY (Li)

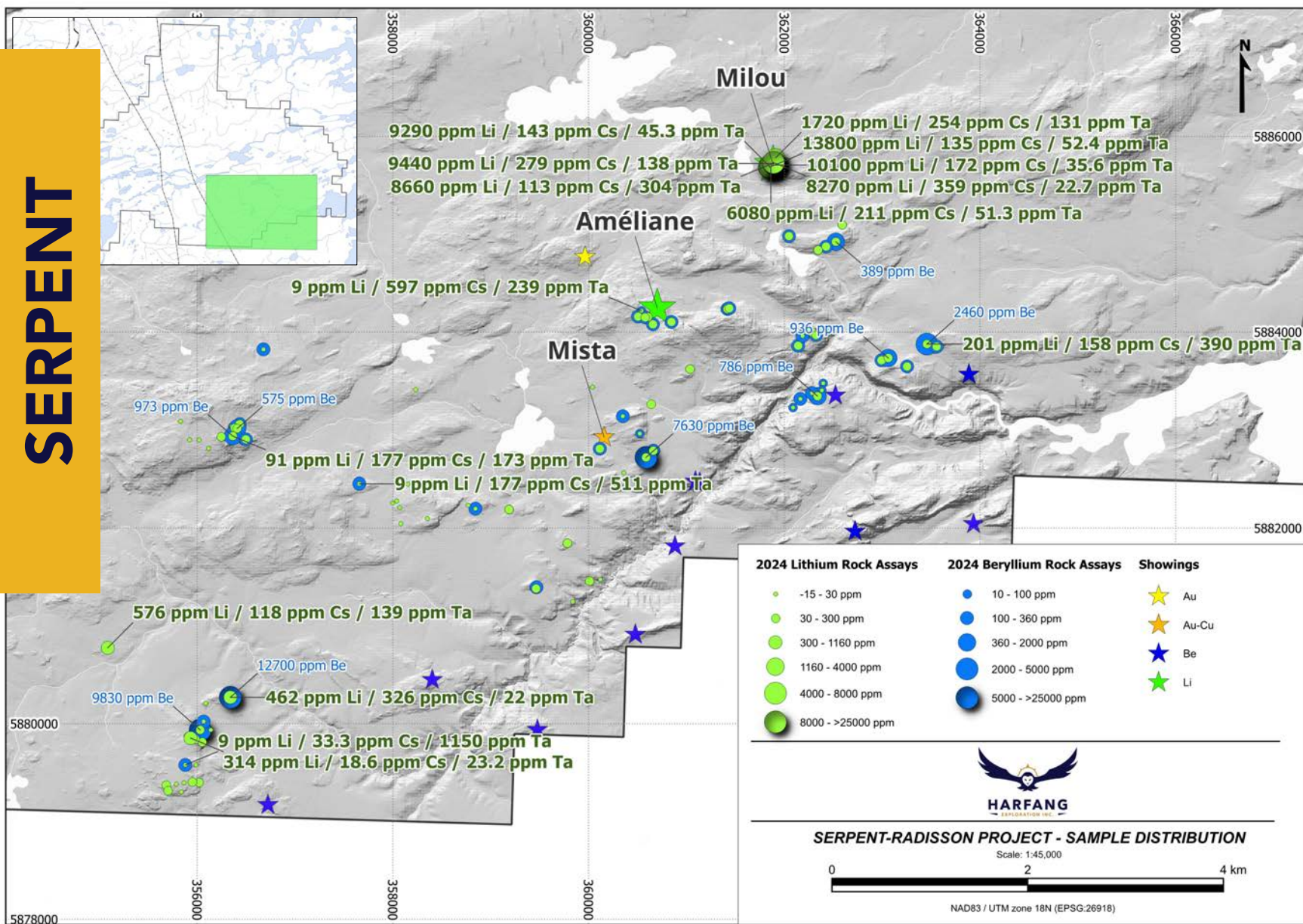
- Discovery of spodumene crystals in pegmatite dykes, located approximately 1.8 km NE of Améliane
- Discovery suggests a possible series of southeast shallow-dipping and sub-parallel spodumene-bearing pegmatite dykes (a stacked system).
- Grab samples from the Milou discovery that were collected from numerous exposed pegmatite dykes returned assay results highlighted by 2.97%  $\text{Li}_2\text{O}$ , 2.17%  $\text{Li}_2\text{O}$  and 2.03%  $\text{Li}_2\text{O}$ .

## MISTA SHOWING (Cu, Au, Ag, ±Bi, ±Te)

- 1.00% Cu, 0.21 g/t Au and 7.9 g/t Ag over 12.9 m in an arenite/quartzite-hosted quartz stockwork
- Copper mineralization associated with a 650 m-long chargeability anomaly, no drilling yet



SERPENT



GRAB SAMPLE: 2.97% Li<sub>2</sub>O



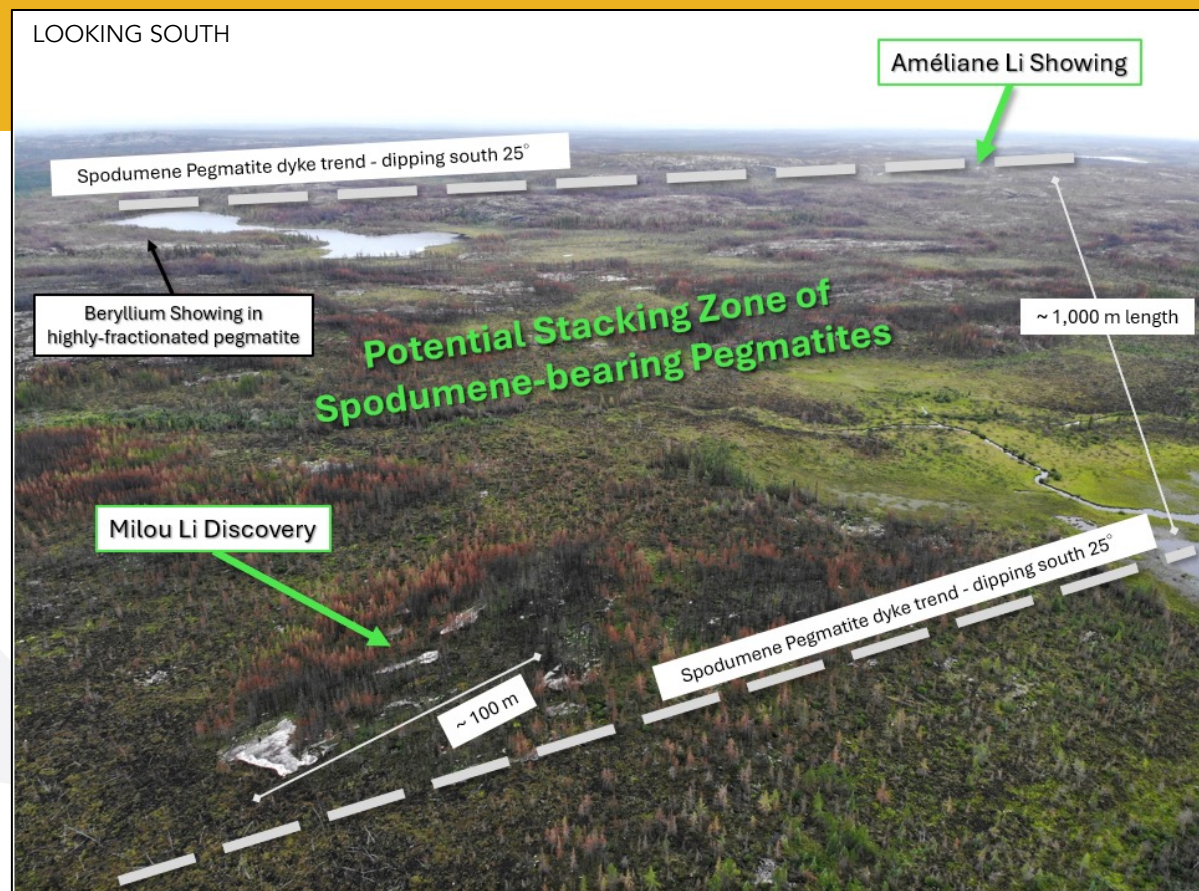
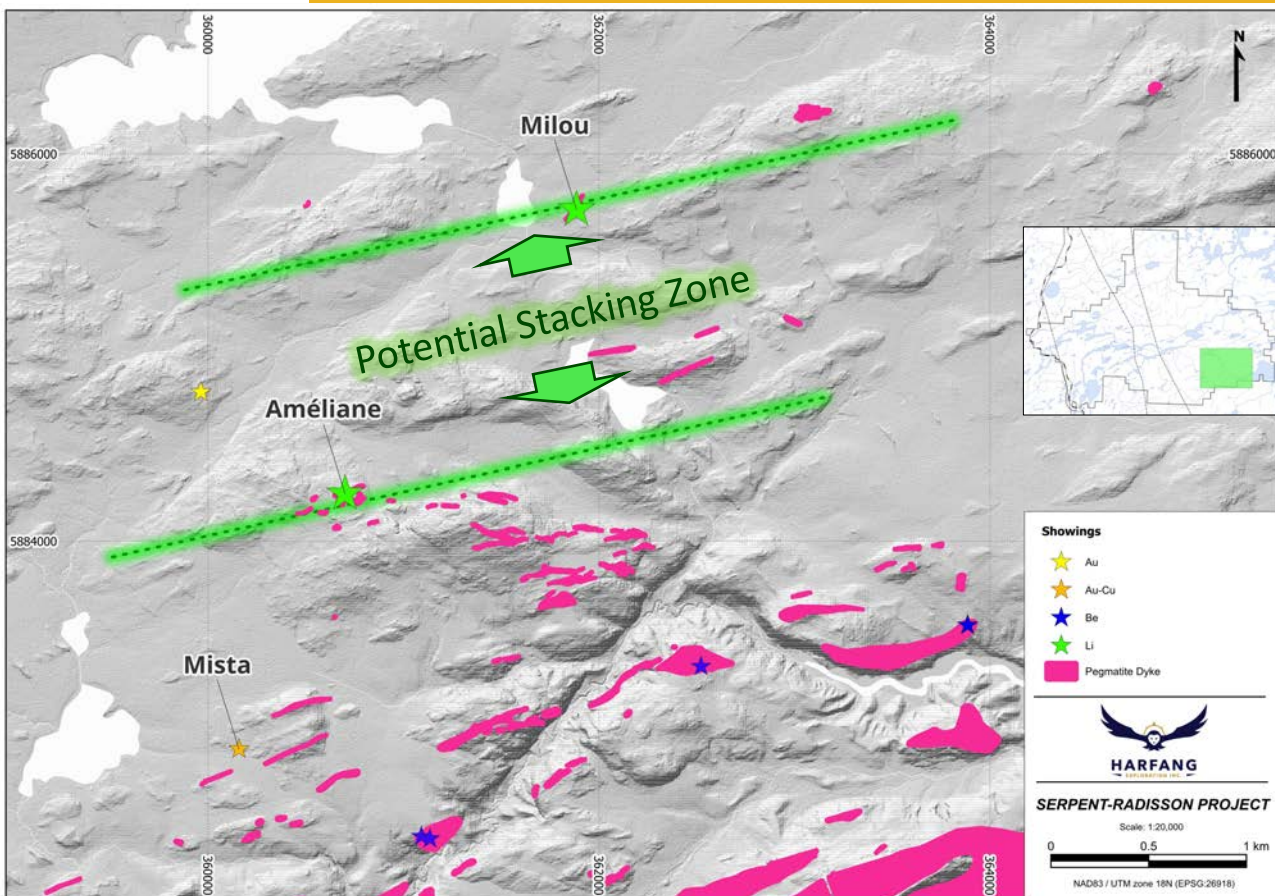
GRAB SAMPLE: 2.17% Li<sub>2</sub>O

TSXV : HAR



# POTENTIAL STACKING ZONE

- Milou could represent northern extension of a large lithium-pegmatite system
- Two pegmatite trends are approx. 1 km apart on surface, indicating the presence of a zone measuring approx. 500 m wide (true thickness) that may host multiple spodumene-bearing pegmatite dykes (a stacked system)
- Potential stacking zone offers encouraging exploration opportunities for hidden lithium mineralization, comparable to the 500-metre-wide corridor at Patriot Battery Metals Inc.'s CV5 Shaakichiuwaanaan (formerly Corvette) deposit



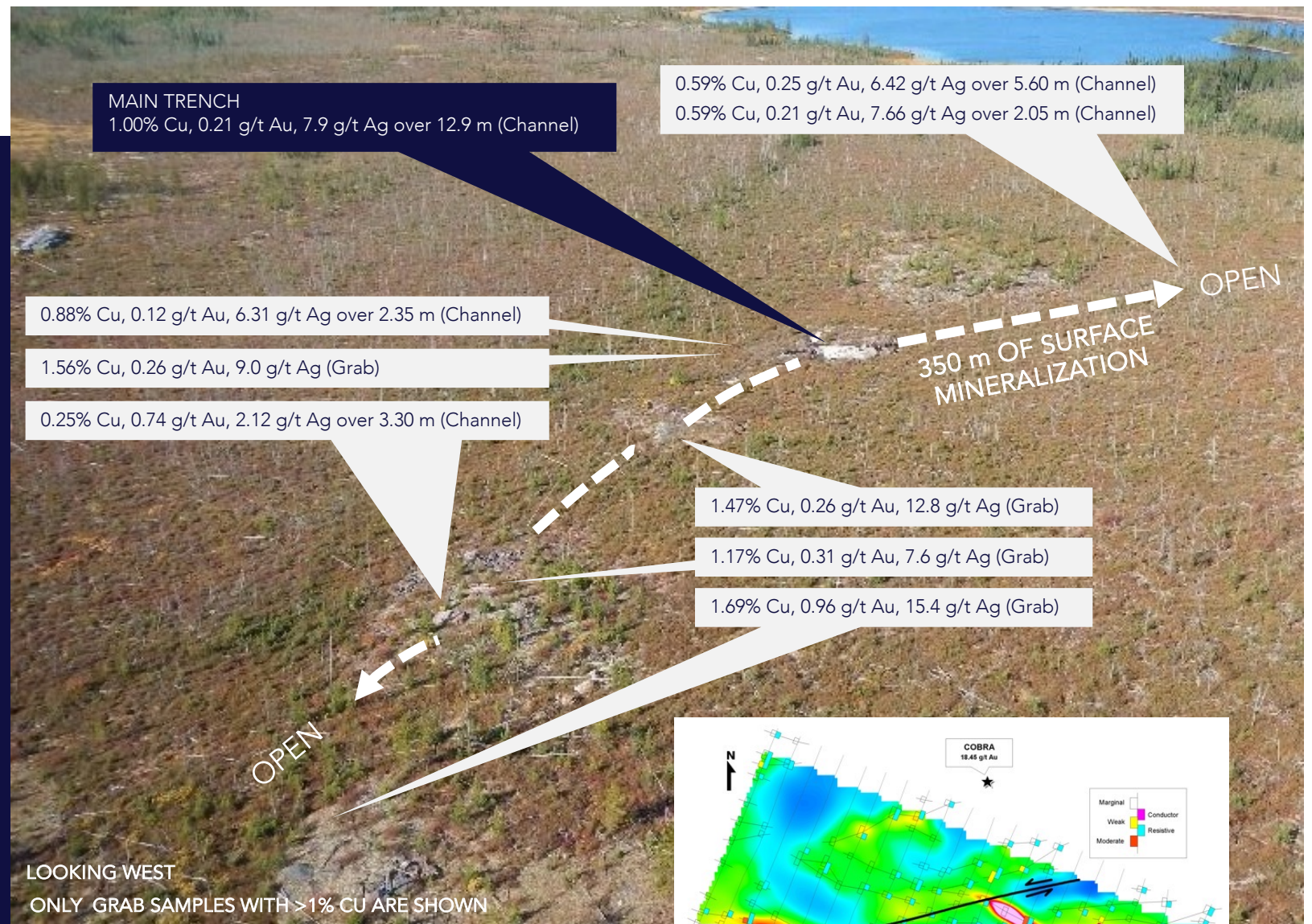
# SERPENT MISTA SHOWING

## DRILL READY TARGETS

- Best channel sample: 1.00 % Cu, 0.21 g/t Au, and 7.9 g/t Ag over 12.9 m

## POLYMETALLIC MINERALIZATION:

- Cu-Au-Ag mineralization identified on surface over 350 m
- Favourable geology: mineralization associated with quartz stockwork hosted in fine-grained quartz arenite and wacke at the contact with tonalitic gneiss of the Langelier Complex
- IP chargeability axis measuring 650+ m



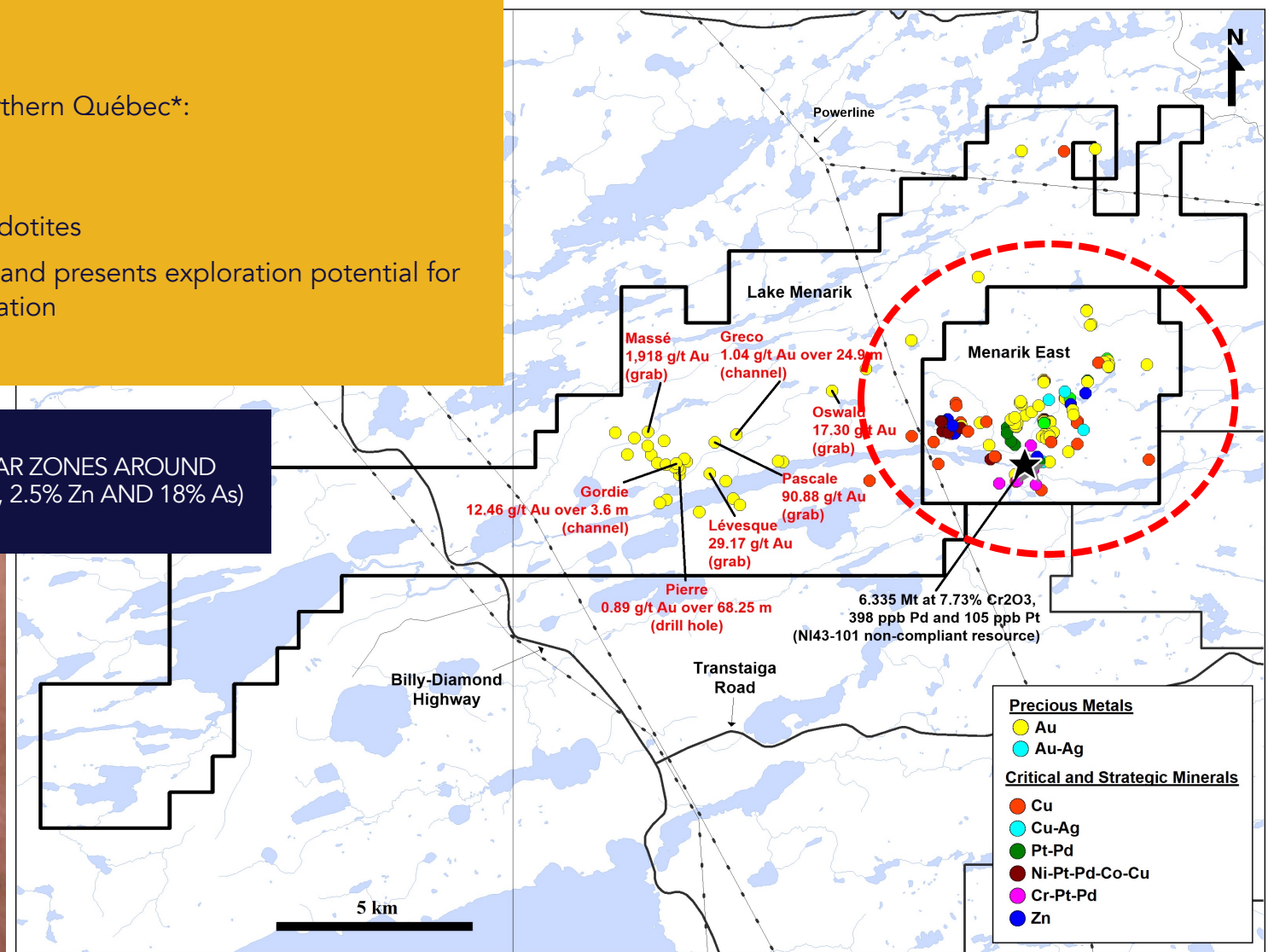
IP CHARGEABILITY AT 65 m DEPTH

# POLYMETALLIC CSMs

## MENARIK IGNEOUS COMPLEX (MIC)

- Ultramafic zone hosts the largest historic chromium resource in northern Québec\*:
  - 6.34 Mt grading 7.73% Cr<sub>2</sub>O<sub>3</sub>, 398 ppb Pd, 105 ppb Pt, and
  - 1.06 Mt grading 0.38% Ni, 0.15% Cu
- Cu-Ni-PGE discoveries made with chromite layers and altered peridotites
- Ultramafic zone of the MIC measures approximately 3 km by 2 km and presents exploration potential for magmatic- and hydrothermal-magmatic-type Cu-Ni-PGE mineralization

TYPICAL ARSENOPYRITE AND GOLD-RICH SAMPLES FROM SHEAR ZONES AROUND THE MENARIK COMPLEX (UP TO 57.6 g/t Au, 858 g/t Ag, 22% Pb, 2.5% Zn AND 18% As)

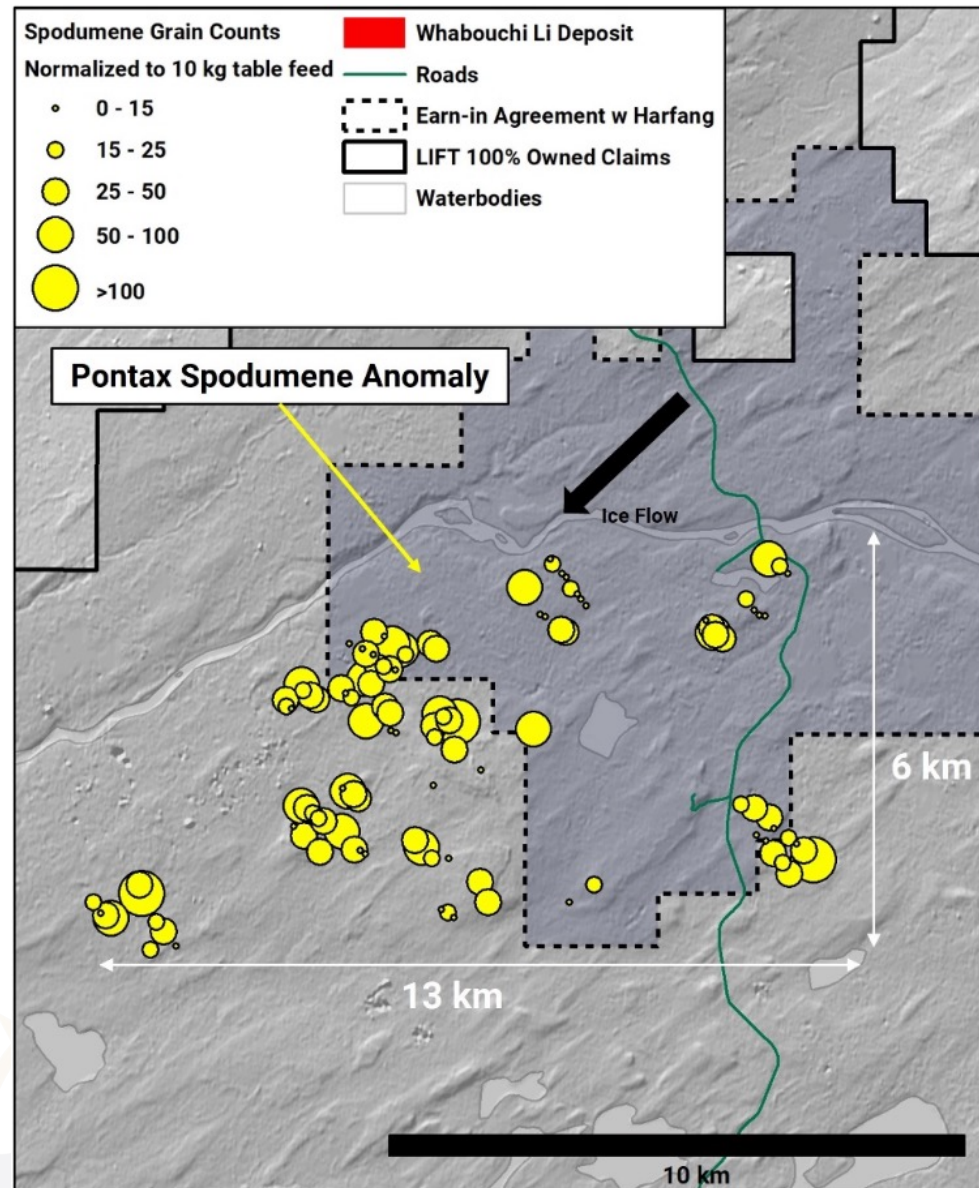


\* THESE ESTIMATES ARE 43-101 NON-COMPLIANT AND ARE THUS TREATED AS HISTORICAL INFORMATION, AND HAVE NOT BEEN VERIFIED BY THE COMPANY. HARFANG IS NOT TREATING THESE HISTORICAL ESTIMATES AS A MINERAL RESOURCE.

# PONTAX

EEYOU ISTCHEE JAMES BAY, QUEBEC, CANADA

- Commodity: Lithium
- Ownership: 100% Harfang; under option to Li-FT Power Ltd.
- Stage: Exploration
- Encumbrances: NIL
- Size: 287 claims totalling 15,323 hectares
- Location & Access: 220 km north of Matagami; 100 km NE of Waskaganish; road access via Billy Diamond HWY



	OPTION PAYMENTS	EXPLO. EXPENDITURES
FIRST OPTION: 51% interest		
On Signing	\$25,000 - PAID	\$1.65M
1 <sup>st</sup> Anniversary	\$25,000 - PAID	before 3 <sup>rd</sup> Anniversary
2 <sup>nd</sup> Anniversary	\$25,000 - PAID	
3 <sup>rd</sup> Anniversary	\$25,000 – July 2025	
SECOND OPTION: 70% interest	\$50,000	\$5.0M
		before 6 <sup>th</sup> Anniversary
OTHER TERMS	Harfang has the option to form a JV or convert remaining 30% interest into a 2.5% NSR	

\* See Harfang news release dated July 21, 2022



TSXV : HAR

## SUMMER 2023 EXPLORATION (by Li-FT)

- Till sampling revealed 13 km by 6 km spodumene anomaly
- Total of 1,654 rock samples collected the returned anomalous grades indicating potential spodumene pegmatite system



**HARFANG**  
EXPLORATION INC.

For further information please contact:

**RICK BREGER, P.Geo.**

President & CEO

[rbreger@harfangexploration.com](mailto:rbreger@harfangexploration.com)

**CORPORATE ADDRESS**

1100, av. des Canadiens-de-Montréal, suite 300,  
Montréal (Québec) H3B 2S2

**TSXV : HAR**